

BUSINESS STRATEGY 2024

MANUFACTURE - ASSEMBLY PROCESS

www.adlissmart.com



BUSINESS STRATEGY 2024 created by Adlis Smart, contains all the basic information about our strategy and investments for "ASSEMBLY PROCESS 2024". If you are interested in receiving complete information, contact:

Assembly-Process@adlissmart.com or Hilik@adlissmart.com

We will send our "Financial Information Mutual Non-Disclosure Agreement (NDA)".

BUSINESS STRATEGY 2024

M A N U F A C T U R E - A S S E M B L Y P R O C E S S

COMPLETE BUSINESS PLAN FINANCIAL FACTORY 2024

To receive the full plan contact: Assembly-Process@adlissmart.com

COMPLET ASSEMBLY PROCESS FACTORY 2024

To Receive Full Assembly Process Contact:
Assembly-Process@adlissmart.com

COMPLET QUALITY CONTROL FACTORY 2024

To Receive Full Control Quality Contact:
QA@adlissmart.com

COMPLET FULL SERVICE FACTORY 2024

To Receive Full Service Factory Contact:
service@adlissmart.com

ADLIS SMART

BUSINESS PRESENTATION



The year 2024 is emerging as a key year for changes in our company.

To keep our company competitive and adapt to market changes, we will explain the plans for 2024 in our presentation.



Innovation and Strategy for manufacture and assembly process

1. Create new factories in 4 specific countries with the necessary **infrastructure for 6 to 15 models each factory.**

Adlis Smart with new Partners/Investors we will develop the 4 factories during 2024.

2. All factories will be created on our **"Manufacture Assembly Process"** plan. We will send the parts of each product separately and each factory will finish the final process.

3. We will create a space for our new **"Smart City Platform AI OpTimazer/NVIDIA."** It will include latest generation computers, Hosting Server, personalized Cloud Data.

For more information and to schedule a meeting contact: Assembly-Process@adlissmart.com

Table Of Contents



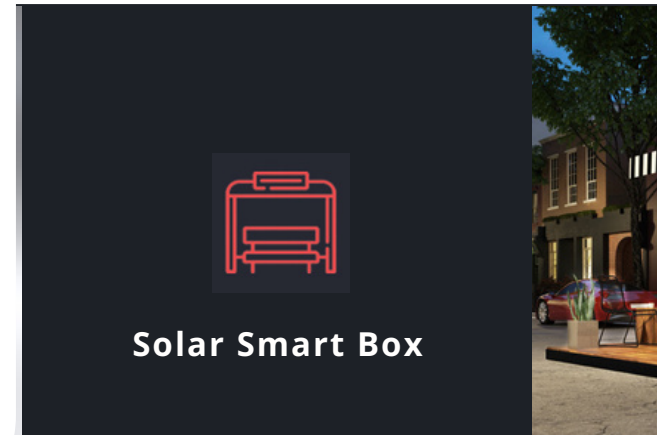
- 01/04** ▶ Introduction
- 06/06** ▶ CEO & Founder
- 07/09** ▶ About Our Company
- 10/10** ▶ How We Work
- 11/17** ▶ Our Products & Categories
- 18/19** ▶ Target & Sales
- 20/27** ▶ Strategy Investor
- 28/37** ▶ Manufacture And Assembly
- 38/47** ▶ New Factory - Assembly Process
- 48/51** ▶ Service New Factory
- 52/53** ▶ Timeline
- 54/55** ▶ CEO & Team
- 56/57** ▶ Portofolio

Aaron Donadey

CEO/Founder

In charge of strategy and meetings with potential Partners/Investors.

Presentation, development, interests and negotiations with investors.



Yehiel "Hilik" Bar

Senior Investment Partner

In charge of strategy and meetings with potential Partners/Investors.

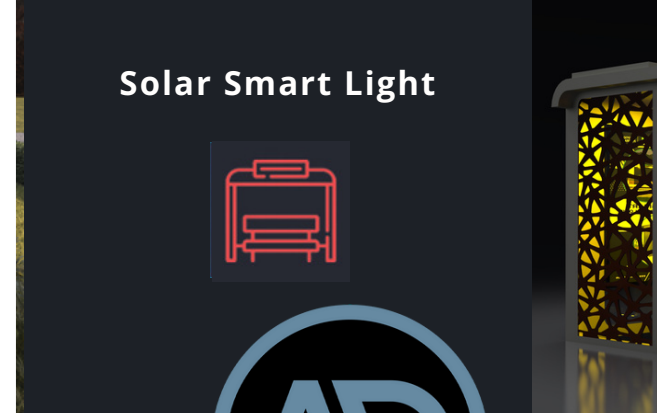
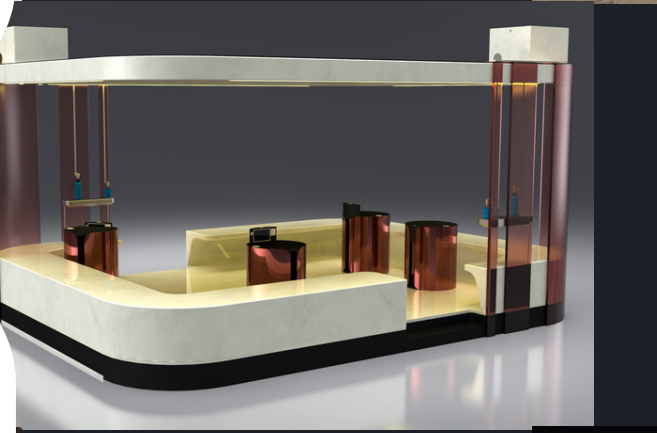
Presentation, development, interests and negotiations with investors.

Jane Wu

Chief Business Development

In charge of all infrastructure and development in our main factory.

From preparing Invoice, production time, certificate, transportation etc.



Doron Asaraf

Project Manager - Factory Assembly Process

In charge of the development and infrastructure of each new factory under construction.

From 3D design, Cad, infrastructure of each part of the factory, workers, quality control, tools, personalized certificates for each country etc.





About Our Company

Adlis/Weiyin and Adlis smart is a global manufacturer specializing in smart city street furniture, we have 16 different product categories, including solar bench, solar table, charging station, bus shelter, trash bins etc. We work with over 65 official distributors all over the world and supply high quality products and services to them. The type of companies we work with include Microsoft, Volvo, Bank of America, AFCON, Governments, Municipalities etc... all through our distributors. Besides official distributors, we also work with normal clients, after signing our NDA, the clients can choose 10 designs of our models, then we will share our detailed price list and data sheet for marketing.

<https://adlissmart.com/FULLCATALOGUE/>

Background Of The Company



2015-2019

Adlis smart is a department of the company VPL-GROUP that was created in 2015 with the objective of developing new technology in 3 branches. We are specialized in manufacturing and developing smart benches, smart table, Smart home and smart Container.



2012

Shenzhen Weiyin Technology Co.,ltd was established in the year of 2012. We are specialized in different kinds of solar smart street furniture, including solar benches, solar charging stations, solar bus shelters and solar trash bins etc. We are the first and leading manufacturer in China in solar smart furniture, and our first solar bench was developed in China in 2015.



2019

In 2019 we merged the 2 companies for Adlis / Weiyin Corporation. With the experience of the 2 companies we create a different way of working, of service, and of giving our distributors what they are always looking for, a customer service totally dedicated to them. We work all over the world with more than 65 official distributors and more normal clients and we get that the old clients of each company are interested and sign with us as Distributors.

<https://adlissmart.com/Catalogue/AdlisWeiyinCompanyProfile2021.pdf>



Innovative and creative growth and partnership agreements

In 2023 we close partnership agreements with 2 leading companies in their sectors.
OpTeamizer/NVIDIA Smart City Platform AI
Solar Smart Street Furniture - Watergen System

NEW CONCEPT

SMART CITY

click here!

INSPIRATION
NEW
CONCEPT

THE SOLAR SMART STREET FURNITURE - WATERGEN SYSTEM



ADLIS SMART CITY INTEGRATED MANAGEMENT SYSTEM



NEXT GEN OF ADLIS INTEGRATED SYSTEM POWERED BY NVIDIA JETSON
INTELLIGENT SOLUTIONS - AI



www.adlissmart.com

**I Believe This Step
Will Make a
Difference In Our
Business**



How We Work

01

Official Distributor

Official Distributor: Without exclusivity for the entire duration of the contract (24 months).

For official distributors, special services, and special requirement (Special Contract 2 Years)

02

Normal Client

The client who wants to promote our products, sign the NDA and the commercial agreements. Choose 10-15 products from our catalog that he can promote.

Normal customer with sale of our products at FOB Prices with some advantages in representing our products.

03

Compleet Service

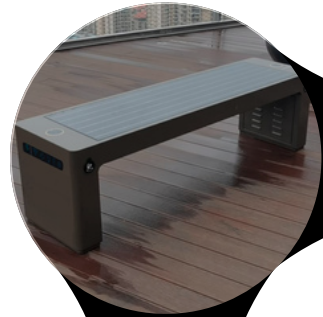
Special service for clients and companies that do not go through our distributors. They buyour products directly from our company.

We offer Complete service: Manufacturing, CIF shipments, receiving the cargo at the customer's location, installation, configuration and total warranty with maintenance service.

Link: <https://adlissmart.com/Catalogue/ADLISWEIYINCONCEPTANDHOWWEWORK.pdf>

Our Products and Categories

Smart Bench



Smart Trash



Smart Bus Shelter



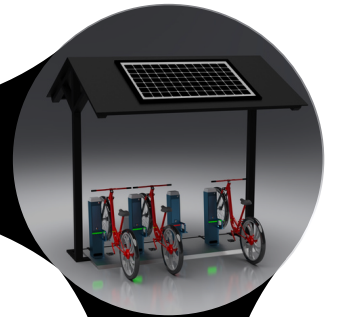
Smart Charger



Smart Light



Smart Bike Charger



Smart Table



Special Products



Smart Advertising



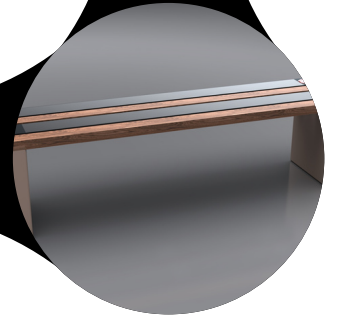
Smart Beach



Smart Box



Build Your Bench



All the Categories

Adlis/Weiyin Corp. (Adlis Smart) manufactures more than 350 different products divided into 16 categories.

12 categories are products manufactured in large quantities and in our catalogs.

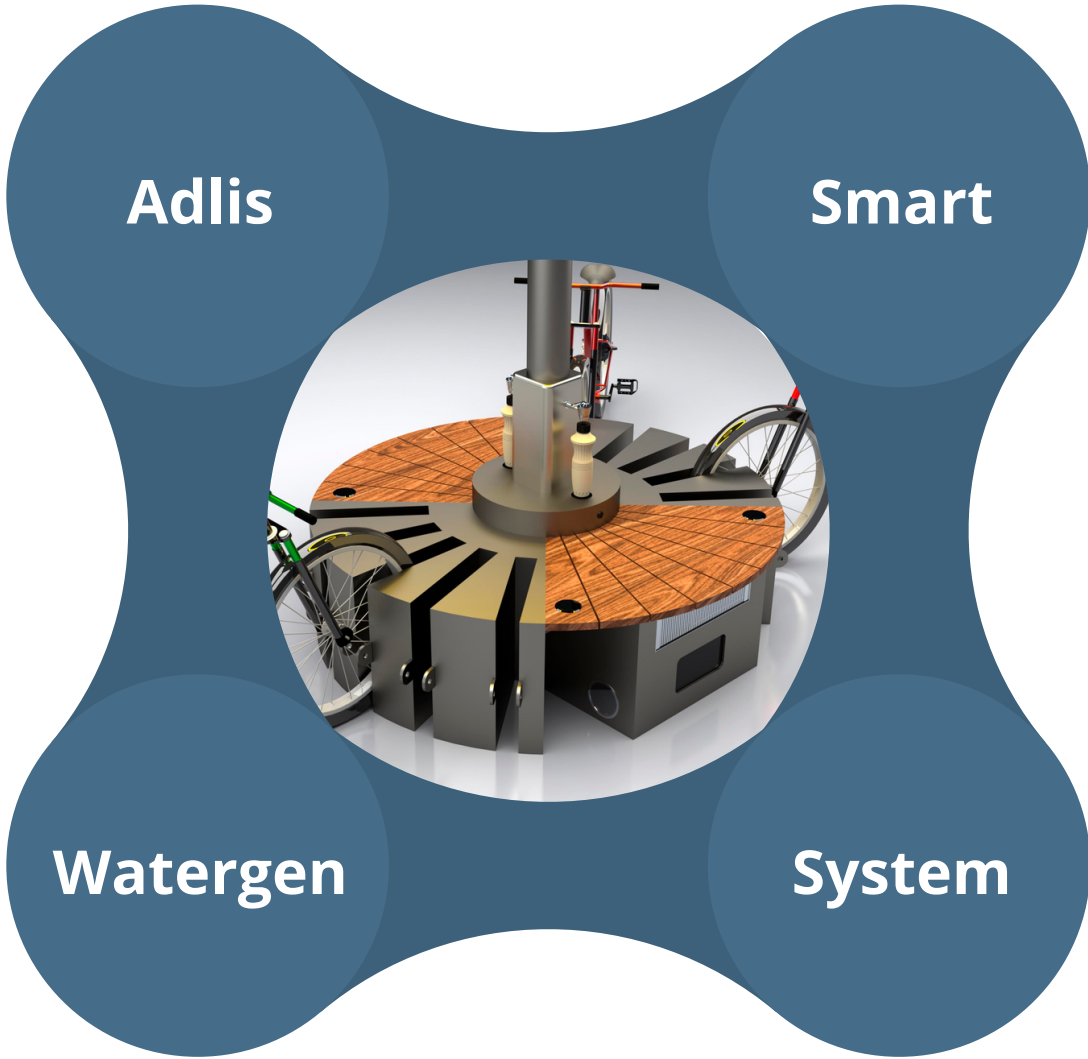
4 categories are focused on Prototypes and designs created by our distributors.

We create a new category for 2024 with **Watergen Company**: Solar Smart Street Furniture - Watergen System

Together with **OpTeamizer/NVIDIA**, we created a new AI platform focused on Street Furniture, the first on the market focused on controlling all

Solar Smart Street Furniture products with Artificial Intelligence.

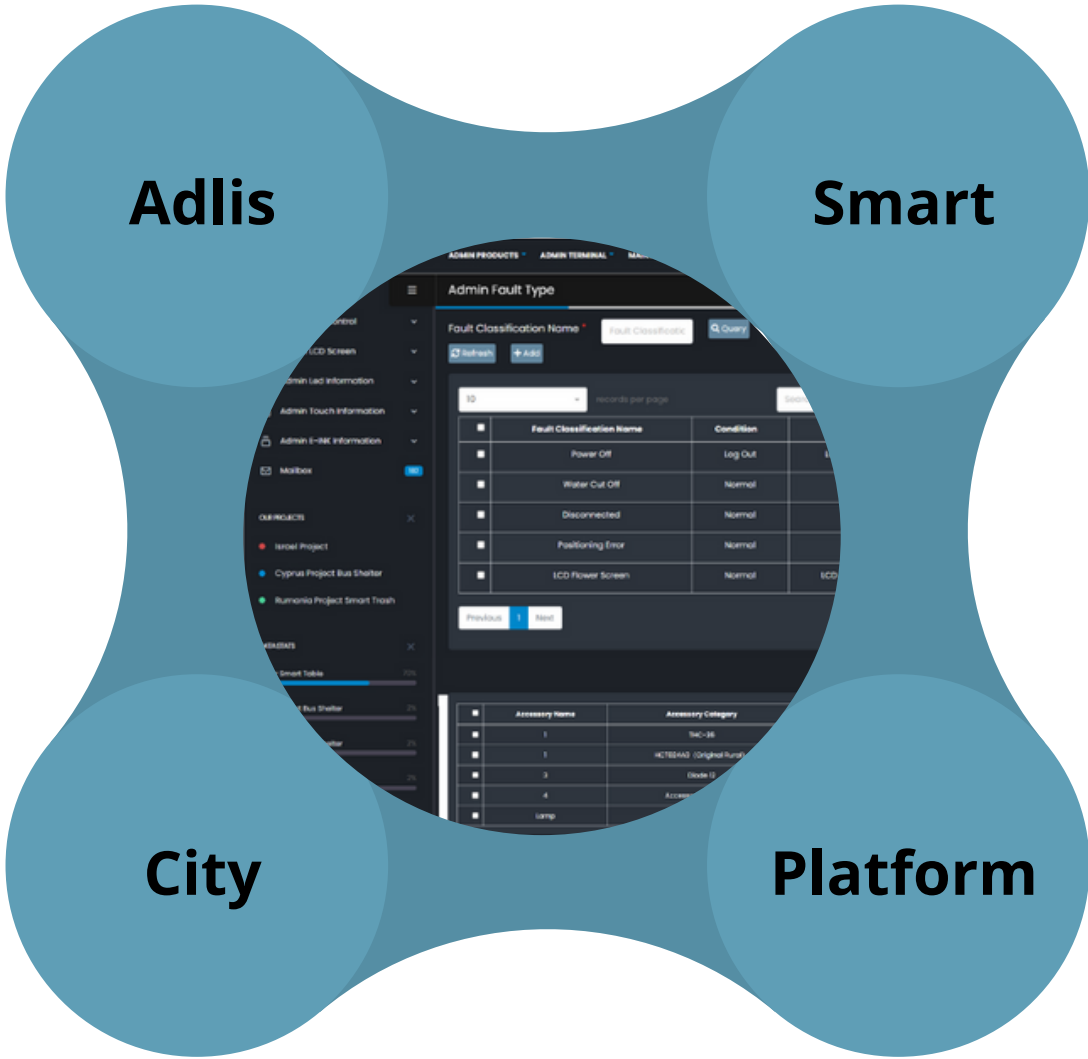
Our New Products - 2024



<https://adlissmart.com/Watergen/>



<https://adlissmart.com/SMARTCITY/>



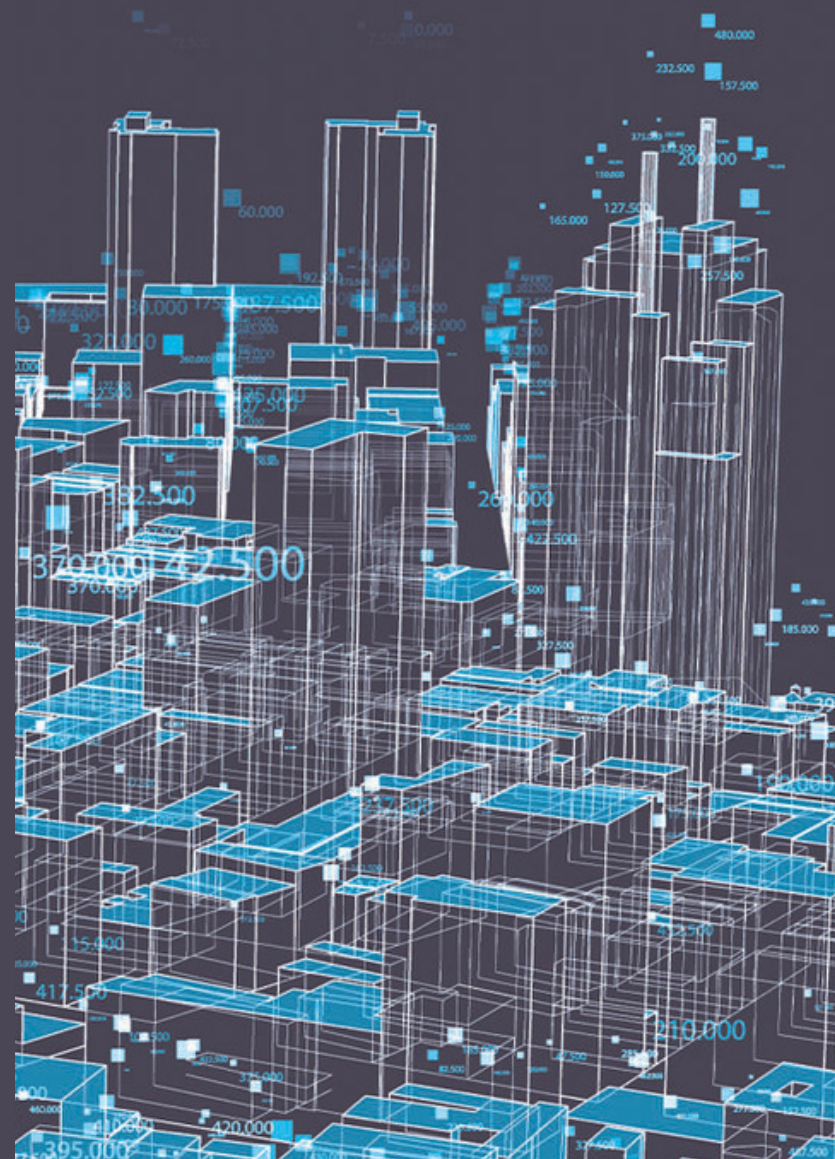
New Categories

We create a new category for 2024 with **Watergen Company**: Solar Smart Street Furniture - Watergen System Together with **OpTeamizer/NVIDIA**, we created a new AI platform focused on Street Furniture, the first on the market focused on controlling all Solar Smart Street Furniture products with Artificial Intelligence.

HOW DOES THE PLATFORM WORK?



BIG DATA
ADVANCED ANALYTICS
AND VISUALIZATION



Smart City AI Platform

1. Transmission of information and data

We create link for the client, we make the configuration for the client.

The customer switches and controls all smart products from the platform.

With the NVIDIA AI Jetson Box installed in each of our products, all components are controlled and data is saved.

ADLIS CLOUD PLATFORM

ADLIS HOSTING SERVER

ADLIS SMART DATA

BIG DATA
ADVANCED ANALYTICS
AND VISUALIZATION

Link Catalogue: <https://adlissmart.com/SMARTCITY/>



2. Use of information to manage all smart components

We deliver our platform for city management or clients that allows:

Visualize and analyze the sensors and smart components in real time and dynamically.

Access multiple reports that allow defining and analyzing each smart components.

Define and manage alarms to each sensor. Manage in real time the map of each product in the city.

We offer 3 options to choose from:

- **Basic Platform**
- **Premium Platform**
- **Full Platform**

INSPIRATION
NEW
CONCEPT



Adlis Watergen Products

Adlis Smart and Watergen decided to work together to create that new inspiration, such as the revolutionary technology that Watergen develops to generate clean and fresh drinking water in an efficient and sustainable way.

Like the Solar Smart City products developed and manufactured by Adlis Smart, and changing the future for Urban Furniture.

We thank Watergen and their entire team for supporting Adlis Smart from the beginning and being able to create a New Concept together: The Solar Smart Street Furniture - Watergen System

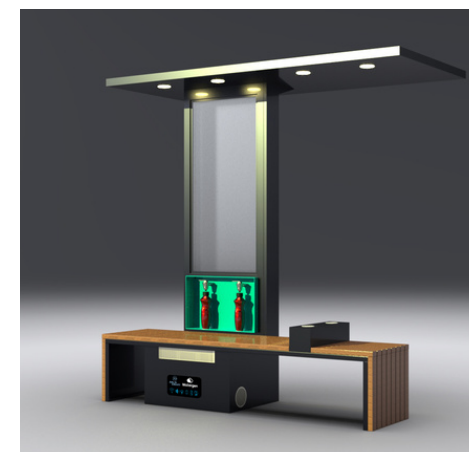
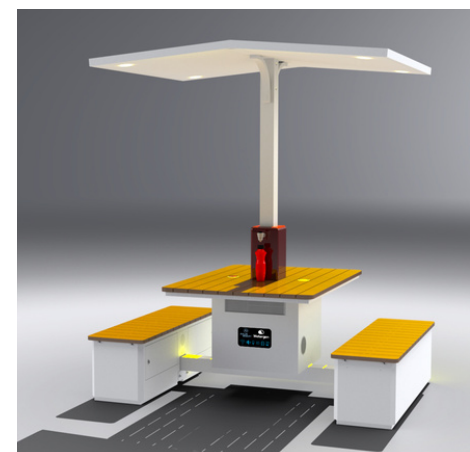


Creating Drinking Water from Air

Watergen's patented technology creates high quality drinking water out of air for people everywhere



Link Catalogue: <https://adlissmart.com/Watergen/>



Adlis Smart Video Presentation



ADLIS SMART
Watergen

OPTIMIZER
NEXT GEN OF ADLIS INTEGRATED SYSTEM POWERED BY NVIDIA JETSON

NVIDIA
INCEPTION PROGRAM

ADLIS WEIYIN
Official Manufacturer

UrbanTech
thesolarrange
INTELLIGENT SMART LIGHTING

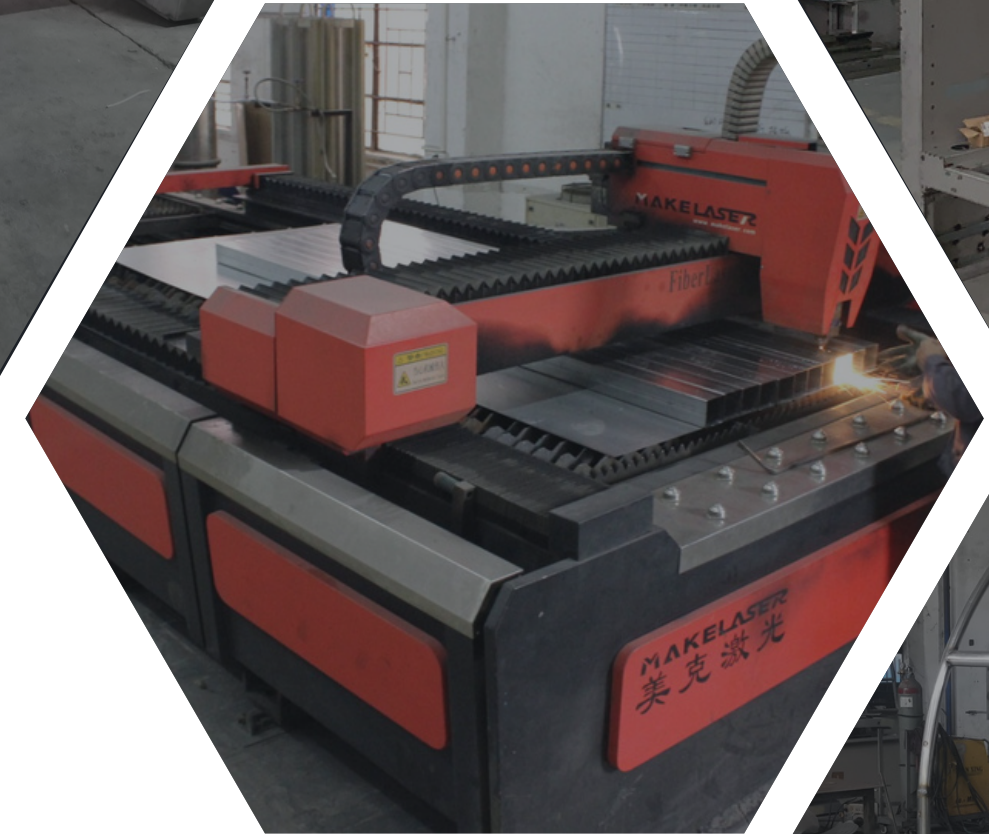
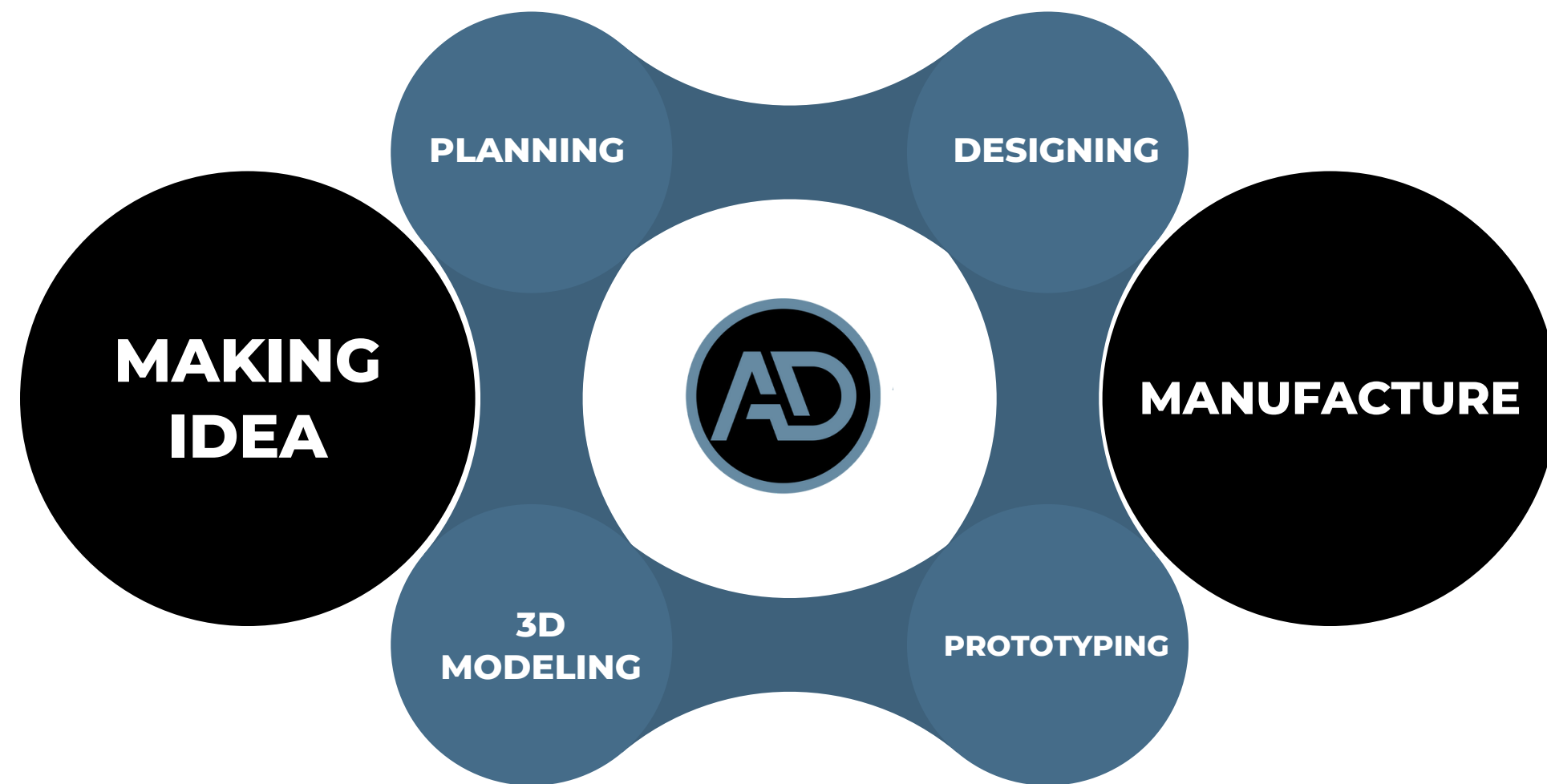
future Urbanism
GITEX GLOBAL
CO-LOCATED WITH
THE LARGEST TECH SHOW IN THE WORLD WHERE REAL GLOBAL BUSINESS IS DONE

www.adlissmart.com
www.opteamizer.co.il
www.watergen.com

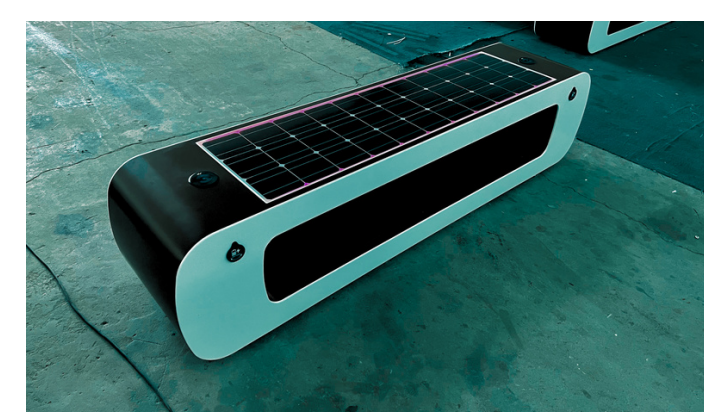
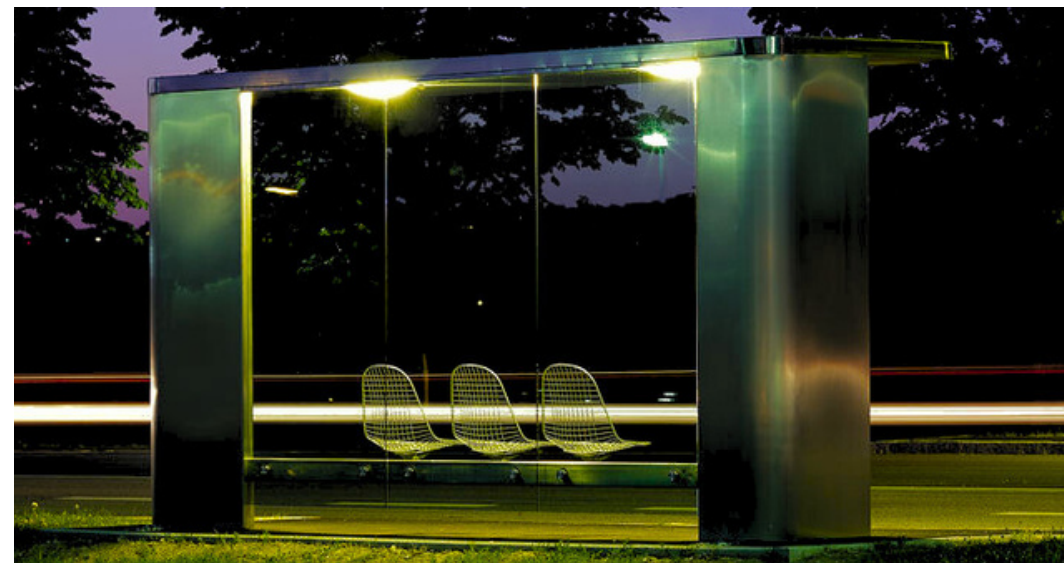
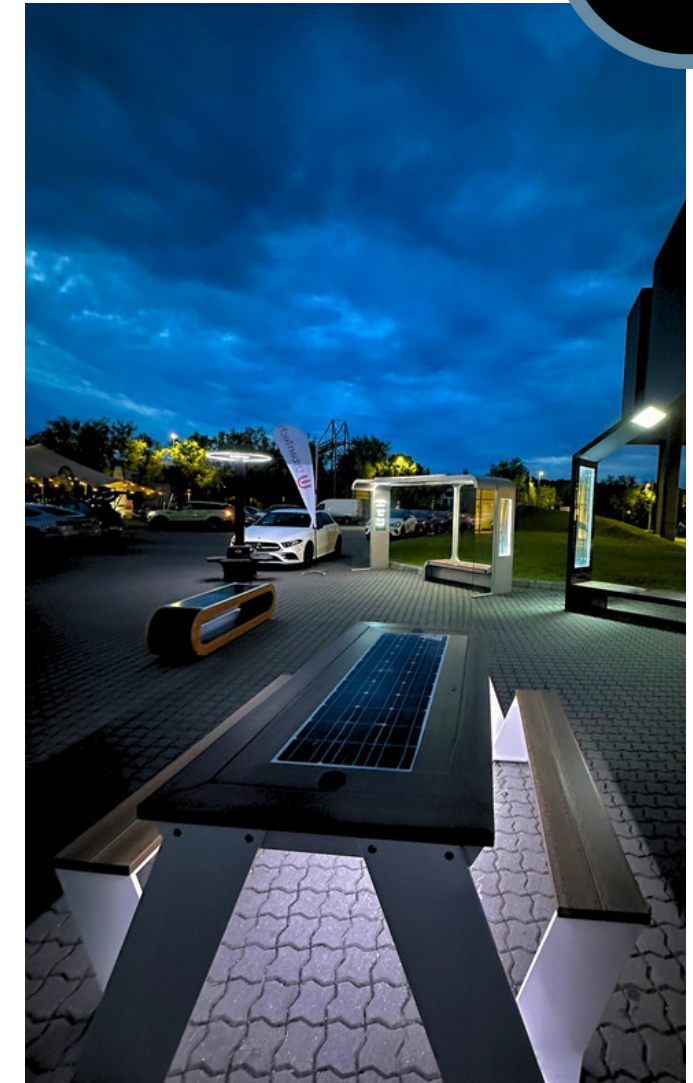
<https://adlissmart.com/VIDEO PRESENTATION>

Our Works

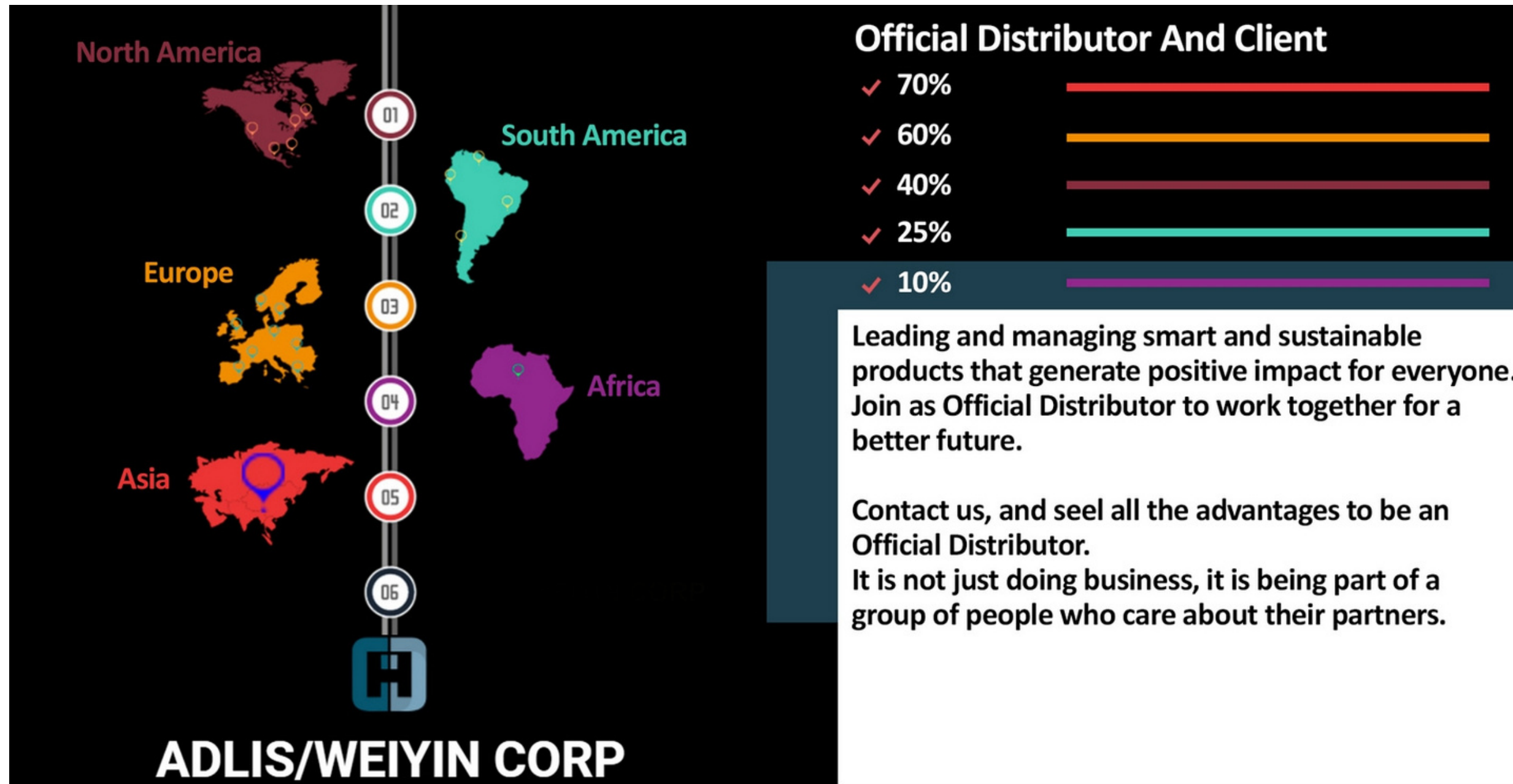
Leading and managing Solar Smart sustainable products that generate a positive impact for everyone. Join as Official Distributor to work together for a better future.



Some Models



Target Market



Adlis/Weiyin Corp. has 65 Official Distributors worldwide and twice as many customers. Our expectations for 2024 are to sign about 10 to 15 more distributors and invest in 4 new factories in 4 important countries for us.

Sales 2022-2023

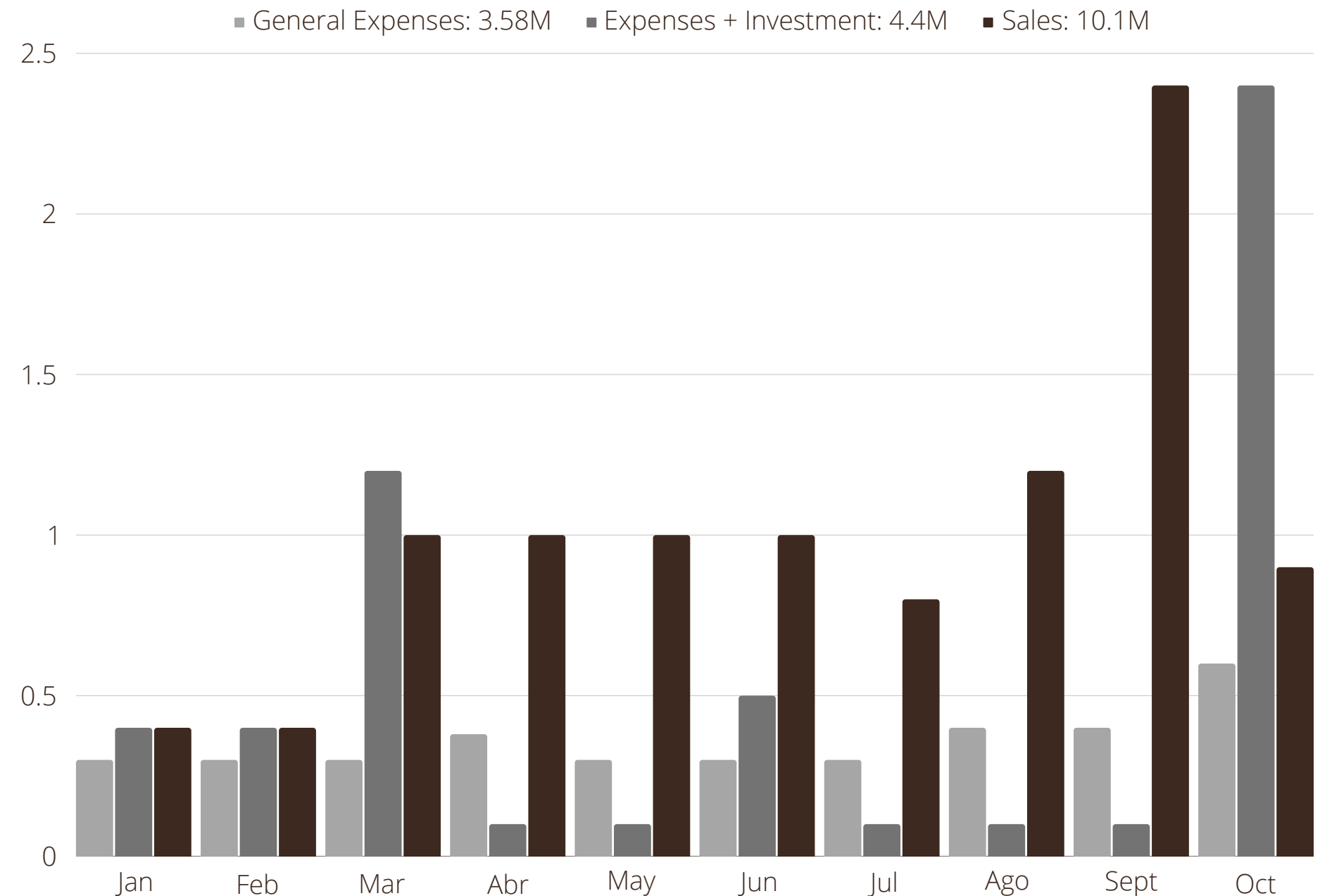


During the 2022-2023 year we have signed with 15 new Official distributors in different European countries, Asia and the USA. We had a sale of 8,300,000 USD worldwide and 1,800,000 USD in China.

It represents a growth of 200% since Adlis Smart invested in the factory in Shenzhen in 2019 and created Adlis/Weiyin Corporation. Our factory went from having 3000SQM in 2019 to having 20000SQM in 2023.

For 2023 until October we have expenses and investment of 7.98M-USD and sales of 10.1M-USD - 21%.

We estimate by the end of the year with the extra expenses of the EXPO in Dubai and other investments made, a net profit of 16-17%. But significant growth during and after the Dubai EXPO with signed agreements, contracts with new clients, partnerships, traders and new distributors.





INVESTOR STRATEGY - 2024

MANUFACTURE - ASSEMBLY PROCESS

To receive our Complete Business Plan/Financial for Investors contact:

Assembly-Process@adlissmart.com or Hilik@adlissmart.com

www.adlissmart.com

The word 'INVESTORS' is written in large, white, bold, sans-serif capital letters. It is overlaid on a dark, semi-transparent hexagonal shape that has a horizontal motion blur effect. The background of the entire graphic is a collage of images: hands stacking wooden blocks, hands holding a stack of papers, and hands on a yellow surface with blocks.



Our Vision 2024 (Strategy)



01

Manufacture our products in 4 different countries. Local manufacturing and personalized certificates in each country include "MADE IN". Local sales and distribution and also to other nearby countries.

02

New personalized designs based on the style and culture of each country. The new designs will be manufactured first in our main factory and then the Assembly Process will be developed in each new factory.

Our Mission 2024 (Strategy)



01

Create and implement 4 factories in different countries with the capacity of 4 to 16 models in each of the factories.
Develop a personalized sales and marketing plan for each factory.

02

Make the 4 factories leaders in development and sales in each country.
Hire a local company dedicated to developing a marketing campaign to achieve our goal.





Vision - Mission - Values

The year 2024 is shaping up to be a key year for the business world, marked by changes in the international market.

Many countries are investing to develop plans for local manufacturing. Companies that want to remain competitive and adapt to market changes must design and implement a business strategy that allows them to take advantage of opportunities and face the challenges that arise.

Adlis SMart has prepared a specific strategy for 2 years, its plan is to invest in creating 4 factories together with investors who share our business strategy.



To receive information on our investment plan: Assembly-Process@adlissmart.com or Hilik@adlissmart.com

Link Catalogue: <https://adlissmart.com/FULLCATALOGUE/>

Strategy Investor - Factory



Our strategy for investment and investors is based on 2 parts (**Adlis Smart Investment - Investor Partners**):

- **Adlis Smart Investment:** Our Investment is based on the infrastructure of our main factory, our products for the Showroom, classified personnel to develop and create the factories, Architect CAD design/plans and 3D designs (Virtual Reality included), and much more.
- **Partners/Investors:** We contact investors that we know and trust us, in addition to having more potential investors in our database.
- At the GITEX EXPO in Dubai, many investment companies and investors came to visit us with interest in our products.
- We close agreements and contracts with companies that are dedicated to obtaining investors.

To receive our Complete Business Plan/Financial for Investors contact: Assembly-Process@adlissmart.com or Hilik@adlissmart.com

EXECUTIVE SUMMARY - ACTIVITY SECTOR - MARKETING - STRATEGY AND IMPLEMENTATION - FINANCIAL PLAN - CONFIDENTIALITY

Business Investor Capital

Investment and strategy Factory 2024
Shared Investment Partnership
Development and Implementation
Investment options
Financial Investment
Adlis Smart Investment

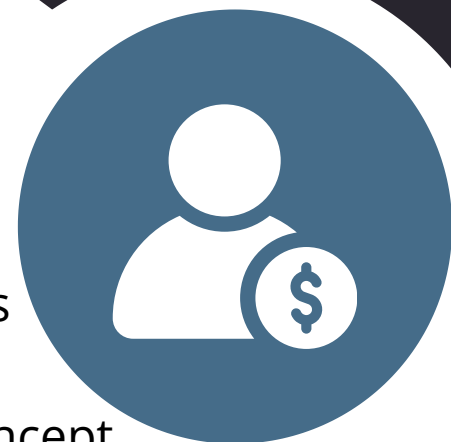
What We Offer - Opportunities -
Investment risks and opportunities Factory 2024



Option 1: 4 to 6 models
Manufacturing with our
"Assembly Process" concept
Total Investment: 000,000,000 USD



Option 2: 6 to 8 models
Manufacturing with our
"Assembly Process" concept
Total Investment: 000,000,000 USD



Option 3: 8 to 12 models
Manufacturing with our
"Assembly Process" concept
Total Investment: 000,000,000 USD



Option 4: 12 to 16 models
Manufacturing with our
"Assembly Process" concept
Total Investment: 000,000,000 USD

To receive our Complete Business Plan/Financial for Investors contact: Assembly-Process@adlissmart.com or Hilik@adlissmart.com

EXECUTIVE SUMMARY - ACTIVITY SECTOR - MARKETING - STRATEGY AND IMPLEMENTATION - FINANCIAL PLAN - CONFIDENTIALITY

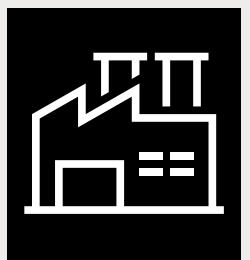


Investment Solution In Market Development Strategy



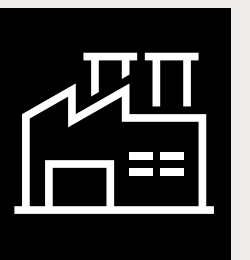
Investor and Investment 2024

- Investment and strategy Factory 2024
- Shared Investment Partnership
- Development and Implementation
- Investment options
- Financial Investment
- Adlis Smart Investment



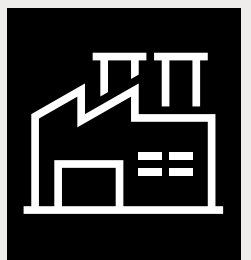
Factory and Assembly Process in UAE, Bahrein and Saudi

Invest and create together with distributors to manufacture 4 to 16 of our products in this area.



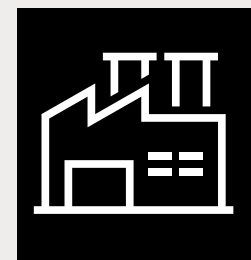
Factory in Rumania with our Distributor

Invest and create together with our distributor to manufacture 6 products.



Factory in USA with our Distributor

Invest and create together with our distributor to manufacture 10 products.



Factory in Ukraine (In negotiation)

Invest and create an Adlis Smart factory for 10 to 16 of our products in this area.

To receive our Complete Business Plan/Financial for Investors contact: Assembly-Process@adlissmart.com or Hilik@adlissmart.com

EXECUTIVE SUMMARY - ACTIVITY SECTOR - MARKETING - STRATEGY AND IMPLEMENTATION - FINANCIAL PLAN - CONFIDENTIALITY

Investment Solution



01

OPTION 1

4 to 6 models

Manufacturing "**Assembly Process**" concept

Space: 400 to 800Sqm Assembly Process + 1000Sqm outdoor open space.

Showroom: 15 different model.

Space: Cloud Data + Smart AI Platform.

Office: Management + Production + Control Quality.

Total Investment: 000,000,000 USD

02

OPTION 2

6 to 8 models

Manufacturing "**Assembly Process**" concept

Space: 500 to 1000Sqm Assembly Process + 1000Sqm outdoor open space.

Showroom: 20 different model.

Space: Cloud Data + Smart AI Platform.

Office: Management + Production + Control Quality.

Total Investment: 000,000,000 USD

03

OPTION 3

8 to 12 models

Manufacturing "**Assembly Process**" concept

Space: 800 to 1200Sqm Assembly Process + 1200Sqm outdoor open space.

Showroom: 25 different model.

Space: Cloud Data + Smart AI Platform.

Office: Management + Production + Control Quality.

Total Investment: 000,000,000 USD

04

OPTION 4

12 to 16 models

Manufacturing "**Assembly Process**" concept

Space: 1000 to 1500Sqm Assembly Process + 1500Sqm outdoor open space.

Showroom: 30 different model.

Space: Cloud Data + Smart AI Platform.

Office: Management + Production + Control Quality.

Total Investment: 000,000,000 USD

To receive our Complete Business Plan/Financial for Investors contact: Assembly-Process@adlissmart.com or Hilik@adlissmart.com

EXECUTIVE SUMMARY - ACTIVITY SECTOR - MARKETING - STRATEGY AND IMPLEMENTATION - FINANCIAL PLAN - CONFIDENTIALITY

OUR FACTORY: Process Manufacture And Assembly



Artwork

All the necessary documents for the new factories. 3D/AR/VR designs, Artwork for manufacturing and assembly, technical data, configuration, installation.

Testing Report

The testing reports established in all our production "after quality control" will be maintained for the "Assembly Process" of each new factory.

Technical/AI Platform Dept.

Our technical department and AI Platform will be in charge and will form the technical team of the new factories. Same with the AI Platform space.

Manufacture

The main factory will manufacture the models as an "Assembly Process" strategy. The components will be sent separately for assembly in the new factories.

Packages

Package all products with special protection and put in 10mm Plywood boxes with reinforcement around.

Architect/Ingeniero Dept.

They are in charge of all the Artwork of our products and prepare specific projects for our clients. They prepare all the plans, 3D/AR/VR of the new factories.

Control Quality

The quality control established in each production "5 days quality control 5 days/24 hours" will be maintained for the "Assembly Process" of each new factory.

Shipment

Loading of products from the port of Shenzhen or Hong Kong to the destination of our new factories.

Design Dept.

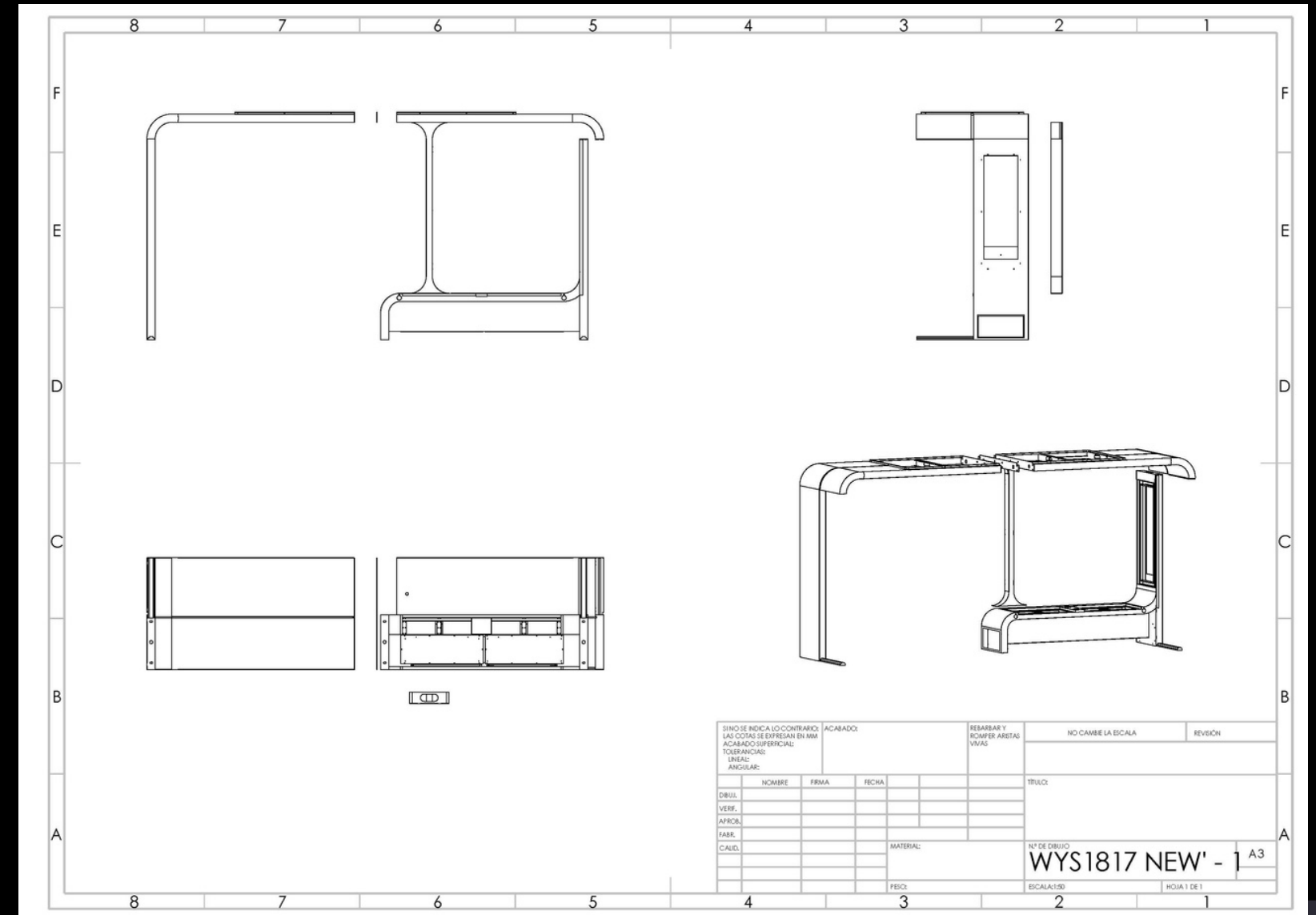
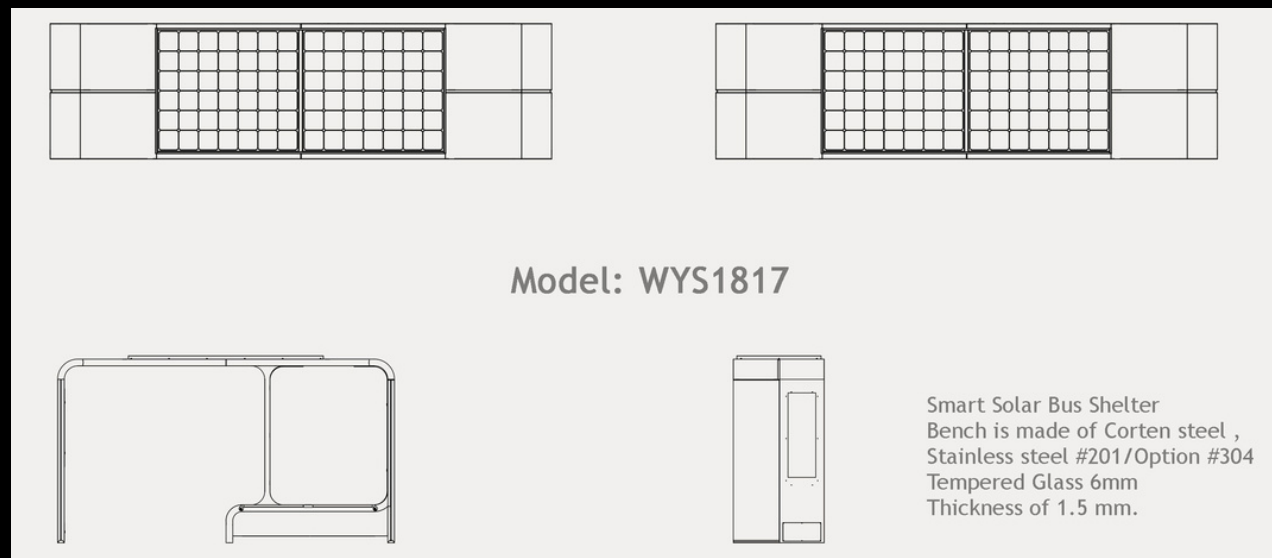
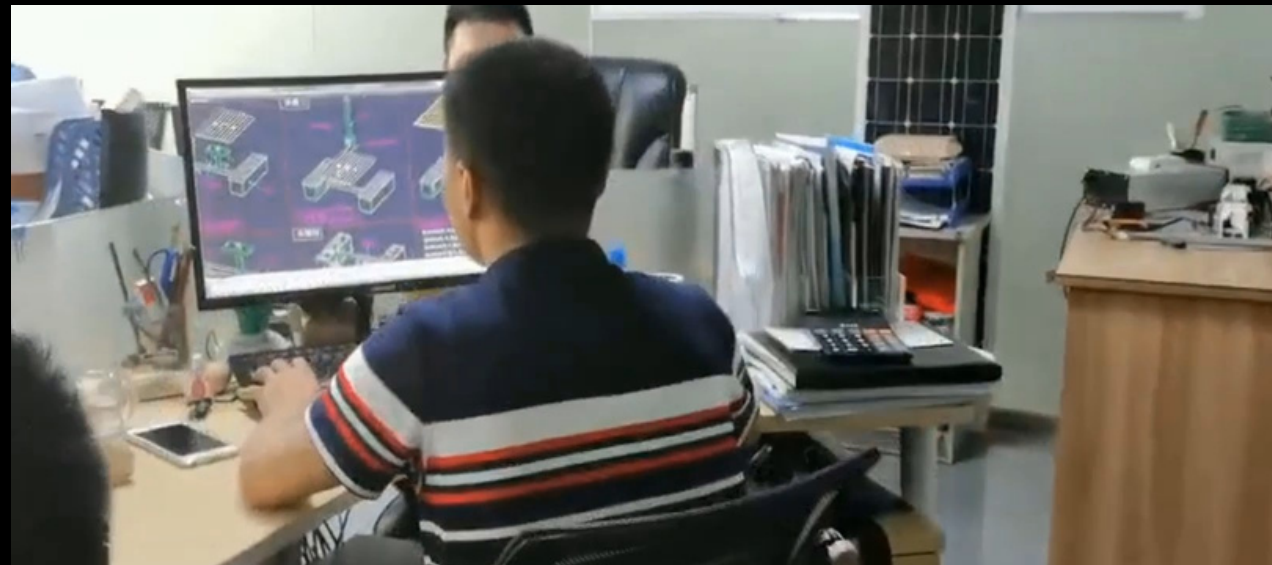
Our department is in charge of all marketing designs, catalogs, data, etc... Our department will prepare everything necessary for the new factories.

Manufacture Principal Factory

01

Artwork

Our main factory will deal with all 3D/AR/VR designs, Artwork for manufacturing and assembly, technical data, configuration, installation. Each file will be prepared with the language and image of each factory, in addition we will prepare the technical office of each new factory with all the necessary software and cloud service to save and share files.



Manufacture Principal Factory

02

Manufacture

Our main factory will manufacture the models based on our "Assembly Process" strategy. Each manufactured component will be sent separately for assembly in the new factories. It will be painted in the new factory and will be prepared so that the painting process can be done quickly. "See Assembly Process List"



PROCESSING AND MATERIAL LIST	YES= The distributor does
ASSEMBLY PROCESS	NO= Adlis/Weiyin does
PROCESSING	WHERE TO HANDLE
Cutting	Adlis/Weiyin
Bending	Adlis/Weiyin
Welding	Adlis/Weiyin
Polishing	Adlis/Weiyin
Dust scraping before and after oil painting protection	Adlis/Weiyin
Option 1: Premier stainless steel protection: one thin layer of oil painting in light gray color, after cannot be put into oven and can only be oil painted	PUT YES OR NO
Option 2: Premier stainless steel protection: one thin layer of powder coating in light gray color, after can either be oil painted or power coated	PUT YES OR NO
Wood cutting (Option Woodless Model)	Adlis/Weiyin
Packing in foams and plywood box	Adlis/Weiyin
Second painting	PUT YES OR NO
Cutting and assembly the wires	PUT YES OR NO
Assembly the solar panel	PUT YES OR NO
Assembly the electronic components	PUT YES OR NO
Material	WHERE TO HANDLE
Stainless steel #201 #304 #316	Adlis/Weiyin
WPC WOOD (separate before delivery)	PUT YES OR NO
Glass (separate before delivery)	Adlis/Weiyin
Screws and anchors and rubber strip for light box	PUT YES OR NO
Silicone sealant,tools like wrench and screw driver	
Electronic components (All separate before delivery)	WHERE TO HANDLE
Solar panels	Adlis/Weiyin
MPPT controller	PUT YES OR NO

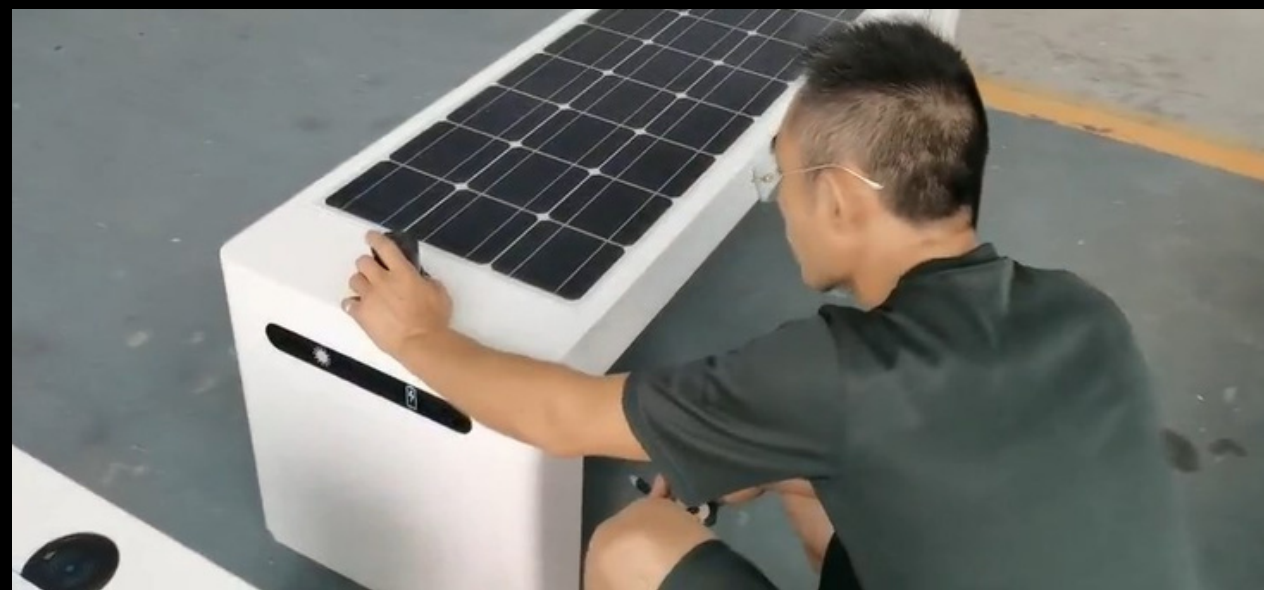
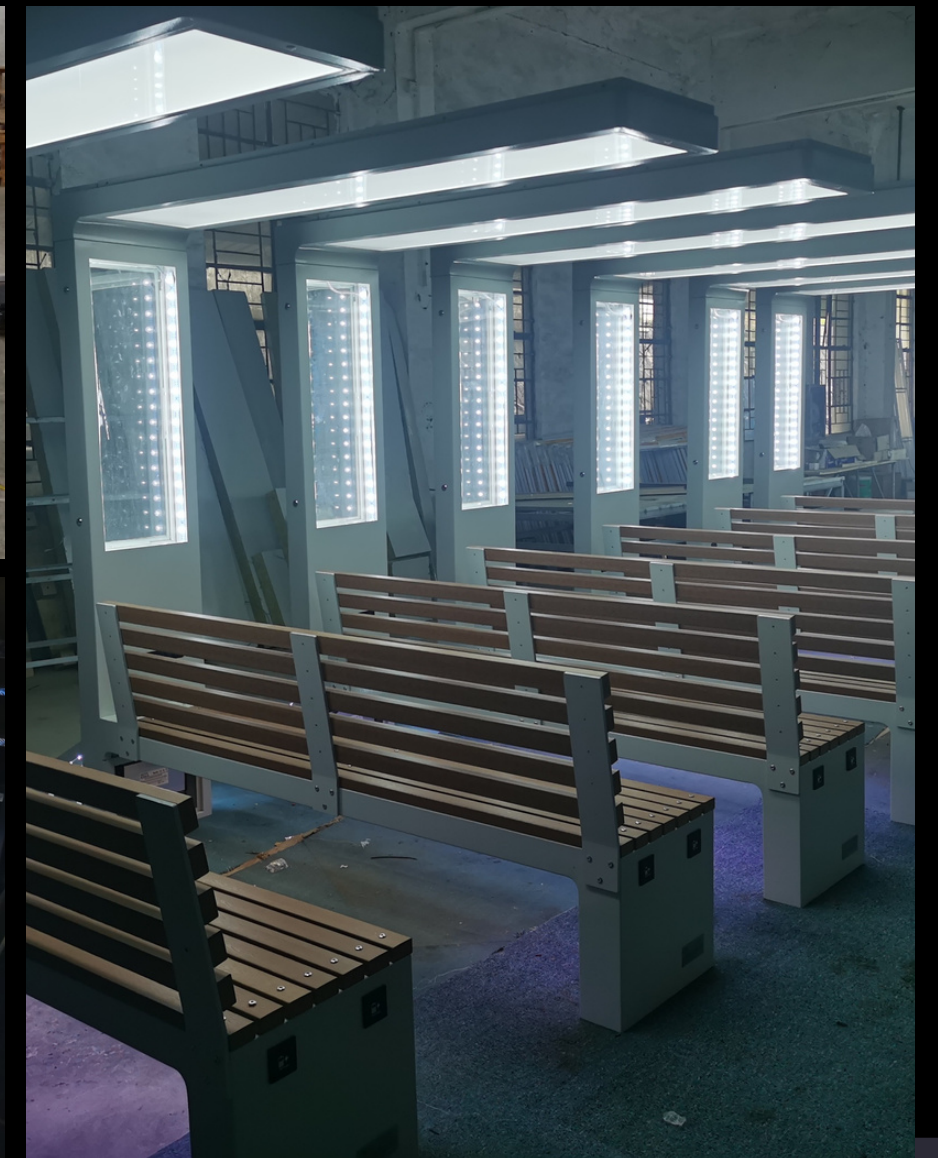
Smart motherboard	PUT YES OR NO
USB and wireless chargers	PUT YES OR NO
LED pendal light	Adlis/Weiyin
LED diffuse light	Adlis/Weiyin
One roll of electric wires	PUT YES OR NO
PIR motion sensor	PUT YES OR NO
Optical sensor switch	PUT YES OR NO
bluetooth & speaker	PUT YES OR NO
WiFi router	PUT YES OR NO
Battery	Adlis/Weiyin
E-ink	PUT YES OR NO
Led Screen	Adlis/Weiyin
Advertising Display	Adlis/Weiyin
Smart Camera	PUT YES OR NO
All Sensors - CO2, Waterproof, Humidity and more	PUT YES OR NO
Smart Voice	Adlis/Weiyin
Advertising Display	PUT YES OR NO
Smart Digital Kiosk	Adlis/Weiyin
Smart Desert cooling	Adlis/Weiyin
NVIDIA JETSON BOX - ONLY WITH OUR SMART CITY INTEGRATED MANAGEMENT	Adlis/Weiyin

Manufacture Principal Factory

03

Control Quality

Our quality control established in all our production "5 days of quality control 5 days/24 hours" will be maintained for the "Assembly Process" of each new factory. In addition, we will create a quality control department in each new factory with the same terms established in our main factory with the changes imposed by the standards of each country.



Manufacture Principal Factory

04

Testing Report

The testing reports established in all our production "after quality control" will be maintained for the "Assembly Process" of each new factory. The quality control department will be in charge of complying with the same terms established in our main factory with the changes imposed by the standards of each country.

ADLIS WEIYIN 成品质检报告 Quality Inspection Report					
产品名称 Product Name	WYC1802	订单号 PO No.	WYD2309042	日期 DATE	2023-11-10
类别 Category	序号 No.	项目 Item	工艺质检流程 Quality Inspection Process	测试 Test	评价 Note
外观 Outward	1	材质 Material	不锈钢 201 + 塑木 Stainless steel #201 + WPC wood	磁铁 Magnet	OK
	2	尺寸/颜色 Size/color	Bench: L170cm*W45cm*H45cm Pole: H250cm White color	游尺 Vernier	OK
	3	喷涂 Spraying	产品无明显污渍或外露胶水等现象 Product has no obvious stains or exposed glue, etc.	目测 Visual Inspection	OK
	4	酒精测试 Alcohol Test	表面测试 OK Surface test result: OK	手测 Hand Test	OK
	5	百格测试 100 Grid Test	表面测试 OK Surface test result: OK	胶纸测 Tape Test	OK
	6	太阳能板 Solar Panel	太阳能板 360W Pole with solar panel: 360W	目测 Visual Inspection	OK
	7	产品配置 Product Configuration	覆盖挡光膜/产品使用说明书/USB 盖 Cover the light-blocking film/product instruction manual/USB cover	目测 Visual Inspection	OK
功能配置 Function Configuration	1	USB 有/无线充 USB/Wireless Charger	2 个 USB 有线充电/2 个无线充电 2pcs USB charger/2pcs wireless charger	专用工具 Special Tools	OK
	2	蓝牙 Bluetooth	音效 OK Sound effect: OK	专用工具 Special Tools	OK

Office: Sderot Moriah 104, Haifa - Israel
Factory: Asher 4 Kiryat Yam - Israel
Factory: 2/F, Building E, Hengchangrong Industrial Park, Pinghu Street, Longgang District, Shenzhen City, Guangdong Province, China

ADLIS WEIYIN					
3	WIFI	工业级 4G 路由器, 对应国家正确 Industrial 4G router	手机测 Mobile Test	OK	
4	氛围灯 Ambient Light	LED 灯带粘接牢固, 亮度正常 The LED strip/spot light is firmly bonded and the brightness is normal	外力 External Force	OK	
5	控制器 Controller	功率符合产品要求 Power meets product requirements	万用表 Multimeter	OK	
6	LED 屏 LED screen	1 块 P2.5LED 全彩屏 P2.5, 1pc, full color	目测 Visual Inspection	OK	
7	产品配置 Product Configuration	覆盖挡光膜/产品使用说明书/USB 盖 Cover the light-blocking film/product instruction manual/USB cover	目测 Visual Inspection	OK	
包装 Package	1	拆分包 Split Package	产品包装用保护膜/珍珠棉 Protective film for product packaging/pearl cotton	目测 Visual Inspection	OK
	2	整体包 Whole Package	产品包装用保护膜/珍珠棉 Protective film for product packaging	目测 Visual Inspection	OK
	3	五金配件 Hardware Parts	螺丝若干 + 钥匙 1 个 Some screws + 1pc key	卡尺 Calipers	OK
	4	木架/箱 Wooden Frame/Box	待定 To be determined	游尺 Vernier	OK
	5	装柜 Cabinet Package	待定 To be determined	手机拍照 Phone photo	OK

NOTE:
1. Packed in Plywood box, with shipping mark on both sides.
2. The surface of the product has commercial signs such as metal plate and acrylic plate, and electronic accessories are attached with English instruction labels.

Office: Sderot Moriah 104, Haifa - Israel
Factory: Asher 4 Kiryat Yam - Israel
Factory: 2/F, Building E, Hengchangrong Industrial Park, Pinghu Street, Longgang District, Shenzhen City, Guangdong Province, China



Manufacture Principal Factory

05

Packages

Package all products with special protection and put in 10mm Plywood boxes with reinforcement around. We load all the boxes into a Container after confirming with the transportation company.



Manufacture Principal Factory

06

Shipment

Loading of products from the port of Shenzhen or Hong Kong to the destination of our new factories.



Manufacture Principal Factory

07

Tecnical/AI Platform Dept.

Our technical department and AI Platform will be in charge and will form the technical team of the new factories. We will send all the detailed documents for the assembly and Doron Asaraf (Manager Assembly Project) and his team will go to the new factories to train the workers. Mori Asaraf (Manager AI Platform) will design the space for the platform, Cloud Data and computers.

CLOUD PLATFORM HOSTING SERVER SMART DATA

Basic Platform: Perfect to start and create Total Smart City to offer to your customers. With very competitive prices to connect up to 200 products on the platform.

Premium Platform: Our Premium plan focuses on companies that are growing in Smart City and need to offer something more to their customers.

Premium Platform: With a full Platform license, the company becomes part of our technology with full access to the Platform. All the possibilities to your clients with total control.



ADLIS SMART CITY INTEGRATED MANAGEMENT SYSTEM

ADLIS CLOUD PLATFORM

Each of our products can be configured with different options. With our Hardware-Software combined with NVIDIA AI JETSON BOX allows us all possible options for total Smart City

	BASIC PLATFORM	PREMIUM PLATFORM	FULL PLATFORM
Licences Prices Month	Prices Cloud Month	Prices Cloud Month	Special Cloud Prices
1 to 200 JETSON BOX Connected	1 to 200 JETSON BOX Connected	200 to 1000 JETSON BOX Connected	Full JETSON BOX Connected

ADLIS HOSTING SERVER

Each NVIDIA AI JETSON BOX connected to our products is configured separately. We configure the JETSON BOX with a different protocol for each product. The configuration has an additional cost that is paid once. The cost depend on the configuration and components.

	BASIC PLATFORM	PREMIUM PLATFORM	FULL PLATFORM
Server Prices Year	Adlissmart Domain	Adlissmart SubDomain	Private Domain
1 to 200 JETSON BOX Connected	www.adlissmart.com/Name	www.adlissmart.com/Name	www.DomainName.com

ADLIS SMART DATA

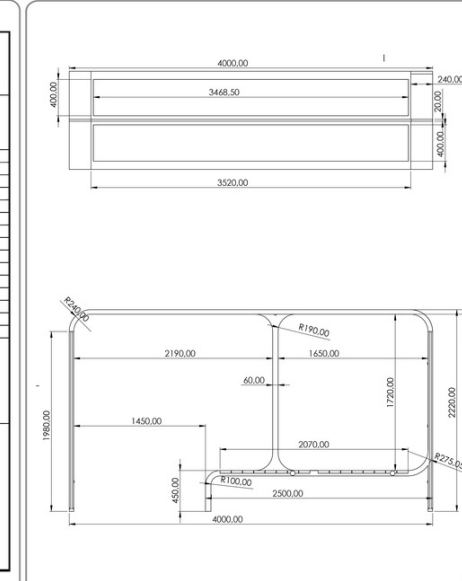
We manufacture the chosen Model and connect one NVIDIA AI JETSON BOX. We configure the JETSON BOX with our platform with unique protocol. Unique link for each Distributor and Client to control our platform and manage the data of each component.

	BASIC PLATFORM	PREMIUM PLATFORM	FULL PLATFORM
Standard Data Smart Components	Extra cost for more Components	Standard Data Smart Components	Extra Data Smart Components
1 to 200 JETSON BOX Connected	1 to 200 JETSON BOX Connected	1 to 200 JETSON BOX Connected	Full JETSON BOX Connected

- Our Platform is configured with the standard components in all our models.
- Standard components connected to an NVIDIA AI Jetson Box to be able to control all Standard components and manage data.
- Each Jetson Box has an extra cost: **MODEL + JETSON BOX + Platform Plan**
- To receive information about our standard components list and prices for Basic/Premium/Full Platform contact:
- mori@adlissmart.com / Office@QpTeamizer.co.il

Characteristics

Model	WYS1817	Appearance	
Size	400*180*233		
N.W.	5500KG		
G.W.	6000KG		
Certificate	CE ISO		
Function	In sunlight condition, product will charge built-in battery by solar panel, and then provide energy for phone chargers, lights and advertising display. Optional total smart city with our platform.		
Material	Stainless steel #201 + WPC WOOD		
Solar panel	Monocrystalline Silicon		
Solar power	420W		
AC power	Optional		
Controller	MPPT Controller		
Battery type	Gel battery, LiFePO4 optional		
Working temp.	-20C~40C/20C-65C		
Battery capacity	12V/200Ah		
USB charger	2		
Wireless charger	2		
LED light	LED strip white+sensor for light		
Advertising display	1 LED light box *2 windows + LED screen optional		
WiFi router	4G/International router / Optional		
Bluetooth/speaker	NO		
Warranty	NO		
Battery notice	The controller works well above -40°C, while the working efficiency of battery is getting less and less under 0°C, when -10°C it already doesn't work. Yet after the temperature rises back to over 0°C, it will work again. Therefore, in very cold winter the charges on bench don't work. In good sunshine, the battery is fully charged in about 7-8 hours.		



In sunlight condition, product will charge built-in Li-ion battery by solar panel, and charge cell phones by cables simultaneously. Without sunlight condition, product will charge cell phone by its built-in battery.

B. Intended use:
This product is intended for outdoor use only. Please place it on a flat floor and away from any shade. If in the shade, the solar panel will not function effectively.

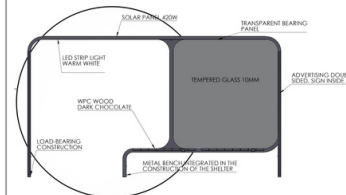
C. Package Content:

D. Safety instructions:

ATTENTION:
We recommend that a qualified person use it to assemble and disassemble the product to avoid any risk of product deterioration.
The product is self-service, that is, users do not need help to charge their device.
Read carefully and follow the safety instructions for care, maintenance, storage and transport.
We recommend using the original packaging for transportation to protect the product from dust and moisture.
We are not responsible for damage to persons or property caused by improper installation or operation not described in this guide. Any alteration and / or modification of the product or its accessories immediately voids the warranty.



ation:



F. Care, maintenance, storage and transport:

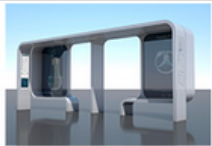




WARNING!
We recommend that a qualified person use it to assemble and disassemble the product to avoid any risk of product deterioration.
We grant a conditional warranty of 2 year for this device from the purchase date.
The warranty also does not cover accidental damage or vandalism caused to the product.
The warranty also does not cover the charging cables. We have no control over how users treat cables once the product is installed on your premises; replacement cables can be purchased at an additional cost.
We are not responsible for damage to persons or property caused by improper installation or operation not described in this guide. Any alteration and / or modification of the product or its accessories immediately voids the warranty.

Manufacture Principal Factory

08

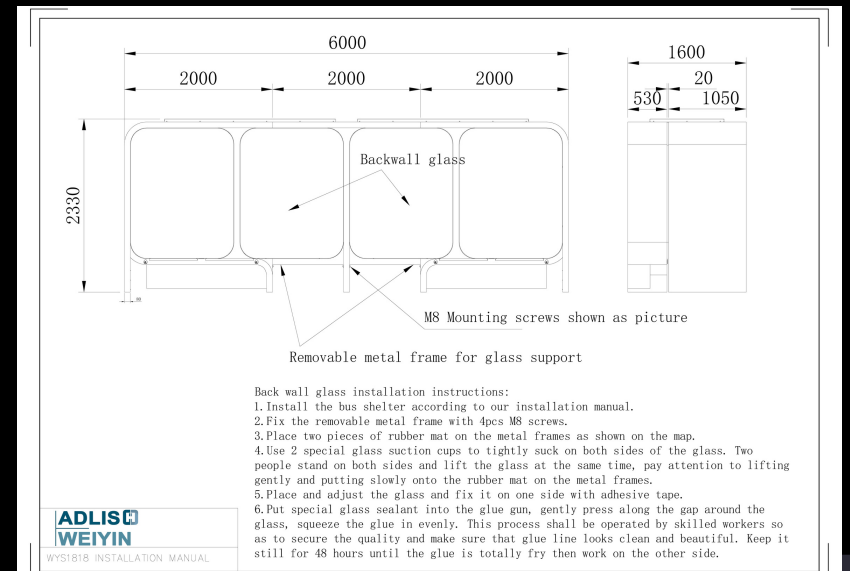
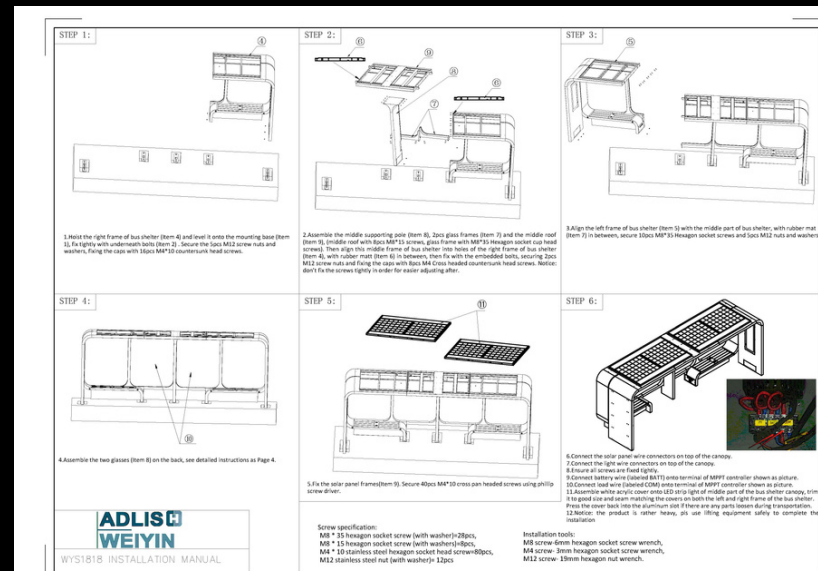
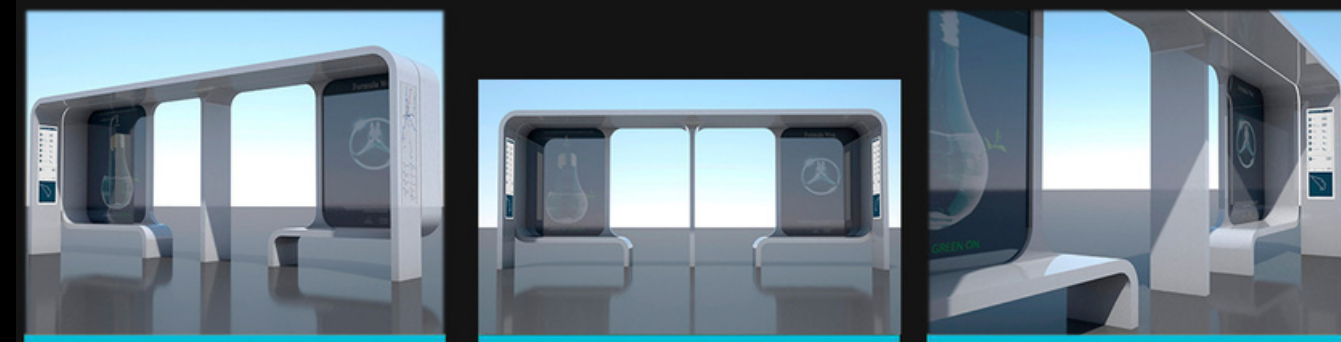
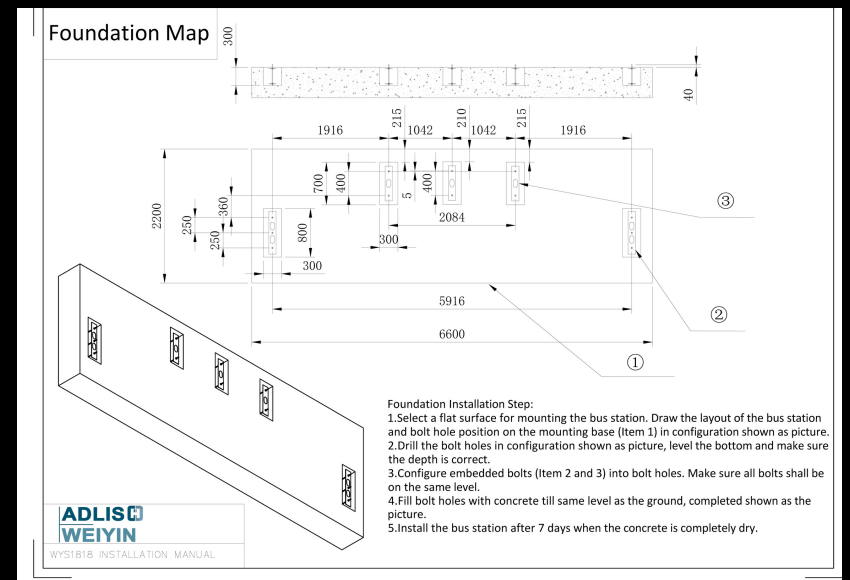
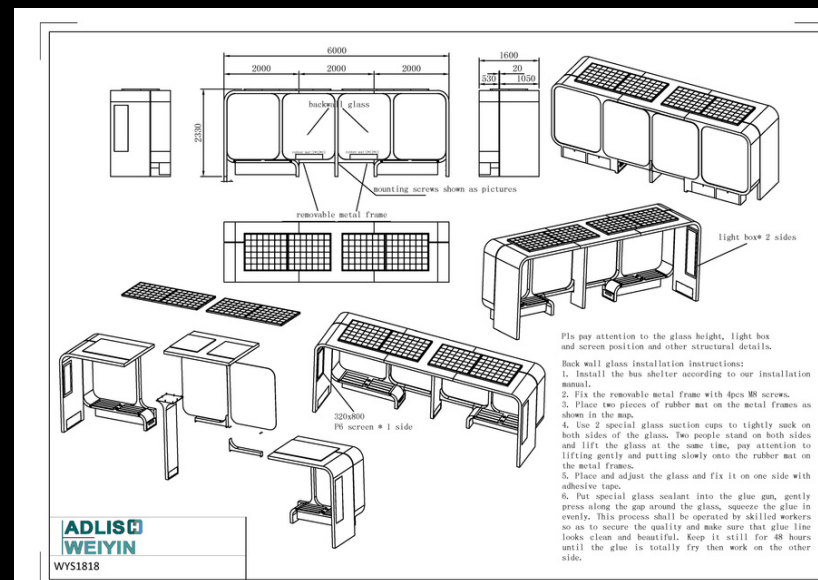
Architect/Ingeniero Dept.

Our department is in charge of preparing the designs to manufacture our products. They also prepare projects for our clients when they require it. Our architects will be in charge of designing and preparing all the CAD, 3D plans and permits necessary for each new factory.

MATERIAL DETAILS															
PO NO.:	WY011008														
Product:	Solar bus shelter														
Quantity:	1 set														
Dimension:	6000*1500*2200														
Made by:	ADLIS/WEIYIN Corp														
NO.	MATERIAL	PICTURE	WATERIAL INFORMATION												
1	Steel		<table border="1"> <tr> <td>Name</td> <td>Galvanized steel</td> <td>Quantity</td> <td>6 sheets</td> </tr> <tr> <td>Size</td> <td>L-1250mm, W-2500mm, Thick-2.0mm</td> <td>Purchase</td> <td></td> </tr> <tr> <td>Parameter</td> <td></td> <td>Note</td> <td>Main part</td> </tr> </table>	Name	Galvanized steel	Quantity	6 sheets	Size	L-1250mm, W-2500mm, Thick-2.0mm	Purchase		Parameter		Note	Main part
Name	Galvanized steel	Quantity	6 sheets												
Size	L-1250mm, W-2500mm, Thick-2.0mm	Purchase													
Parameter		Note	Main part												
2	Steel		<table border="1"> <tr> <td>Name</td> <td>Galvanized steel square tube</td> <td>Quantity</td> <td>30pcs</td> </tr> <tr> <td>Size</td> <td>L-6000mm, W-80mm, D-40mm, Thick-2.0mm</td> <td>Purchase</td> <td></td> </tr> <tr> <td>Parameter</td> <td></td> <td>Note</td> <td>Inside frame</td> </tr> </table>	Name	Galvanized steel square tube	Quantity	30pcs	Size	L-6000mm, W-80mm, D-40mm, Thick-2.0mm	Purchase		Parameter		Note	Inside frame
Name	Galvanized steel square tube	Quantity	30pcs												
Size	L-6000mm, W-80mm, D-40mm, Thick-2.0mm	Purchase													
Parameter		Note	Inside frame												
3	Glass		<table border="1"> <tr> <td>Name</td> <td>Tempered laminated glass</td> <td>Quantity</td> <td>1pc</td> </tr> <tr> <td>Size</td> <td>1500*1500mm</td> <td>Purchase</td> <td></td> </tr> <tr> <td>Parameter</td> <td>5mm+5mm+3mm lamination in between</td> <td>Note</td> <td>Big advertising light box</td> </tr> </table>	Name	Tempered laminated glass	Quantity	1pc	Size	1500*1500mm	Purchase		Parameter	5mm+5mm+3mm lamination in between	Note	Big advertising light box
Name	Tempered laminated glass	Quantity	1pc												
Size	1500*1500mm	Purchase													
Parameter	5mm+5mm+3mm lamination in between	Note	Big advertising light box												
4	Glass		<table border="1"> <tr> <td>Name</td> <td>Tempered laminated glass</td> <td>Quantity</td> <td>2pcs</td> </tr> <tr> <td>Size</td> <td>600*1800mm</td> <td>Purchase</td> <td></td> </tr> <tr> <td>Parameter</td> <td>5mm+5mm+3mm lamination in between</td> <td>Note</td> <td>Main glass on two sides</td> </tr> </table>	Name	Tempered laminated glass	Quantity	2pcs	Size	600*1800mm	Purchase		Parameter	5mm+5mm+3mm lamination in between	Note	Main glass on two sides
Name	Tempered laminated glass	Quantity	2pcs												
Size	600*1800mm	Purchase													
Parameter	5mm+5mm+3mm lamination in between	Note	Main glass on two sides												

	Name	Glass laminated transparent solar cells	Quantity	2pcs
	Size	1250*2400mm	Brand	Suhua
	Parameter	840W / 400AH	Note	Top solar panel
	Name	MPPT controller	Quantity	1 set
	Size	5306	Brand	EPower
	Parameter	20A	Note	
	Name	Gel battery	Quantity	2pcs
	Size		Brand	Allbrand
	Parameter	55AH/12V	Note	
	Name	Outdoor led screen	Quantity	1 set
	Size	384*184mm	Purchase	receiving card included (Carfax brand)
	Parameter	P6 full color screen	Note	with cover inside
	Name	5V voltage converter	Quantity	1pc
	Size	28V to 5V/20A	Purchase	
	Parameter		Note	Power supply for screen
	Name	Flexible led strip light	Quantity	5 meters
	Size	20*20mm	Purchase	
	Parameter	28V	Note	
	Name	Human body sensor switch	Quantity	1pc
	Size	28V	Purchase	
	Parameter		Note	

	Name	Diffuse led strip light	Quantity	1pc
	Size	12V	Purchase	
	Parameter		Note	Inside LED light box
	Name	DC cable	Quantity	30 meters
	Size	6 square meters	Purchase	
	Parameter		Note	
	Name	Terminal block	Quantity	2pcs
	Size	ZSA-6	Purchase	
	Parameter		Note	
	Name	Photovoltaic control	Quantity	1pc
	Size	28V	Purchase	
	Parameter		Note	for strip light and light box

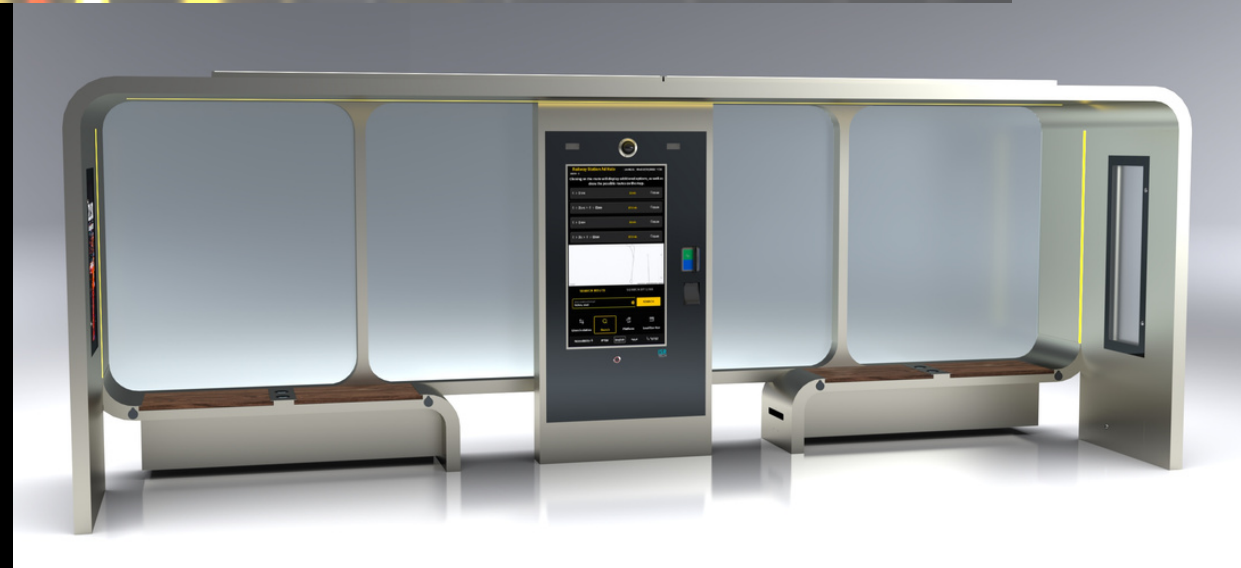


Manufacture Principal Factory

09

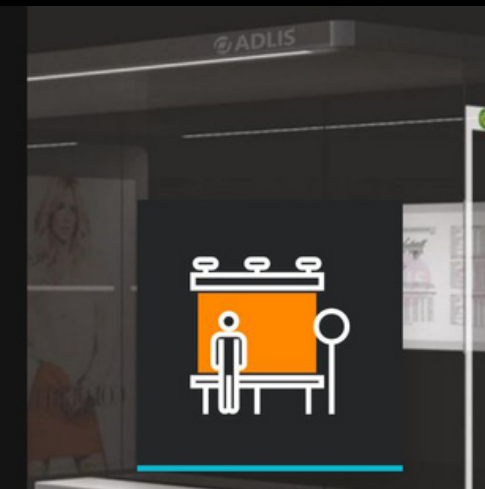
Design Dept.

Our department is in charge of all designs for marketing and communication, social media, catalogs, data sheets and much more. Our department will prepare everything necessary for the new factories, both the catalogs of the products that each new factory will manufacture and any necessary documents.



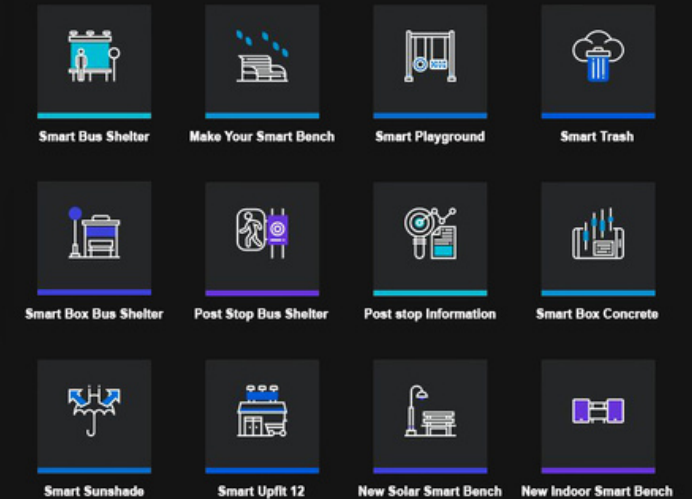
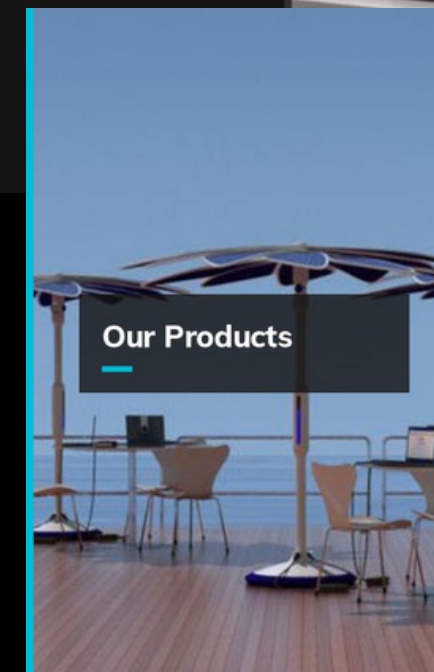
Smart Bus Shelter WYS1818 - 6M

- Solar panel
- Advertising Box LED display
- WiFi
- Camera
- Sensor
- Luminaire
- Bus stop marking
- Traffic information
- USB charging
- Wireless charging
- Adlis Smart App
- Led Screen
- GPS: Optional
- Lighting Sensor Body



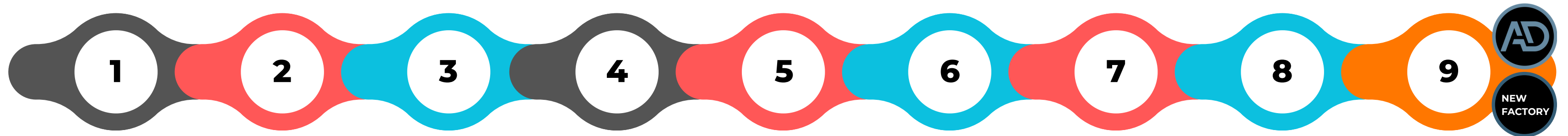
3D

AR/VR



Adlis/Weiyin Corporation

NEW FACTORY: Assembly Process New Factory



Custom Clearance

The transportation procedures and documents necessary for Custom clearance will be organized from our main factory.

Assembly Process

The assembly process created by Adlis Smart offers all the elements and details for the manufacture of our products.

Transport - Installation

The new factories will be in charge of loading the products, shipping them to the customer anywhere in the country or outside the country.

Certificate Process

All certificates from our main factory will be available to each new factory and registered in each country.

Control Quality

The quality control established in all our production will be maintained for new factories "Assembly Process"

Tecnical/AI Platform Dept.

Our technical department and AI Platform will be in charge and will form the technical team of the new factories. Same with the AI Platform space.

Factory Organization

The new factories designed by Adlis Smart are prepared with everything necessary for start-up.

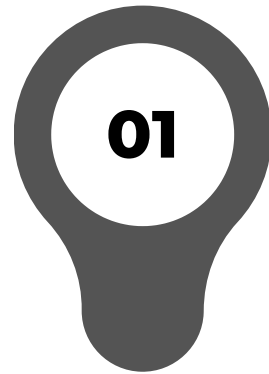
Testing Report

The testing reports on all our production will be maintained for the "Assembly Process" of each new factory.

Architect/Ingeniero Dept.

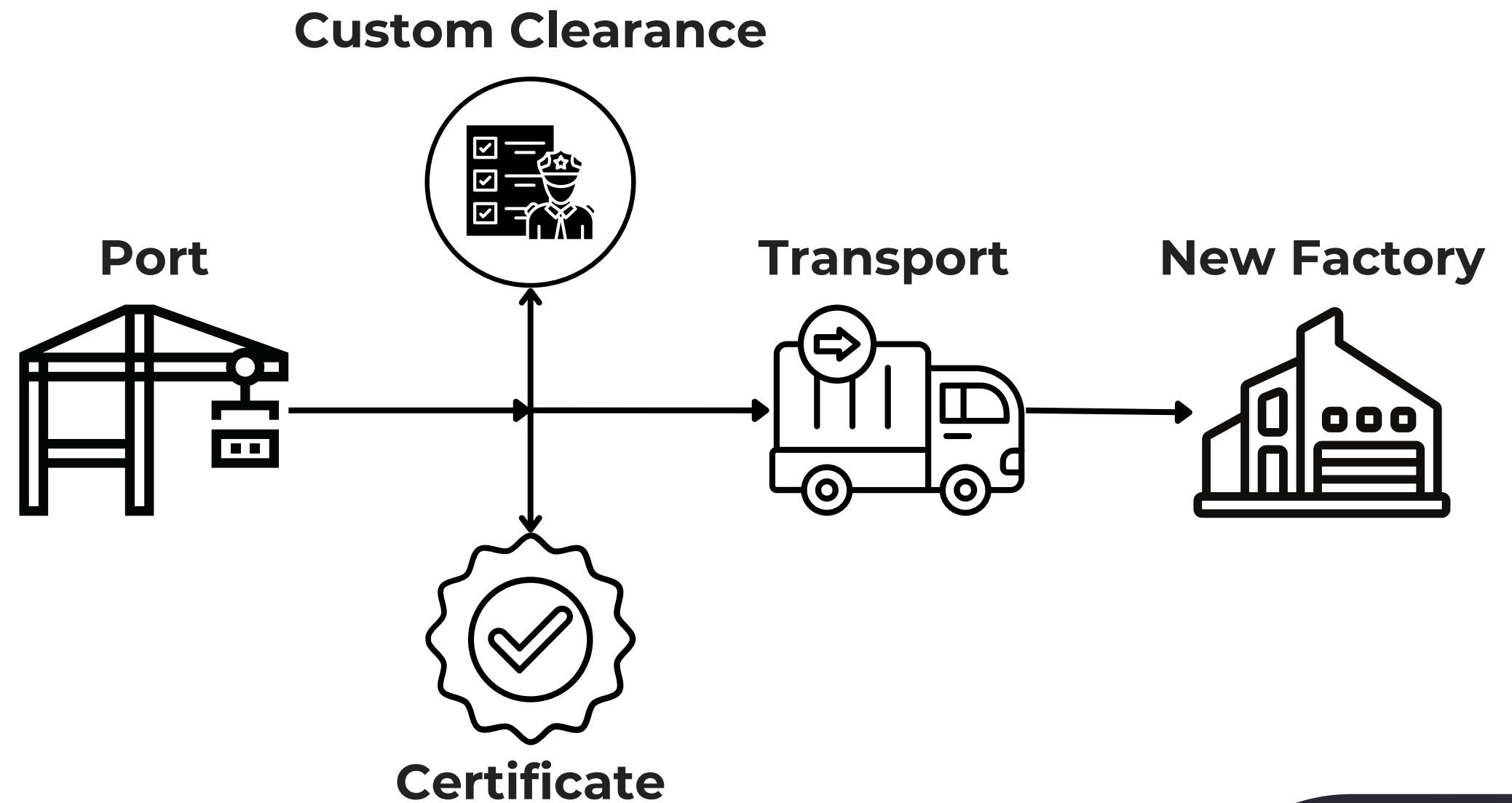
They are in charge of all the Artwork of our products and prepare specific projects for our clients. They prepare all the plans, 3D/AR/VR of the new factories.

Manufacture New Factory



Custom Clearance

All transportation procedures and documents necessary for Custom clearance will be organized from our main factory. During the preparation and organization of the new factory and Showroom, the new factory together with Adlis Smart will take care of the new necessary local certificates. Products sent by the showroom will be used for new certificates.

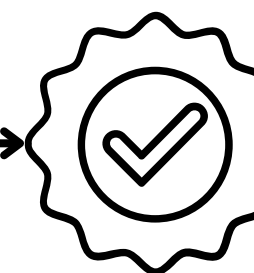
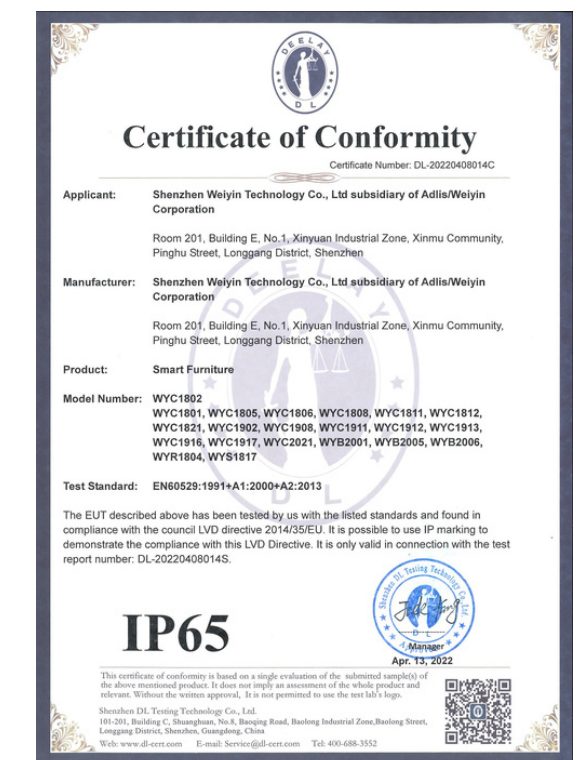


Manufacture New Factory



Certificate Process

All certificates from our main factory will be available to each new factory and registered in each country. As well as ISO, IP, IK and other certificates and CE certificates for new factories within the European Community. In addition, we will make the necessary certificates in accordance with the standards of each country and we will deliver a letter to create a "MADE IN" certificate.



New Certificate



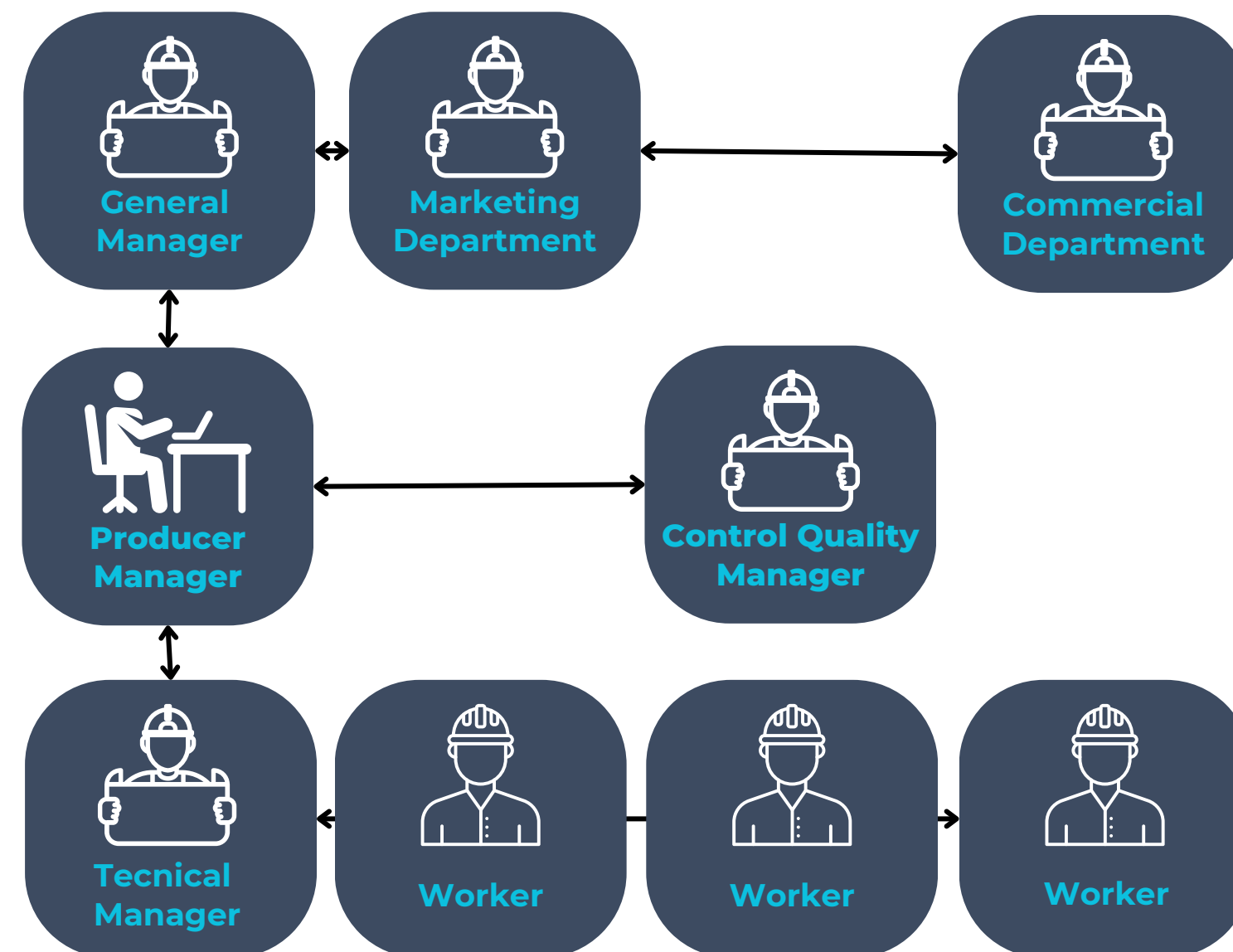
Made In Certificate

Manufacture New Factory



Factory Organization

The new factories conceived and designed by Adlis Smart are prepared with everything necessary for start-up in a very short time. For more information about the Factory 2024 Design Plan, contact: Assembly-Process@adlissmart.com



New factory in the country " " Create a new company Ltd with the name Adlis Smart or another name according to the investor's condition.

Adlis Smart	Inversor	New Factory
-------------	----------	-------------

Hire a company/Lawyers for Partnership contracts, factory legal agreements, statutes and other necessary procedures.

Rent a factory in an industrial area and make it an important and recognized area throughout the country. The size of the factory will depend on the **4 options chosen by partners and investors.**

The factory, apart from its indoor space, will have an open space of at least 1000m2 for different functions:

- **Showroom - Loading and Unloading - Quality Control**
- **Parking for workers and clients - Material storage**

Manufacture New Factory



Assembly Process

The assembly process created by Adlis Smart offers all the elements and details to accelerate the manufacturing of our products, reduce costs for a high-level product. **For more information about the Factory 2024 Design Plan, contact:**

Assembly-Process@adlissmart.com

PROCESSING AND MATERIAL LIST	YES= The distributor does	Second painting	PUT YES OR NO
ASSEMBLY PROCESS	NO= Adlis/Weiyin does	Cutting and assembly the wires	PUT YES OR NO
PROCESSING	WHERE TO HANDLE	Assembly the solar panel	PUT YES OR NO
Cutting	Adlis/Weiyin	Assembly the electronic components	PUT YES OR NO
Bending	Adlis/Weiyin	Material	WHERE TO HANDLE
Welding	Adlis/Weiyin	Stainless steel #201 #304 #316	Adlis/Weiyin
Polishing	Adlis/Weiyin	WPC WOOD (separate before delivery)	PUT YES OR NO
Dust scraping before and after oil painting protection	Adlis/Weiyin	Glass (separate before delivery)	Adlis/Weiyin
Option 1: Premier stainless steel protection: one thin layer of oil painting in light gray color, after cannot be put into oven and can only be oil painted	PUT YES OR NO	Screws and anchors and rubber strip for light box	PUT YES OR NO
Option 2: Premier stainless steel protection: one thin layer of powder coating in light gray color, after can either be oil painted or power coated	PUT YES OR NO	Silicone sealant, tools like wrench and screw driver	
Wood cutting (Option Woodless Model)	Adlis/Weiyin	Electronic components (All separate before delivery)	WHERE TO HANDLE
Packing in foams and plywood box	Adlis/Weiyin	Solar panels	Adlis/Weiyin
Smart motherboard	PUT YES OR NO	MPPT controller	PUT YES OR NO
USB and wireless chargers	PUT YES OR NO	E-ink	PUT YES OR NO
LED pendal light	Adlis/Weiyin	Led Screen	Adlis/Weiyin
LED diffuse light	Adlis/Weiyin	Advertising Display	Adlis/Weiyin
One roll of electric wires	PUT YES OR NO	Smart Camera	PUT YES OR NO
PIR motion sensor	PUT YES OR NO	All Sensors - CO2, Waterproof, Humidity and more	PUT YES OR NO
Optical sensor switch	PUT YES OR NO	Smart Voice	Adlis/Weiyin
bluetooth & speaker	PUT YES OR NO	Advertising Display	PUT YES OR NO
WiFi router	PUT YES OR NO	Smart Digital Kiosk	Adlis/Weiyin
Battery	Adlis/Weiyin	Smart Desert cooling	Adlis/Weiyin
		NVIDIA JETSON BOX - ONLY WITH OUR SMART CITY INTEGRATED MANAGEMENT	Adlis/Weiyin

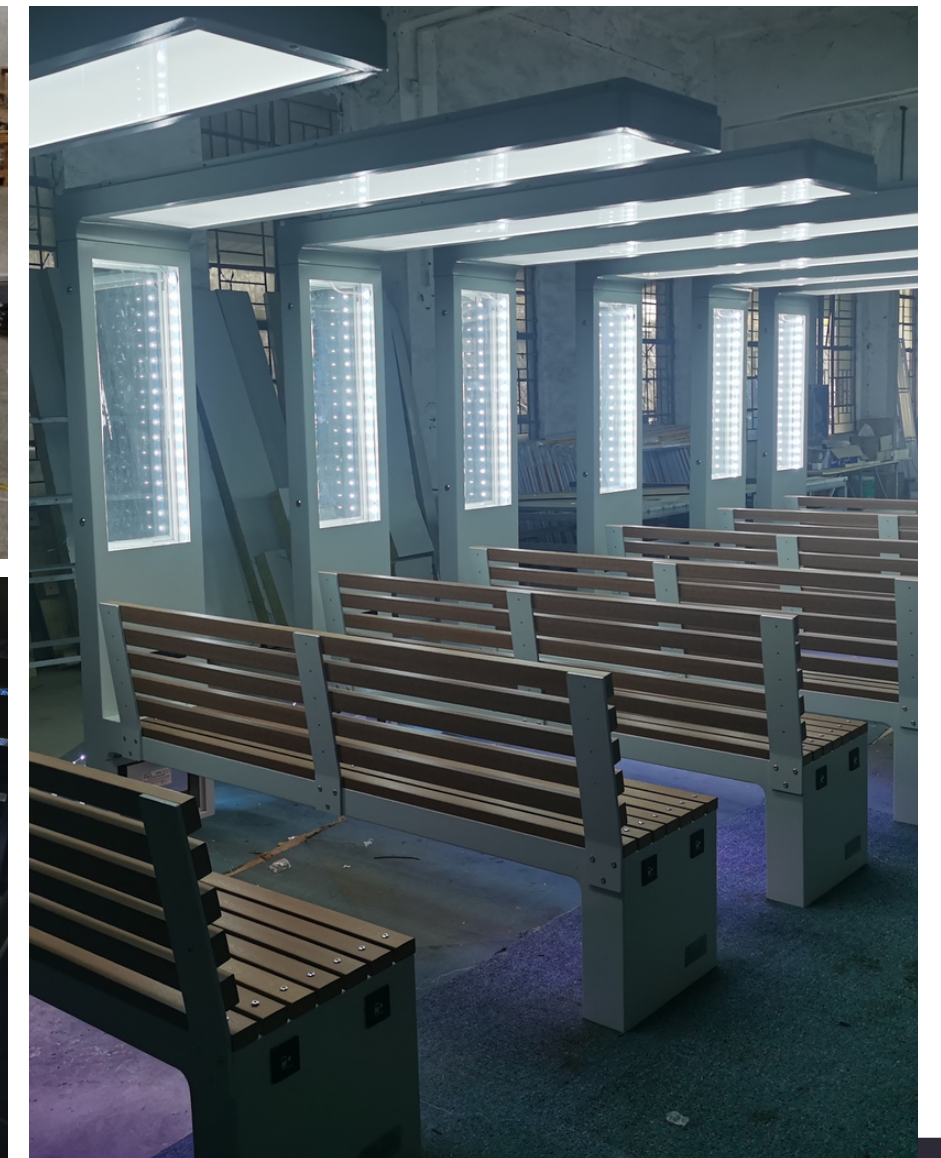


Manufacture New Factory

05

Control Quality

Our quality control established in all our production "5 days of quality control 5 days/24 hours" will be maintained for the "Assembly Process" of each new factory. In addition, we will create a quality control department in each new factory with the same terms established in our main factory with the changes imposed by the standards of each country.



Manufacture New Factory



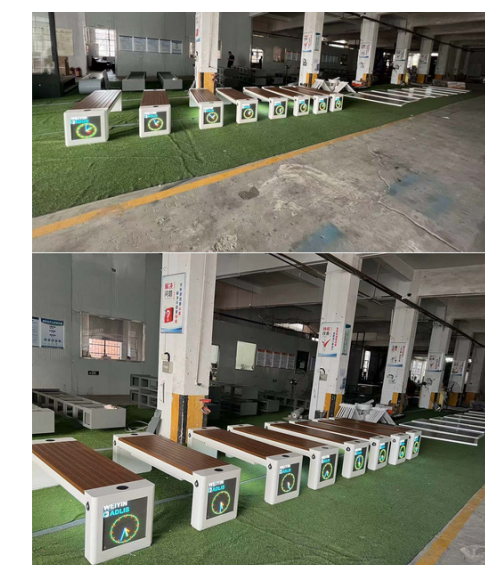
Testing Report

The testing reports established in all our production "after quality control" will be maintained for the "Assembly Process" of each new factory. The quality control department will be in charge of complying with the same terms established in our main factory with the changes imposed by the standards of each country.

成品质检报告 Quality Inspection Report					
产品名称 Product Name	WYC1802	订单号 PO No.	WYD2309042	日期 DATE	2023-11-10
类别 Category	序号 No.	项目 Item	工艺质检流程 Quality Inspection Process	测试 Test	评价 Note
外观 Outward	1	材质 Material	不锈钢 201 + 塑木 Stainless steel #201 + WPC wood	磁铁 Magnet	OK
	2	尺寸/颜色 Size/color	Bench: L170cm*W45cm*H45cm Pole: H250cm White color	游尺 Vernier	OK
	3	喷涂 Spraying	产品无明显污渍或外露胶水等现象 Product has no obvious stains or exposed glue, etc.	目测 Visual Inspection	OK
	4	酒精测试 Alcohol Test	表面测试 OK Surface test result: OK	手测 Hand Test	OK
	5	百格测试 100 Grid Test	表面测试 OK Surface test result: OK	胶纸测 Tape Test	OK
	6	太阳能板 Solar Panel	太阳能板 360W Pole with solar panel: 360W	目测 Visual Inspection	OK
	7	产品配置 Product Configuration	覆盖挡光膜/产品使用说明书/USB 盖 Cover the light-blocking film/product instruction manual/USB cover	目测 Visual Inspection	OK
功能配置 Function Configuration	1	USB 有/无线充 USB/Wireless Charger	2 个 USB 有线充电/2 个无线充电 2pcs USB charger/2pcs wireless charger	专用工具 Special Tools	OK
	2	蓝牙 Bluetooth	音效 OK Sound effect: OK	专用工具 Special Tools	OK

ADLIS WEIYIN					
3	WIFI	工业级 4G 路由器, 对应国家正确 Industrial 4G router	手机测 Mobile Test	OK	
4	氛围灯 Ambient Light	LED 灯带粘接牢固, 亮度正常 The LED strip/spot light is firmly bonded and the brightness is normal	外力 External Force	OK	
5	控制器 Controller	功率符合产品要求 Power meets product requirements	万用表 Multimeter	OK	
6	LED 屏 LED screen	1 块 P2.5LED 全彩屏 P2.5, 1pc, full color	目测 Visual Inspection	OK	
7	产品配置 Product Configuration	覆盖挡光膜/产品使用说明书/USB 盖 Cover the light-blocking film/product instruction manual/USB cover	目测 Visual Inspection	OK	
包装 Package	1	拆分包 Split Package	产品包装用保护膜/珍珠棉 Protective film for product packaging/pearl cotton	目测 Visual Inspection	OK
	2	整体包 Whole Package	产品包装保护膜/珍珠棉 Protective film for product packaging	目测 Visual Inspection	OK
	3	五金配件 Hardware Parts	螺丝若干 + 钥匙 1 个 Some screws + 1pc key	卡尺 Calipers	OK
	4	木架/箱 Wooden Frame/Box	待定 To be determined	游尺 Vernier	OK
	5	装柜 Cabinet Package	待定 To be determined	手机拍照 Phone photo	OK

NOTE:
1. Packed in Plywood box, with shipping mark on both sides.
2. The surface of the product has commercial signs such as metal plate and acrylic plate, and electronic accessories are attached with English instruction labels.



Manufacture New Factory

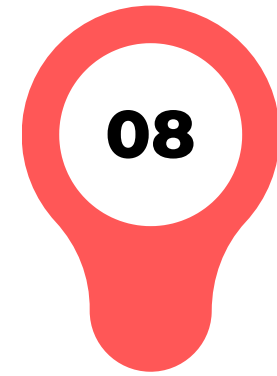
07

Transport - Installation

The new factories will be in charge of loading the products, shipping them to the customer anywhere in the country or outside the country. If the client demands it, the new factories will also install the products for the client. In the event that the factory does the installation, Adlis Smart will send experienced workers and a construction engineer to supervise the entire installation.



Manufacture New Factory



Tecnical/AI Platform Dept.

Our technical department and AI Platform will be in charge and will form the technical team of the new factories. We will send all the detailed documents for the assembly and Doron Asaraf (Manager Assembly Project) and his team will go to the new factories to train the workers. Mori Asaraf (Manager AI Platform) will design the space for the platform, Cloud Data and computers.

CLOUD PLATFORM HOSTING SERVER SMART DATA

Basic Platform: Perfect to start and create Total Smart City to offer to your customers. With very competitive prices to connect up to 200 products on the platform.

Premium Platform: Our Premium plan focuses on companies that are growing in Smart City and need to offer something more to their customers.

Premium Platform: With a full Platform license, the company becomes part of our technology with full access to the Platform. All the possibilities to your clients with total control.

SMART CITY - AI

STREET FURNITURE SOLAR AND SMART

AI

Data Management Platform

ADLIS SMART OPTIMIZER

DIGITAL TECHNOLOGY

NVIDIA AI JETSON BOX

www.adlissmart.com/Platform

ADLIS SMART CITY INTEGRATED MANAGEMENT SYSTEM

ADLIS CLOUD PLATFORM

Each of our products can be configured with different options. With our Hardware-Software combined with NVIDIA AI JETSON BOX allows us all possible options for total Smart City

	BASIC PLATFORM	PREMIUM PLATFORM	FULL PLATFORM
Licences Prices Month	Prices Cloud Month	Prices Cloud Month	Special Cloud Prices
	1 to 200 JETSON BOX Connected	200 to 1000 JETSON BOX Connected	Full JETSON BOX Connected

ADLIS HOSTING SERVER

Each NVIDIA AI JETSON BOX connected to our products is configured separately. We configure the JETSON BOX with a different protocol for each product. The configuration has an additional cost that is paid once. The cost depend on the configuration and components.

	BASIC PLATFORM	PREMIUM PLATFORM	FULL PLATFORM
Server Prices Year	Adlissmart Domain	Adlissmart SubDomain	Private Domain
	www.adlissmart.com/Name	www.Name.adlissmart.com	www.DomainName.com
	1 to 200 JETSON BOX Connected	1 to 200 JETSON BOX Connected	Full JETSON BOX Connected

ADLIS SMART DATA

We manufacture the chosen Model and connect one NVIDIA AI JETSON BOX. We configure the JETSON BOX with our platform with unique protocol. Unique link for each Distributor and Client to control our platform and manage the data of each component.

	BASIC PLATFORM	PREMIUM PLATFORM	FULL PLATFORM
Standard Data Smart Components	Standard Data Smart Components	Extra Data Smart Components	Extra cost for Special Components
	Extra cost for more Components	Extra cost for more Components	

- Our Platform is configured with the standard components in all our models.
- Standard components connected to an NVIDIA AI Jetson Box to be able to control all Standard components and manage data.
- Each Jetson Box has an extra cost: **MODEL + JETSON BOX + Platform Plan**
- To receive information about our standard components list and prices for Basic/Premium/Full Platform contact:
 - mori@adlissmart.com / Office@OpTeamizer.co.il

Characteristics

Model	WYS1817	Appearance
Size	400*108*233	
N.W.	550KG	
G.W.	600KG	
Certificate	CE ISO	
Function	In sunlight condition, product will charge build-in battery by solar panel, and then provide energy for phone chargers, lights and advertising display. Optional total smart city with our platform.	
Material	Stainless steel #201 + WPC WOOD	
Solar panel	Monocrystalline Silicon	
Solar power	420W	
AC power	Optional	
Controller	MPPT Controller	
Battery type	Gel battery, LiFePo4 optional	
Working temp.	-20C-40C/-20C-65C	
Battery capacity	12V/200Ah	
USB charger	2	
Wireless charger	2	
LED light	LED strip white+sensor for light	
Advertising display	1 LED light box *2 windows + LED screen optional	
WiFi router	4G/International router / Optional	
Bluetooth/speaker	NO	
Warranty	NO	
Battery notice	The controller works well above -40°C, while the working efficiency of battery is getting less and less under 0°C, when -10°C it already doesn't work. Yet after the temperature rises back to over 0°C, it will work again. Therefore, in very cold winter the chargers on bench don't work. In good sunshine, the battery is fully charged in about 7-8 hours.	

LOGO NEW FACTORY

A. Description and function:
In sunlight condition, product will charge build-in Li-Ion battery by solar panel, and charge cell phones for various smartphones. Without sunlight condition, product will charge cell phones by built-in battery.

B. Intended use:
This product is intended for outdoor use only. Please place it on a flat floor and away from the shade. If in the shade, the solar panel will not function effectively.

C. Package Content:

D. Safety instructions:

E. Connection and operation:

F. Care, maintenance, storage and transport:

4000.00
3468.50
240.00
400.00
3520.00

1980.00
2190.00
1650.00
60.00
1720.00
2070.00
2500.00
4000.00
450.00
R190.00
R273.65
50.00
2220.00

A. Description and function:
In sunlight condition, product will charge build-in Li-Ion battery by solar panel, and charge cell phones for various smartphones. Without sunlight condition, product will charge cell phones by built-in battery.

B. Intended use:
This product is intended for outdoor use only. Please place it on a flat floor and away from the shade. If in the shade, the solar panel will not function effectively.

C. Package Content:

D. Safety instructions:

E. Connection and operation:

F. Care, maintenance, storage and transport:

A. Description and function:
In sunlight condition, product will charge build-in Li-Ion battery by solar panel, and charge cell phones for various smartphones. Without sunlight condition, product will charge cell phones by built-in battery.

B. Intended use:
This product is intended for outdoor use only. Please place it on a flat floor and away from the shade. If in the shade, the solar panel will not function effectively.

C. Package Content:

D. Safety instructions:

E. Connection and operation:

F. Care, maintenance, storage and transport:

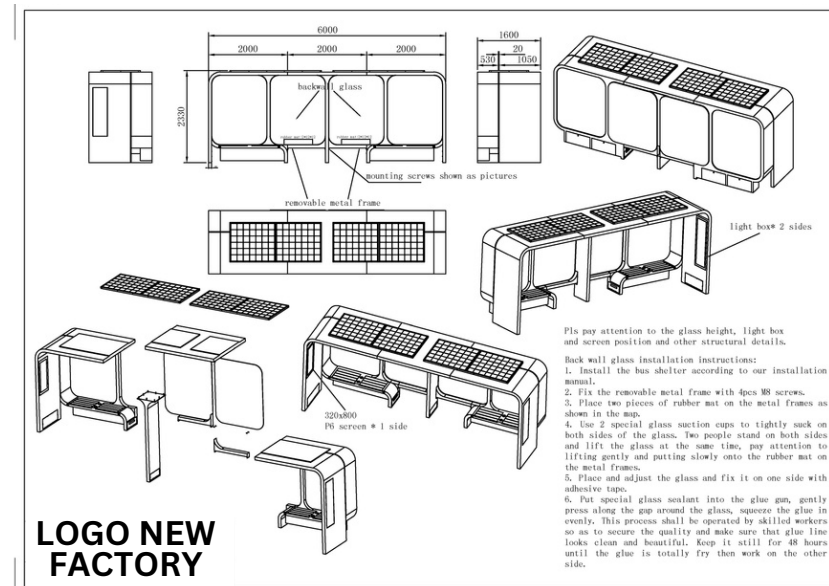
LOGO NEW FACTORY

Manufacture New Factory

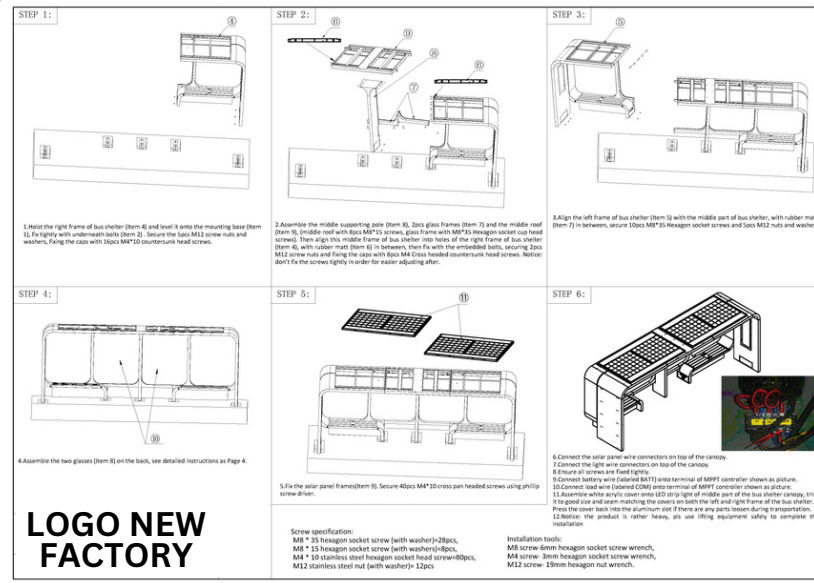


Architect/Ingeniero/Design Dept.

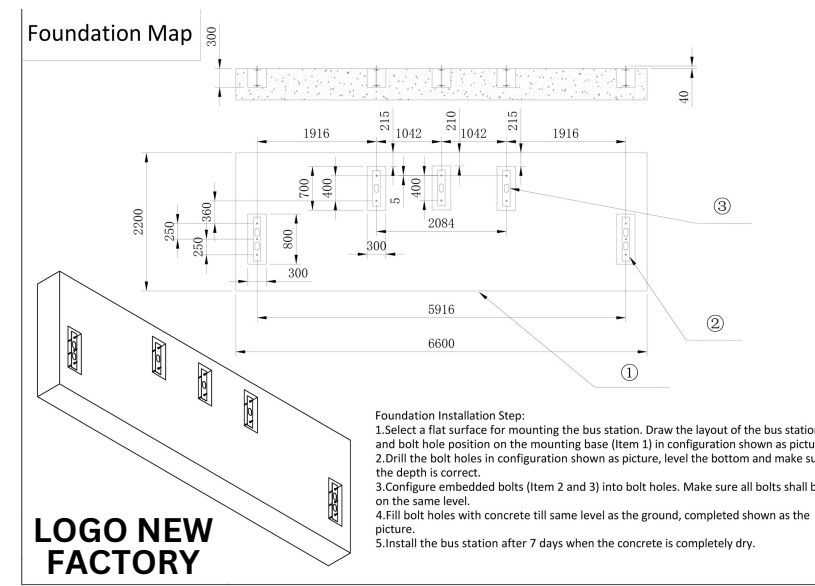
Our architects will be in charge of designing and preparing all the CAD, 3D plans and permits necessary for each new factory. Our Design department will prepare everything necessary for the new factories, both the catalogs of the products that each new factory will manufacture and any necessary documents.



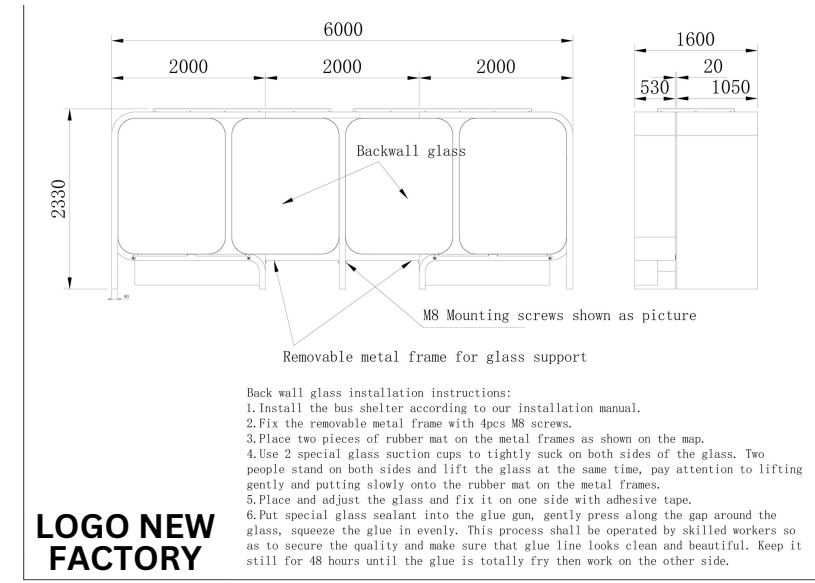
LOGO NEW FACTORY



LOGO NEW FACTORY



LOGO NEW FACTORY



LOGO NEW FACTORY

Catalogue design new factory

NEW

2023-2024
NAME NEW FACTORY

LOGO NEW FACTORY

NAME NEW FACTORY
 WEB NEW FACTORY
 WEB NEW FACTORY

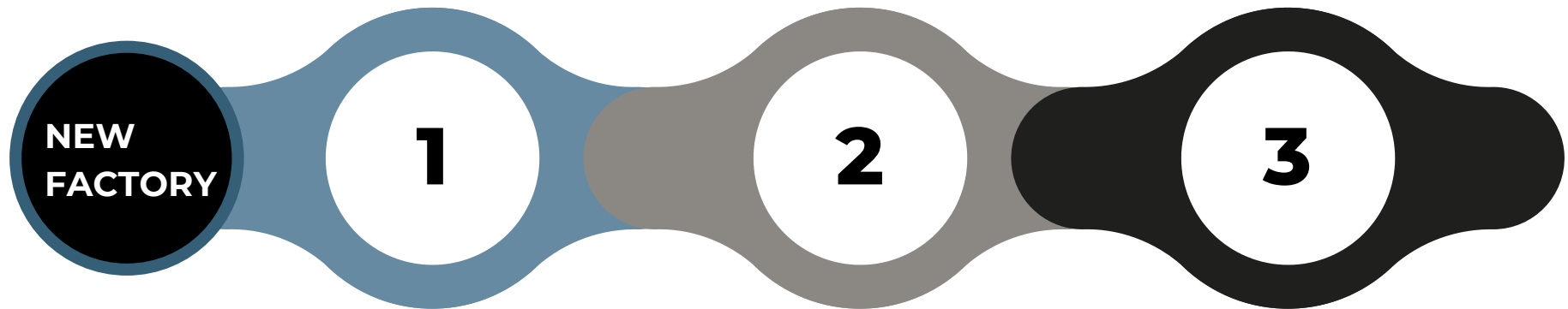
ADDRESS NEW FACTORY

NAME MANAGER NEW FACTORY
 PHONE NEW FACTORY
 MAIL NEW FACTORY

AD ADLIS SMART PTEAMIZER NVIDIA INCEPTION PROGRAM

NEXT GEN OF ADLIS INTEGRATED SYSTEM POWERED BY NVIDIA JETSON

Service - Installation - Maintenance



Service

Providing a service totally dedicated to our clients is one of the most important points of our company and the new factories will have to maintain that same policy.

Manufacturing and selling products is part of a service but not the most important one.

Maintaining customer loyalty by offering our customers the best service is the basis of Adlis Smart.



Installation

Our company offers different options and the New Factory will maintain the same strategy:

- Official Distributor: **(The distributor does the installation and configuration).**
- Normal customer: **(We do the installation and configuration).**
- Municipality, Institution, Government: **(We do the entire process, manufacturing, foundation foundation, installation, configuration, engineer certifications and more)**



Maintenance/Warranty

Our company offers different options and the New Factory will maintain the same strategy:

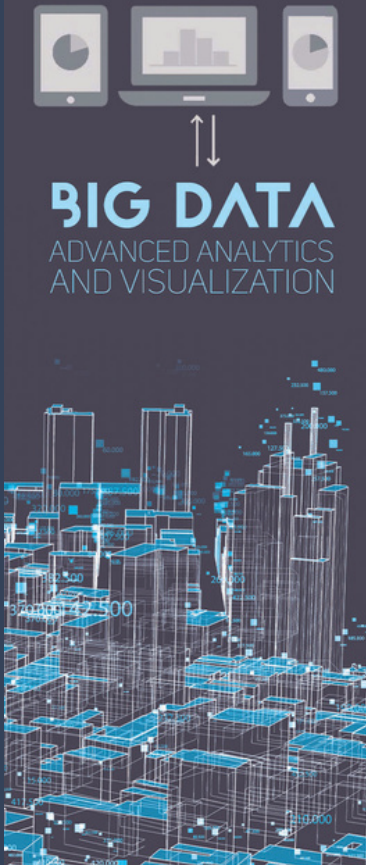
- Official Distributor: **(The distributor does the installation and configuration).**
- Normal customer: **(We do the installation and configuration).**
- Municipality, Institution, Government: **(We do the entire process, manufacturing, foundation foundation, installation, configuration, engineer certifications and more).**

Manufacture New Factory

02

Installation

Our company has different options for installation/configuration. The New Factory will offer exactly the same. We will send our installation/configuration plan. (The distributors are responsible for the installation and configuration).



HOW DOES THE PLATFORM WORK?
Transmission of information and data

We create link for the client, we make the configuration for the client. The customer switches and controls all smart products from the platform.

With the NVIDIA AI Jetson Box installed in each of our products, all components are controlled and data is saved.

We deliver our platform for city management or clients that allows:

- Visualize and analyze the sensors and smart components in real time and dynamically.
- Access multiple reports that allow defining and analyzing each smart components.
- Define and manage alarms to each sensor. Manage in real time the map of each product in the city.

We offer 3 options to choose from:

- **Basic Platform**
- **Premium Platform**
- **Full Platform**

Adlis Smart City AI Opteamizer/NVIDIA PPlatform

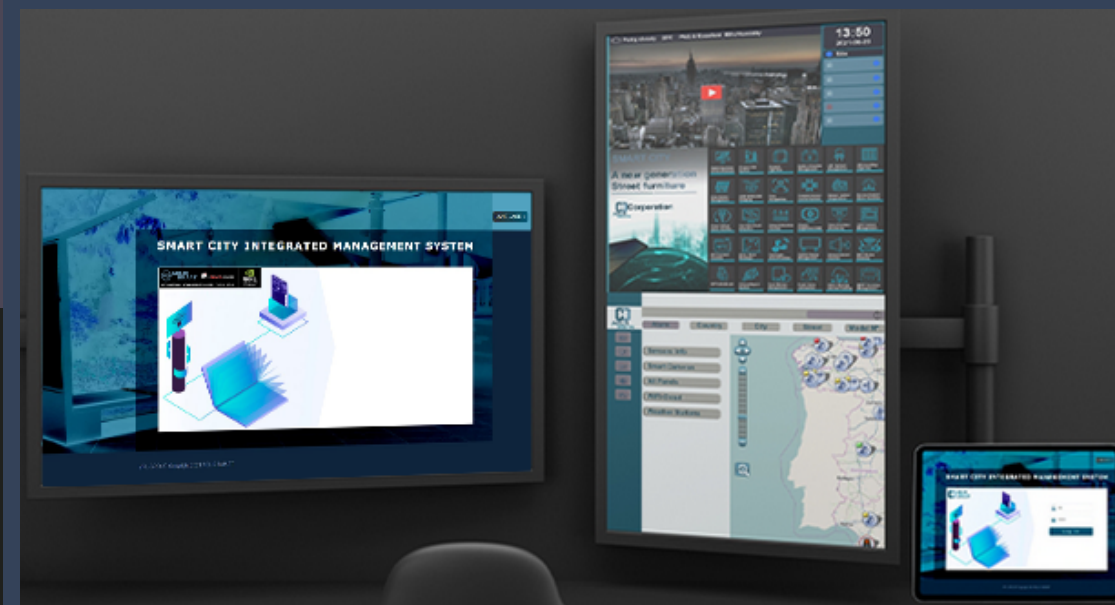
ADLIS CLOUD PLATFORM ADLIS HOSTING SERVER ADLIS SMART DATA

BIG DATA
ADVANCED ANALYTICS
AND VISUALIZATION

<https://adlissmart.com/SMARTCITY/>



The new factories will offer the installation service for Municipality, Institutions and Government projects. New factories will receive a complete installation plan for each product manufactured.



The new factories will have an office for our Smart City Platform with Data Cloud servers. All customers will be offered that service, and each new factory will be in charge of the configuration.

Manufacture New Factory

03

Maintenance/Warranty

The New Factory will meet the same maintenance standards as our main factory. The maintenance service will depend on the warranty and duration. We will send our maintenance plan when the warranty contract ends, with prices and services to offer to each customer. **(Distributors are responsible for maintenance and warranty).**



The maintenance offered will have 2 stages: During the duration of the Warranty with its conditions and services. When the Warranty ends, the new factories will offer a complete service with prices and services for all customers.



Our standard Warranty is included in all products manufactured by our company. The new factories will offer the same Warranty conditions to their customers.

Factory Timeline

2024 - Start (3 Month)

- Hire a company for legal procedures and company creation.
- Hire a comptability and finance company.
- Hire a Producer Manager
- Find and rent a warehouse to build the factory.
- Doron Asaraf, our Manager for Assembly Process, will begin creating the new factory and its development.
- Adlis SMart Design Department will create all the catalogs, documents necessary for the new factory.



2024 - 3 Month

- The comptability and finance company will deliver the financial plan for the new factory.
- Hire all the staff of the new factory.
- Create and set up the Showroom (Adlis Smart will send about 25 products).
- Adlis Smart will send each model that will be manufactured with the Assembly Process system and the team. Doron Asaraf will train and teach the new workers.
- Processing of all National and International certificates with the legal procedures company.
- Create and set up the department for Adlis Smart City AI Platform.
- Launch of the marketing campaign for the new factory (TV, Press, Magazine etc.)

2024 - 2 Month

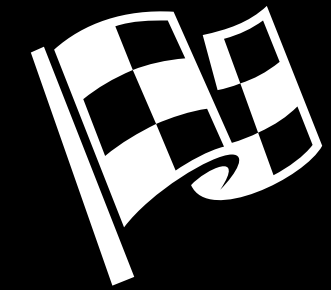
- Hire the Quality Control Manager.
- Set up the new quality control department and office.
- Delivery of the machines and tools, van and truck for the Assembly Process.
- Organization for storage of all components, spare for Assembly Process.
- Final assembly Process of all models received and quality control + Testing Report for internal evaluation.

2024 - 3 Month

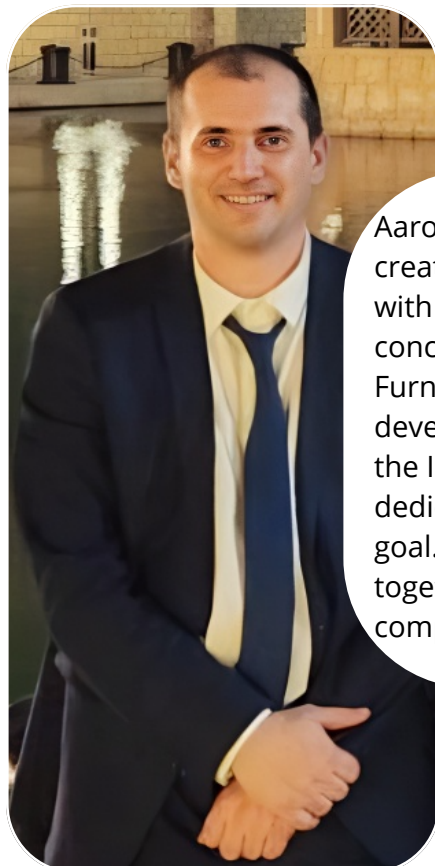
- Evaluation of the 5-days event with all the Managers of the new company together with the Adlis Smart team.
- Organization of new contacts, clients, orders and projects.
- New marketing campaign using the 5-days event, videos, photos, etc... both national and International together with Adlis Smart design department.
- Prepare and organize the first orders and signed projects.
- Manufacturing, Quality control, Testing report, shipping, installation

2024 - 1 Month

- The Ninth month will be dedicated exclusively to the Presentation of the new factory.
- Invitation of potential clients, both private and Municipalities, Institutions, governments, etc.
- Design and creation of the event "**Open Doors New Factory 2024**" (Duration: 5 days)
- Sending an invitation to all contacts for an open house event.
- Marketing campaign hiring a specialized company for the event (TV, Press, famous guests, and others)
- 5 days event "**Open Doors New Factory 2024**" - **Planning and Timing to be specified with the contracted company.**



2025



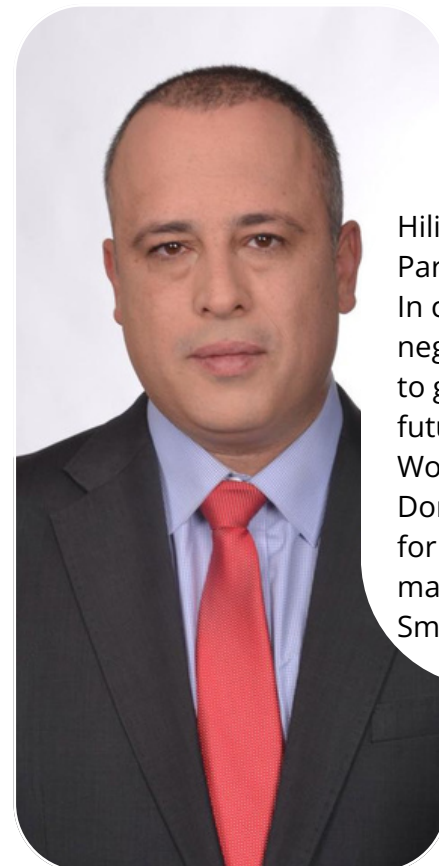
Aaron Donadey
CEO/FOUNDER

Aaron Donadey CEO & Founder, created the company in 2015 with the goal of changing the concept of Smart City Street Furniture. With Jane Wu, he developed a strategy working in the International market. Total dedication, he achieved his main goal. Create a better future, together with other people and companies.

To reinvent the future, we must all work together.

We Don't Make The Future, We Make The Future Better.

Aaron Donadey (CEO)



Yehiel "Hilik" Bar
Senior Investment Partner

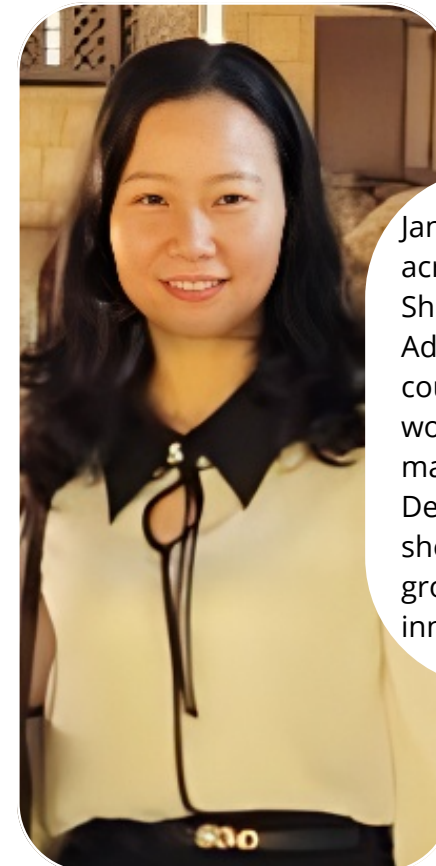
Hilik Bar is Senior Investment Partner of our entire company. In charge of obtaining and negotiating with new investors, to grow Adlis Smart for a better future.

Working together with Aaron Donadey (CEO of Adlis Smart) for potential investors, they managed to establish Adlis Smart as a leading company.

In business and in life, what matters is respect, human values and professional ethics.

The qualities you transmits every day, thank you for being who you are with gratitude and admiration.

Aaron Donadey (CEO)

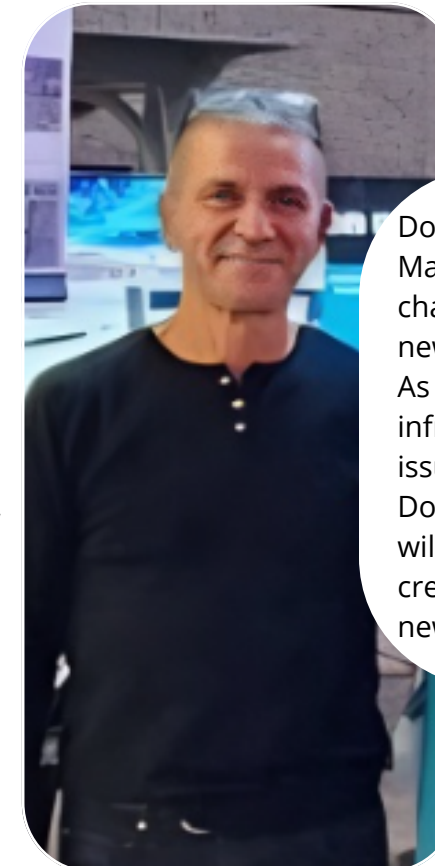


Jane Wu
Chief Business Development

Jane Wu is our Senior Director across our company. She, together with the CEO of Adlis Smart, changed the course, strategy and way of working in the International market 4 years ago. Dedication and professionalism, she achieved an evolution to grow a company with innovative products.

Thank you Jane for having that strength to make the impossible possible. Create a better future and everyone admires you for it, my respect and gratitude for always supporting me.

Aaron Donadey (CEO)



Doron Asaraf
Project Manager - Factory Assembly Process

Doron Asaraf is our Project Manager - Factory. Doron is in charge of all the parts to develop new factories in other countries. As well as designing its infrastructure, all the technical issues and training new workers. Doron with the technical team will move for a specific time to create and develop the entire new factory.

Respect for your help and support over the years are the pillars of our friendship. My respect to you with gratitude, admiration, affection and consideration.

Aaron Donadey (CEO)

THE BEST TEAM



Rami Einav

Project Manager Indian Market



Mori Asaraf

Manager Smart City IA Platform



Eli Kattan

Head of Special Projects



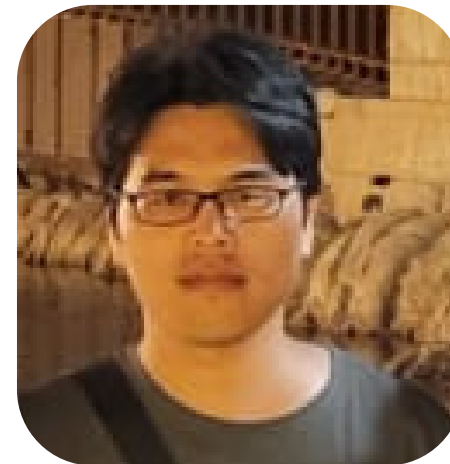
Ofir Levi

Civil Engineer



Romina Kattan

Office Manager



Jacky Fang

Assistant Manager AI Platform



Yuri Adler

Adlis Design Manager



Mor Schiffer

Architect Design Director



Interested Investors

For receive our Financial Information Mutual Non-Disclosure Agreement (NDA), contact:
Assembly-Process@adlissmart.com or Hilik@adlissmart.com

For more information about our Complet Financial Plan Factory 2024 (4 options), contact:
Assembly-Process@adlissmart.com

For more information about Complet Assembly Process Document Factory 2024 (4 options) contact:
Assembly-Process@adlissmart.com

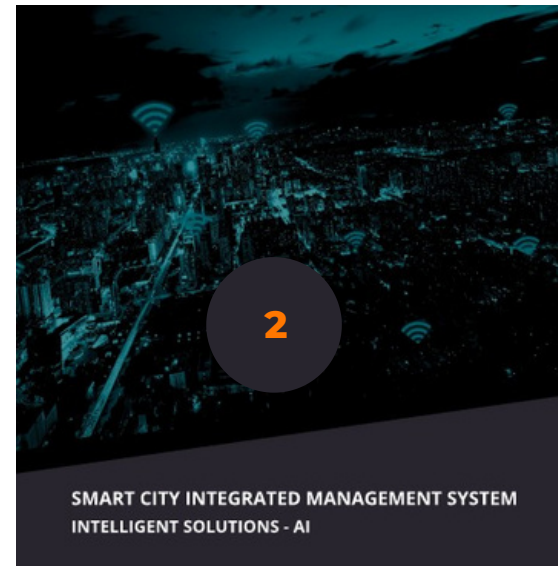
For more information about Complet Quality Control Document Factory 2024, contact:
QA@adlissmart.com

For more information about Complet Full Service Document Factory 2024, contact:
service@adlissmart.com

www.adlissmart.com



All Our Catalog



- 1 Full Catalogue: <https://adlissmart.com/FULLCATALOGUE>
- 2 Smart City Catalogue: <https://adlissmart.com/SMARTCITY/>
- 3 Adlis/Watergen Catalogue: <https://adlissmart.com/Watergen/>
- 4 Smart Cabin Catalogue: <https://adlissmart.com/Category/SMARTCABIN.pdf>
- 5 Smart Container Catalogue: [SMARTHOMECONTAINER.pdf](#)
- 5 Smart Indoor Catalogue: **UNDER CONSTRUCTION**

- 1 [Smart Bench Catalogue](#)
- 2 [Smart Table Catalogue](#)
- 3 [Smart Trash Catalogue](#)
- 4 [Smart Charger Catalogue](#)
- 5 [Smart Bus Catalogue:](#)
- 6 [Smart Beach Catalogue:](#)
- 7 [Smart Bike Charger Catalogue](#)
- 8 [Special Products Catalogue](#)
- 9 [Build Your Bench Catalogue](#)
- 10 [Solar Smart Box Catalogue](#)
- 11 [Solar Smart Advertising Catalogue](#)
- 12 [Solar Smart Light Catalogue](#)



Thank You!

A D L I S S M A R T B U S I N E S S P R E S E N T A T I O N

www.adlissmart.com

Assembly-Process@adlissmart.com