

NEW

2023-2024

ADLIS-WEIYIN CATALOGUE



ADLIS/WEIYIN CORP.

www.adlissmart.com

www.adlissmart.com/Marketing

expo.adlissmart.com

www.solarbenchchina.com

Sderot Moriah 104 Haifa

Asher 4 Kyriat Yam

2/F, Building E, Hengchangrong
Industrial Park, Pinghu Street,
Longgang District, Shenzhen City,
Guangdong Province, China

Name: Jane Wu

Phone: +8613823126631

Mail: sales@solarbenchchina.com

info@adlissmart.com

service@adlissmart.com

service@adlis.co.il

Adlis Smart Platform:

mori@adlissmart.com



About ADLIS-WEIYIN Corporation

The concept in the new technology is the future.
Simplicity of communication, individual solutions for customers.

Our concepts reflect our imagination and common sense.

We provide a wide range of services, Design 3D/AR/VR/CAD...

We create all the ideas, manufacturing our and your products.

We design prototypes, give us your idea and we create it.

Aaron Donadey
CEO of Adlis/Weiyin Corporation

www.adlissmart.com



ADLIS SMART STREET FURNITURE

ADLIS/WEIYIN CORP.

To reinvent the future,
we must all work
together.



ADLIS SMART HOME PRODUCT / APP



ADLIS SMART HOME CONTAINER / CABIN

OUR PRODUCTS

MAKING IDEA



PLANNING



DESIGNING



3D MODELING




MANUFACTURE



PROTOTYPING




Solar Smart Trash/Bin



Solar Smart Box




Solar Smart Bench



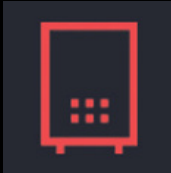
Solar Smart Table

Solar Smart Container

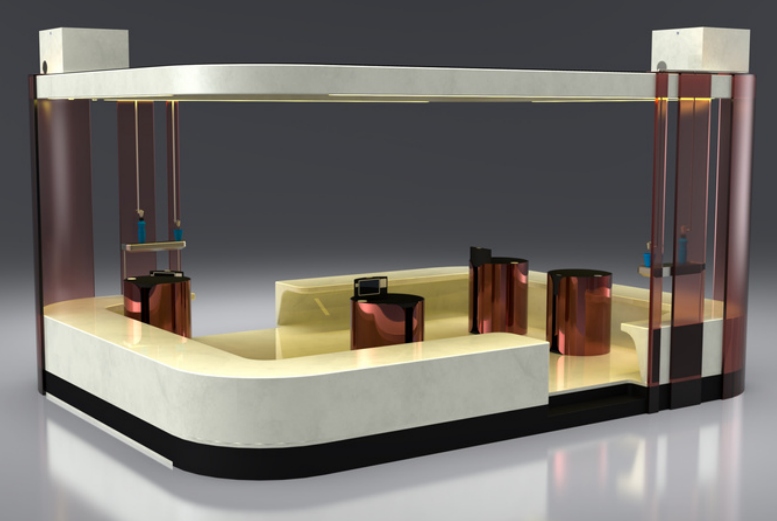


Special Products


Solar Smart Play



Build Your Bench



Solar Smart Charger



Solar Smart Beach



Smart Advertising



Smart Pergola



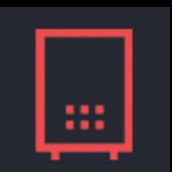
Solar Smart Light



Smart Indoor



Solar Smart Bus



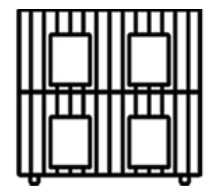
Solar Smart Bike



WE CREATE, MANUFACTURE & EVOLVE

Contact us and see all the benefits of working with ADLIS SMART.

It's not just doing business; it's being part of a group of people who care about their partners.



SMART CONTAINER



SMART FURNITURE



SOLAR SMART FURNITURE



SMART BOX



ADLIS PLATFORM



For more information about our AI NEW GEN Platform contact:
mori@adlissmart.com
Office@OpTeamizer.co.il

Leading and managing Solar Smart sustainable products that generate a positive impact for everyone. Join as Official Distributor to work together for a better future.

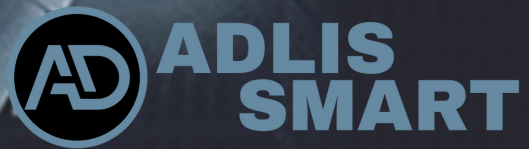
Chief Business Development

Jane Wu

sales@solarbenchchina.com

0086 13823126631





SMART
CITY

ADLIS
SMART



SMART CONTAINER



SMART FURNITURE



SOLAR SMART
FURNITURE



SMART BOX



ADLIS PLATFORM

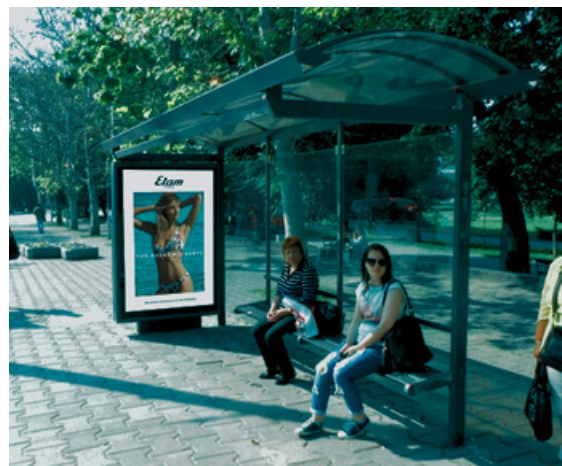
MAKE YOUR CITY THINK ON BEHALF OF YOU



SMART PLATFORM
SMART APP
NVIDIA AI JETSON BOX



SMART STREET FURNITURE
URBAN ZONES
STREET/PARK/PLACES
OUTDOOR/INDOOR



SMART BUS SHELTER



SMART KIOSK/CONTAINER

SMART CITY INTEGRATED MANAGEMENT SYSTEM

SMART CITY - AI



BIG DATA
ADVANCED ANALYTICS
AND VISUALIZATION

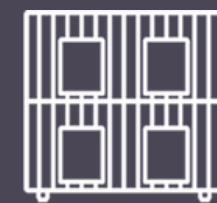
COMPUTER SYSTEM

Network System

DATA / CLOUD
SYSTEM



AI
NVIDIA
JETSON



SMART CONTAINER



SMART FURNITURE



SOLAR SMART
FURNITURE



SMART BOX



ADLIS PLATFORM

For more information about our AI NEW GEN Platform contact:

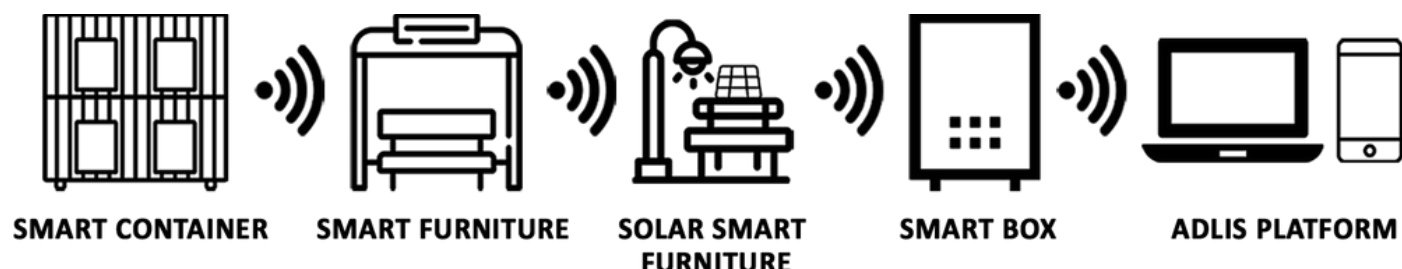
mori@adlissmart.com

Office@OpTeamizer.co.il



SOLAR SMART BENCH

WYC1802	WYC1817	WYC1902A	WYC1919
WYC1802C	WYC1817A	WYC1903	WYC1920
WYC1805	WYC1818	WYC1904	WYC1926
WYC1805A	WYC1820	WYC1908D	WYC1927
WYC1808	WYC1822	WYC1908G	WYC1928
WYC1808A	WYC1823	WYC1908H	WYC2021
WYC1809	WYC1825	WYC1909B	WYC2021A
WYC1809B	WYC1826	WYC1909C	WYC2001
WYC1813B	WYC1829	WYC1916	WYC2101
WYC1813C	WYC1830A	WYC1916A	WYC2101A
WYC1814	WYC1830B	WYC1916B	WYC2101B
WYC1815	WYC1835	WYC1916C	WYC2109
WYC1815A	WYC1855	WYC1917A	WYC2109A
WYC1816	WYC1901	WYC1917B	WYC2204
WYC1816A	WYC1902	WYC1918	



All our products can be customized to the client's request.

- Paint Colors
- USB
- wireless
- Wood color
- Router
- Advertising

And much more.

We can change the standard measurements of our products but it will have an extra cost for the artwork engineer.

Chief Business Development

Jane Wu

sales@solarbenchchina.com

0086 13823126631



For more information about our AI NEW GEN Platform contact:
mori@adlissmart.com
Office@OpTeamizer.co.il





Material: 201 stainless steel
Dimensions: L: 170cm / W: 45cm / H: 45cm
Solar panel: 90W
Battery capacity: 12V / 55AH
Controller type: MPPT
Estimated weight: 70kg
USB charging ports: 2
Wireless charging: 2 units
LED Strip Light: Warm White/White/RGBW
Advertising Optional: LED light box / LED display
Bluetooth speaker: 5/12V
4G International router

WYC1802

Standard Components Connected Only with NVIDIA AI JETSON

- | | |
|--|---|
| <ul style="list-style-type: none"> • Sensor Alarm • Motion Sensor • Sensor Temperature • Bluetooth Speaker • USB Charger • Wireless Charger • Solar Panel • MPPT Controller • Led Light • Battery • Router • LED SCREEN • GPS | Optional: <ul style="list-style-type: none"> • Sensor CO2, • Smart Voice Speaker • LED SCREEN • Digital Display • AC-DC Power Inverter • Camera • Cooling System • Trash Compactor Control • Desinfection • Network Notice • Voice broadcast • And More..... |
|--|---|



Material: 201 stainless steel
Dimensions: L: 170cm / W: 45cm / H: 45-90cm
Solar panel: 90W
Battery capacity: 12V / 55AH
Controller type: MPPT
Estimated weight: 70kg
USB charging ports: 2
Wireless charging: 2 units
LED Strip Light: Warm White/White/RGBW
Advertising Optional: LED light box / LED display
Bluetooth speaker: 5/12V
4G International router

WYC1805

Standard Components Connected Only with NVIDIA AI JETSON

- | | |
|--|---|
| <ul style="list-style-type: none"> • Sensor Alarm • Motion Sensor • Sensor Temperature • Bluetooth Speaker • USB Charger • Wireless Charger • Solar Panel • MPPT Controller • Led Light • Battery • Router • LED SCREEN • GPS | Optional: <ul style="list-style-type: none"> • Sensor CO2, • Smart Voice Speaker • LED SCREEN • Digital Display • AC-DC Power Inverter • Camera • Cooling System • Trash Compactor Control • Desinfection • Network Notice • Voice broadcast • And More..... |
|--|---|

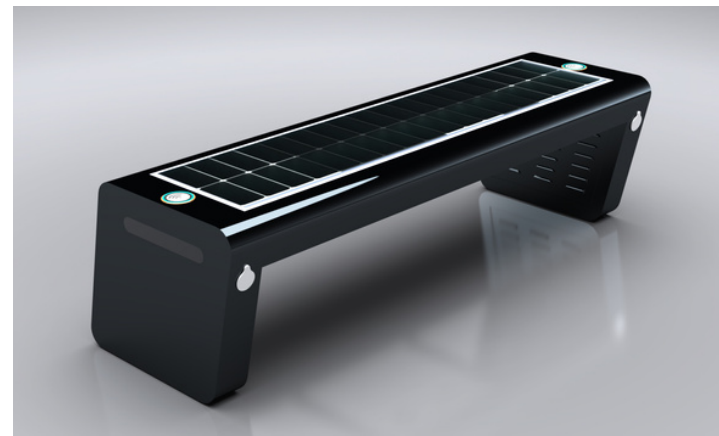


Material: 201 stainless steel + wood imitation paint
Dimensions: L: 170cm / W: 45cm / H: 45-83cm
Solar panel: 90W
Battery capacity: 12V / 55AH
Controller type: MPPT
Estimated weight: 70kg
USB charging ports: 2
Wireless charging: 2 units
LED Strip Light: Warm White/White/RGBW
Advertising Optional: LED light box / LED display
Bluetooth speaker: 5/12V
4G International router

WYC1802C

Standard Components Connected Only with NVIDIA AI JETSON

- | | |
|--|---|
| <ul style="list-style-type: none"> • Sensor Alarm • Motion Sensor • Sensor Temperature • Bluetooth Speaker • USB Charger • Wireless Charger • Solar Panel • MPPT Controller • Led Light • Battery • Router • LED SCREEN • GPS | Optional: <ul style="list-style-type: none"> • Sensor CO2, • Smart Voice Speaker • LED SCREEN • Digital Display • AC-DC Power Inverter • Camera • Cooling System • Trash Compactor Control • Desinfection • Network Notice • Voice broadcast • And More..... |
|--|---|

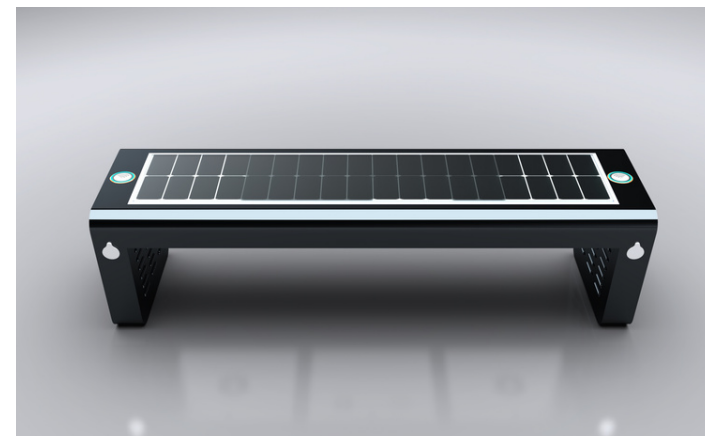


Material: 201 stainless steel
Dimensions: L: 170cm / W: 45cm / H: 55cm
Solar panel: 90W
Battery capacity: 12V / 55AH
Controller type: MPPT
Estimated weight: 70kg
USB charging ports: 2
Wireless charging: 2 units
LED Strip Light: Warm White/White/RGBW
Advertising Optional: LED light box / LED display
Bluetooth speaker: 5/12V
4G International router

WYC1805A

Standard Components Connected Only with NVIDIA AI JETSON

- | | |
|--|---|
| <ul style="list-style-type: none"> • Sensor Alarm • Motion Sensor • Sensor Temperature • Bluetooth Speaker • USB Charger • Wireless Charger • Solar Panel • MPPT Controller • Led Light • Battery • Router • LED SCREEN • GPS | Optional: <ul style="list-style-type: none"> • Sensor CO2, • Smart Voice Speaker • LED SCREEN • Digital Display • AC-DC Power Inverter • Camera • Cooling System • Trash Compactor Control • Desinfection • Network Notice • Voice broadcast • And More..... |
|--|---|





Material: 201 stainless steel + wood imitation paint

Dimensions: L: 170cm / W: 45cm / H: 45cm

Solar panel: 90W

Battery voltage: 12V

Battery capacity: 12V / 55AH

Controller type: MPPT

Estimated weight: 70kg

USB charging ports: 2

Wireless charging: 2 units

LED Strip Light: Warm White/White/RGBW

Advertising Optional: LED light box / LED display

Bluetooth speaker: 5/12V

4G International router

WYC1808

Standard Components Connected Only with NVIDIA AI JETSON

- Sensor Alarm
- Motion Sensor
- Sensor Temperature
- Bluetooth Speaker
- USB Charger
- Wireless Charger
- Solar Panel
- MPPT Controller
- Led Light
- Battery
- Router
- LED SCREEN
- GPS

Optional:

- Sensor CO2,
- Smart Voice Speaker
- LED SCREEN
- Digital Display
- AC-DC Power Inverter
- Camera
- Cooling System
- Trash Compactor Control
- Desinfection
- Network Notice
- Voice broadcast
- And More.....



Material: 201 stainless steel + WPC WOOD

Dimensions: L: 206cm / W: 55.5cm / H: 42cm

Solar panel: 107W

Battery capacity: 12V / 55AH

Controller type: MPPT

Estimated weight: 90kg

USB charging ports: 2

Wireless charging: 2 units

LED Strip Light: Warm White/White/RGBW

Advertising Optional: LED light box / LED display

Bluetooth speaker: 5/12V

4G International router

WYC1809

Standard Components Connected Only with NVIDIA AI JETSON

- Sensor Alarm
- Motion Sensor
- Sensor Temperature
- Bluetooth Speaker
- USB Charger
- Wireless Charger
- Solar Panel
- MPPT Controller
- Led Light
- Battery
- Router
- LED SCREEN
- GPS

Optional:

- Sensor CO2,
- Smart Voice Speaker
- LED SCREEN
- Digital Display
- AC-DC Power Inverter
- Camera
- Cooling System
- Trash Compactor Control
- Desinfection
- Network Notice
- Voice broadcast
- And More.....



Material: 201 stainless steel + WPC WOOD

Dimensions: L: 170cm / W: 45cm / H: 45cm

Solar panel: 50W

Battery capacity: 12V / 30AH

Controller type: MPPT

Estimated weight: 60kg

USB charging ports: 2

Wireless charging: 2 units

4G International router

WYC1808A

Standard Components Connected Only with NVIDIA AI JETSON

- Sensor Alarm
- Motion Sensor
- Sensor Temperature
- Bluetooth Speaker
- USB Charger
- Wireless Charger
- Solar Panel
- MPPT Controller
- Led Light
- Battery
- Router
- LED SCREEN
- GPS

Optional:

- Sensor CO2,
- Smart Voice Speaker
- LED SCREEN
- Digital Display
- AC-DC Power Inverter
- Camera
- Cooling System
- Trash Compactor Control
- Desinfection
- Network Notice
- Voice broadcast
- And More.....



Material: 201 stainless steel + WPC WOOD

Dimensions: L: 206cm / W: 55.5cm / H: 42/77cm

Solar panel: 107W

Battery capacity: 12V / 55AH

Controller type: MPPT

Estimated weight: 90kg

USB charging ports: 2

Wireless charging: 2 units

LED Strip Light: Warm White/White/RGBW

Advertising Optional: LED light box / LED display

Bluetooth speaker: 5/12V

4G International router

WYC1809B

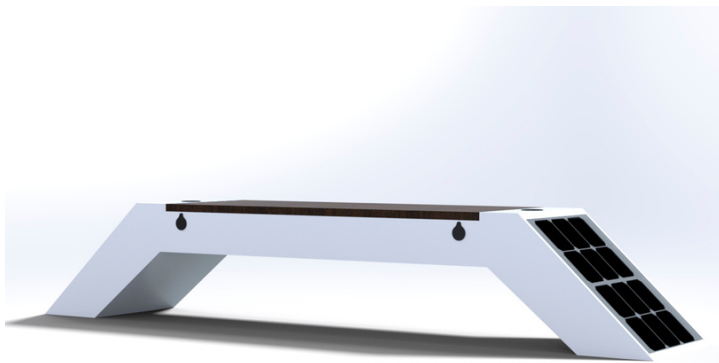
Standard Components Connected Only with NVIDIA AI JETSON

- Sensor Alarm
- Motion Sensor
- Sensor Temperature
- Bluetooth Speaker
- USB Charger
- Wireless Charger
- Solar Panel
- MPPT Controller
- Led Light
- Battery
- Router
- LED SCREEN
- GPS

Optional:

- Sensor CO2,
- Smart Voice Speaker
- LED SCREEN
- Digital Display
- AC-DC Power Inverter
- Camera
- Cooling System
- Trash Compactor Control
- Desinfection
- Network Notice
- Voice broadcast
- And More.....



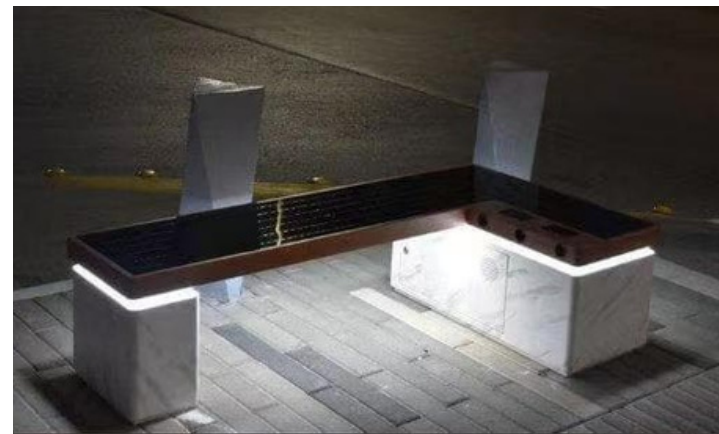


Material: 201 stainless steel + WPC WOOD
Dimensions: L: 270cm / W: 50cm / H: 47cm
Solar panel: 90W
Battery capacity: 12V / 55AH
Controller type: MPPT
Estimated weight: 70kg
USB charging ports: 4
Wireless charging: 2 units
LED Strip Light: Warm White/White/RGBW
Advertising Optional: LED light box / LED display
Bluetooth speaker: 5/12V
4G International router

WYC1813B

Standard Components Connected Only with NVIDIA AI JETSON

- | | |
|--|---|
| <ul style="list-style-type: none"> • Sensor Alarm • Motion Sensor • Sensor Temperature • Bluetooth Speaker • USB Charger • Wireless Charger • Solar Panel • MPPT Controller • Led Light • Battery • Router • LED SCREEN • GPS | Optional: <ul style="list-style-type: none"> • Sensor CO2, • Smart Voice Speaker • LED SCREEN • Digital Display • AC-DC Power Inverter • Camera • Cooling System • Trash Compactor Control • Desinfection • Network Notice • Voice broadcast • And More..... |
|--|---|

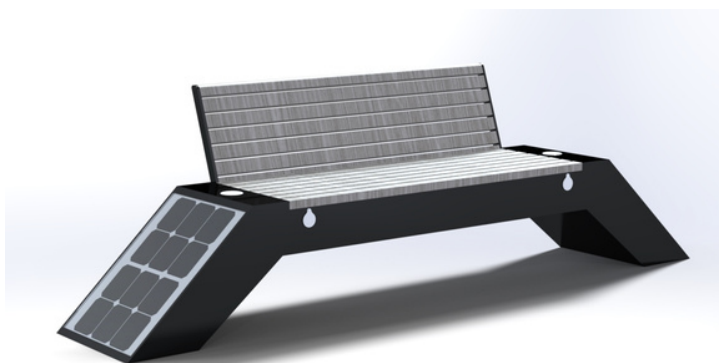


Material: 201 stainless steel + wood imitation paint
Dimensions: L: 170cm / W: 94cm / H: 45cm
Solar panel: 135W
Battery capacity: 12V / 55AH
Controller type: MPPT
Estimated weight: 80kg
USB charging ports: 3
Wireless charging: 2 units
LED Strip Light: Warm White/White/RGBW
Advertising Optional: LED light box / LED display
Bluetooth speaker: 5/12V
4G International router

WYC1814

Standard Components Connected Only with NVIDIA AI JETSON

- | | |
|--|---|
| <ul style="list-style-type: none"> • Sensor Alarm • Motion Sensor • Sensor Temperature • Bluetooth Speaker • USB Charger • Wireless Charger • Solar Panel • MPPT Controller • Led Light • Battery • Router • LED SCREEN • GPS | Optional: <ul style="list-style-type: none"> • Sensor CO2, • Smart Voice Speaker • LED SCREEN • Digital Display • AC-DC Power Inverter • Camera • Cooling System • Trash Compactor Control • Desinfection • Network Notice • Voice broadcast • And More..... |
|--|---|



Material: 201 stainless steel + WPC WOOD
Dimensions: L: 270cm / W: 50cm / H: 47-81cm
Solar panel: 90W
Battery capacity: 12V / 55AH
Controller type: MPPT
Estimated weight: 70kg
USB charging ports: 2
Wireless charging: 2 units
LED Strip Light: Warm White/White/RGBW
Advertising Optional: LED light box / LED display
Bluetooth speaker: 5/12V
4G International router

WYC1813C

Standard Components Connected Only with NVIDIA AI JETSON

- | | |
|--|---|
| <ul style="list-style-type: none"> • Sensor Alarm • Motion Sensor • Sensor Temperature • Bluetooth Speaker • USB Charger • Wireless Charger • Solar Panel • MPPT Controller • Led Light • Battery • Router • LED SCREEN • GPS | Optional: <ul style="list-style-type: none"> • Sensor CO2, • Smart Voice Speaker • LED SCREEN • Digital Display • AC-DC Power Inverter • Camera • Cooling System • Trash Compactor Control • Desinfection • Network Notice • Voice broadcast • And More..... |
|--|---|



Material: 201 stainless steel + WPC WOOD
Dimensions: L: 225cm / W: 112cm / H: 44/97cm
Solar panel: 121W
Battery capacity: 12V / 55AH
Controller type: MPPT
Estimated weight: 170kg
USB charging ports: 2
Wireless charging: 2 units
LED Strip Light: Warm White/White/RGBW
Advertising Optional: LED light box / LED display
Bluetooth speaker: 5/12V
4G International router

WYC1815

Standard Components Connected Only with NVIDIA AI JETSON

- | | |
|--|---|
| <ul style="list-style-type: none"> • Sensor Alarm • Motion Sensor • Sensor Temperature • Bluetooth Speaker • USB Charger • Wireless Charger • Solar Panel • MPPT Controller • Led Light • Battery • Router • LED SCREEN • GPS | Optional: <ul style="list-style-type: none"> • Sensor CO2, • Smart Voice Speaker • LED SCREEN • Digital Display • AC-DC Power Inverter • Camera • Cooling System • Trash Compactor Control • Desinfection • Network Notice • Voice broadcast • And More..... |
|--|---|



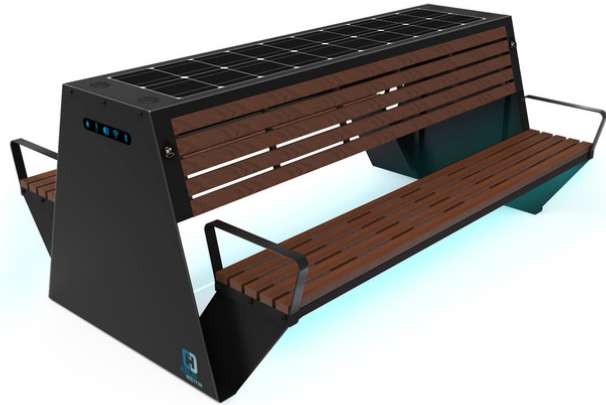


Material: 201 stainless steel + WPC WOOD
Dimensions: L: 225cm / W: 224cm / H: 44/97cm
Solar panel: 121W
Battery voltage: 12V
Battery capacity: 12V / 55AH
Controller type: MPPT
Estimated weight: 220kg
USB charging ports: 4
Wireless charging: 2 units
LED Strip Light: Warm White/White/RGBW
Advertising Optional: LED light box / LED display
Bluetooth speaker: 5/12V
4G International router

WYC1815A

Standard Components Connected Only with NVIDIA AI JETSON

- | | |
|--|---|
| <ul style="list-style-type: none"> • Sensor Alarm • Motion Sensor • Sensor Temperature • Bluetooth Speaker • USB Charger • Wireless Charger • Solar Panel • MPPT Controller • Led Light • Battery • Router • LED SCREEN • GPS | Optional: <ul style="list-style-type: none"> • Sensor CO2, • Smart Voice Speaker • LED SCREEN • Digital Display • AC-DC Power Inverter • Camera • Cooling System • Trash Compactor Control • Desinfection • Network Notice • Voice broadcast • And More..... |
|--|---|



Material: 201 stainless steel
Dimensions: L: 200cm / W: 50cm / H: 45/73cm
Solar panel: 90W
Battery capacity: 12V / 55AH
Controller type: MPPT
Estimated weight: 80kg
USB charging ports: 2
Wireless charging: 2 units
LED Strip Light: Warm White/White/RGBW
Bluetooth speaker: 5/12V
4G International router

WYC1816A

Standard Components Connected Only with NVIDIA AI JETSON

- | | |
|--|---|
| <ul style="list-style-type: none"> • Sensor Alarm • Motion Sensor • Sensor Temperature • Bluetooth Speaker • USB Charger • Wireless Charger • Solar Panel • MPPT Controller • Led Light • Battery • Router • LED SCREEN • GPS | Optional: <ul style="list-style-type: none"> • Sensor CO2, • Smart Voice Speaker • LED SCREEN • Digital Display • AC-DC Power Inverter • Camera • Cooling System • Trash Compactor Control • Desinfection • Network Notice • Voice broadcast • And More..... |
|--|---|

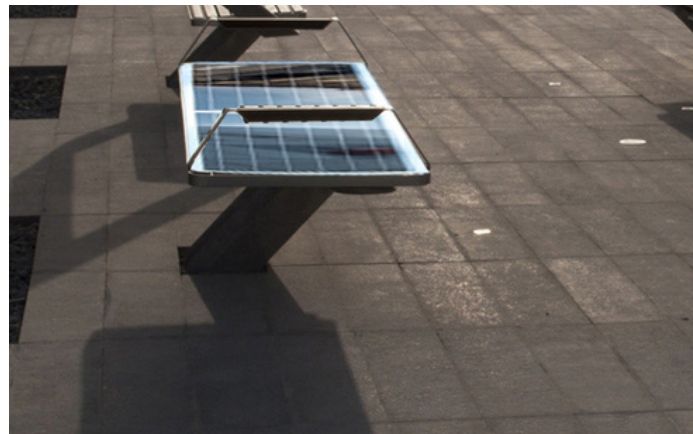


Material: 201 stainless steel
Dimensions: L: 200cm / W: 50cm / H: 45cm
Solar panel: 90W
Battery capacity: 12V / 55AH
Controller type: MPPT
Estimated weight: 80kg
USB charging ports: 2
Wireless charging: 2 units
LED Strip Light: Warm White/White/RGBW
Bluetooth speaker: 5/12V
4G International router

WYC1816

Standard Components Connected Only with NVIDIA AI JETSON

- | | |
|--|---|
| <ul style="list-style-type: none"> • Sensor Alarm • Motion Sensor • Sensor Temperature • Bluetooth Speaker • USB Charger • Wireless Charger • Solar Panel • MPPT Controller • Led Light • Battery • Router • LED SCREEN • GPS | Optional: <ul style="list-style-type: none"> • Sensor CO2, • Smart Voice Speaker • LED SCREEN • Digital Display • AC-DC Power Inverter • Camera • Cooling System • Trash Compactor Control • Desinfection • Network Notice • Voice broadcast • And More..... |
|--|---|

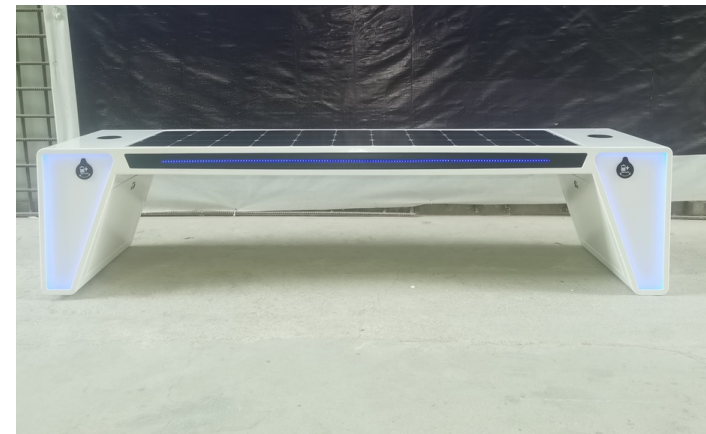


Material: 201 stainless steel
Dimensions: L: 200cm / W: 45cm / H: 45cm
Solar panel: 110W
Battery capacity: 12V / 55AH
Controller type: MPPT
Estimated weight: 70kg
USB charging ports: 2
Wireless charging: 2 units
LED Strip Light: Warm White/White/RGBW
Advertising Optional: LED light box / LED display
Bluetooth speaker: 5/12V
4G International router

WYC1817

Standard Components Connected Only with NVIDIA AI JETSON

- | | |
|--|---|
| <ul style="list-style-type: none"> • Sensor Alarm • Motion Sensor • Sensor Temperature • Bluetooth Speaker • USB Charger • Wireless Charger • Solar Panel • MPPT Controller • Led Light • Battery • Router • LED SCREEN • GPS | Optional: <ul style="list-style-type: none"> • Sensor CO2, • Smart Voice Speaker • LED SCREEN • Digital Display • AC-DC Power Inverter • Camera • Cooling System • Trash Compactor Control • Desinfection • Network Notice • Voice broadcast • And More..... |
|--|---|





Material: 201 stainless steel + WPC WOOD
Dimensions: L: 200cm / W: 45cm / H: 45/75cm
Solar panel: 110W
Battery voltage: 12V
Battery capacity: 55AH
Controller type: MPPT
Estimated weight: 80kg
USB charging ports: 2
Wireless charging: 5V/2.1A
Wireless charging: 2 units
LED Strip Light: Warm White/White/RGBW
Advertising Optional: LED light box / LED display
Bluetooth speaker: 5/12V
4G International router

WYC1817A

Standard Components Connected Only with NVIDIA AI JETSON

- | | |
|--|---|
| <ul style="list-style-type: none"> • Sensor Alarm • Motion Sensor • Sensor Temperature • Bluetooth Speaker • USB Charger • Wireless Charger • Solar Panel • MPPT Controller • Led Light • Battery • Router • LED SCREEN • GPS | Optional: <ul style="list-style-type: none"> • Sensor CO2, • Smart Voice Speaker • LED SCREEN • Digital Display • AC-DC Power Inverter • Camera • Cooling System • Trash Compactor Control • Desinfection • Network Notice • Voice broadcast • And More..... |
|--|---|

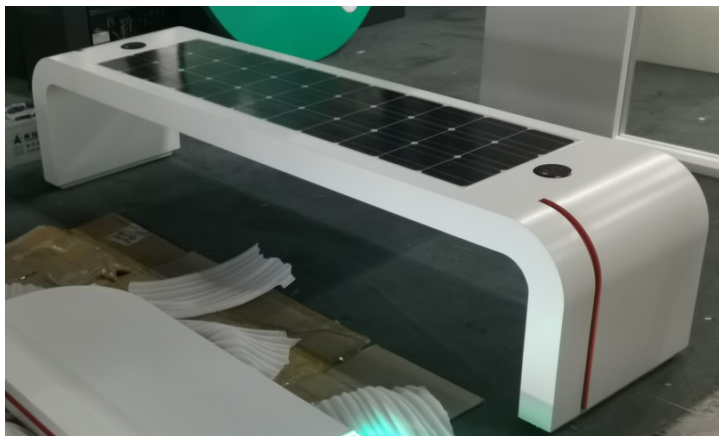


Material: 201 stainless steel
Dimensions: L: 180cm / W: 50cm / H: 42/65cm
Solar panel: 90W
Battery capacity: 12V / 55AH
Controller type: MPPT
Estimated weight: 60kg
USB charging ports: 2
Wireless charging: 2 units
LED Strip Light: Warm White/White/RGBW
Bluetooth speaker: 5/12V
4G International router

WYC1820

Standard Components Connected Only with NVIDIA AI JETSON

- | | |
|--|---|
| <ul style="list-style-type: none"> • Sensor Alarm • Motion Sensor • Sensor Temperature • Bluetooth Speaker • USB Charger • Wireless Charger • Solar Panel • MPPT Controller • Led Light • Battery • Router • LED SCREEN • GPS | Optional: <ul style="list-style-type: none"> • Sensor CO2, • Smart Voice Speaker • LED SCREEN • Digital Display • AC-DC Power Inverter • Camera • Cooling System • Trash Compactor Control • Desinfection • Network Notice • Voice broadcast • And More..... |
|--|---|

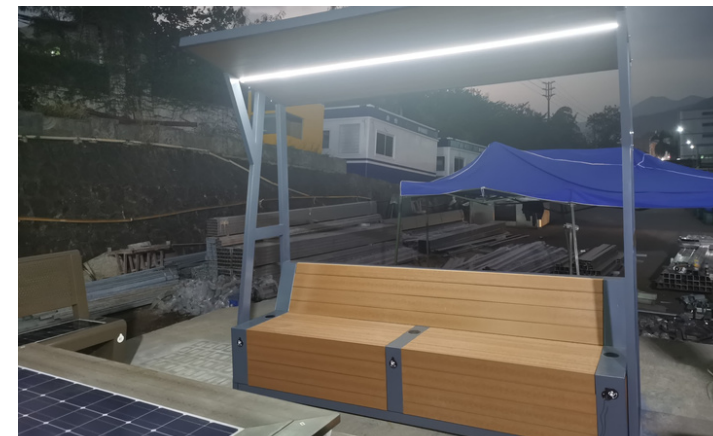
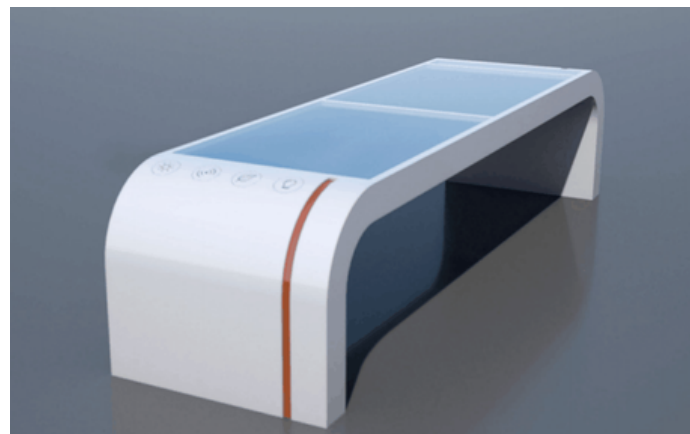


Material: 201 stainless steel
Dimensions: L: 170cm / W: 50cm / H: 45cm
Solar panel: 90W
Battery capacity: 12V / 55AH
Controller type: MPPT
Estimated weight: 80kg
USB charging ports: 2
Wireless charging: 2 units
LED Strip Light: Warm White/White/RGBW
Advertising Optional: LED light box / LED display
Bluetooth speaker: 5/12V
4G International router

WYC1818

Standard Components Connected Only with NVIDIA AI JETSON

- | | |
|--|---|
| <ul style="list-style-type: none"> • Sensor Alarm • Motion Sensor • Sensor Temperature • Bluetooth Speaker • USB Charger • Wireless Charger • Solar Panel • MPPT Controller • Led Light • Battery • Router • LED SCREEN • GPS | Optional: <ul style="list-style-type: none"> • Sensor CO2, • Smart Voice Speaker • LED SCREEN • Digital Display • AC-DC Power Inverter • Camera • Cooling System • Trash Compactor Control • Desinfection • Network Notice • Voice broadcast • And More..... |
|--|---|



Material: 201 stainless steel + WPC WOOD
Dimensions: L: 251cm / W: 108cm / H: 45/79/236cm
Solar panel: 226W
Battery capacity: 12V / 85AH
Controller type: MPPT
Estimated weight: 80kg
USB charging ports: 3
Wireless charging: 3 units
LED Strip Light: Warm White/White/RGBW
Bluetooth speaker: 5/12V
4G International router

WYC1822

Standard Components Connected Only with NVIDIA AI JETSON

- | | |
|--|---|
| <ul style="list-style-type: none"> • Sensor Alarm • Motion Sensor • Sensor Temperature • Bluetooth Speaker • USB Charger • Wireless Charger • Solar Panel • MPPT Controller • Led Light • Battery • Router • LED SCREEN • GPS | Optional: <ul style="list-style-type: none"> • Sensor CO2, • Smart Voice Speaker • LED SCREEN • Digital Display • AC-DC Power Inverter • Camera • Cooling System • Trash Compactor Control • Desinfection • Network Notice • Voice broadcast • And More..... |
|--|---|





Material: 201 stainless steel + wood imitation paint
Dimensions: L: 246cm / W: 55cm / H: 47cm
Solar panel: 195W
Battery capacity: 12V / 55AH
Controller type: MPPT
Estimated weight: 80kg
USB charging ports: 2
Wireless charging: 2 units
LED Strip Light: Warm White/White/RGBW
Bluetooth speaker: 5/12V
4G International router



WYC1823

Standard Components Connected Only with NVIDIA AI JETSON

- | | |
|--|---|
| <ul style="list-style-type: none"> • Sensor Alarm • Motion Sensor • Sensor Temperature • Bluetooth Speaker • USB Charger • Wireless Charger • Solar Panel • MPPT Controller • Led Light • Battery • Router • LED SCREEN • GPS | Optional: <ul style="list-style-type: none"> • Sensor CO2, • Smart Voice Speaker • LED SCREEN • Digital Display • AC-DC Power Inverter • Camera • Cooling System • Trash Compactor Control • Desinfection • Network Notice • Voice broadcast • And More..... |
|--|---|



Material: 201 stainless steel + WPC WOOD
Dimensions: L: 195cm / W: 80cm / H: 36/110cm
Solar panel: 54W
Battery capacity: 12V / 55AH
Controller type: MPPT
Estimated weight: 80kg
USB charging ports: 2
Wireless charging: 1 units
LED Strip Light: Warm White/White/RGBW



WYC1826

Standard Components Connected Only with NVIDIA AI JETSON

- | | |
|--|---|
| <ul style="list-style-type: none"> • Sensor Alarm • Motion Sensor • Sensor Temperature • Bluetooth Speaker • USB Charger • Wireless Charger • Solar Panel • MPPT Controller • Led Light • Battery • Router • LED SCREEN • GPS | Optional: <ul style="list-style-type: none"> • Sensor CO2, • Smart Voice Speaker • LED SCREEN • Digital Display • AC-DC Power Inverter • Camera • Cooling System • Trash Compactor Control • Desinfection • Network Notice • Voice broadcast • And More..... |
|--|---|



Material: 201 stainless steel
Dimensions: L: 200cm / W: 55cm / H: 45cm
Solar panel: 90W
Battery capacity: 12V / 55AH
Controller type: MPPT
Estimated weight: 90kg
USB charging ports: 2
Wireless charging: 2 units
LED Strip Light: Warm White/White/RGBW
Bluetooth speaker: 5/12V
4G International router



WYC1825

Standard Components Connected Only with NVIDIA AI JETSON

- | | |
|--|---|
| <ul style="list-style-type: none"> • Sensor Alarm • Motion Sensor • Sensor Temperature • Bluetooth Speaker • USB Charger • Wireless Charger • Solar Panel • MPPT Controller • Led Light • Battery • Router • LED SCREEN • GPS | Optional: <ul style="list-style-type: none"> • Sensor CO2, • Smart Voice Speaker • LED SCREEN • Digital Display • AC-DC Power Inverter • Camera • Cooling System • Trash Compactor Control • Desinfection • Network Notice • Voice broadcast • And More..... |
|--|---|



Material: 201 stainless steel
Dimensions: L: 225cm / W: 54cm / H: 44/73cm
Solar panel: 92W
Battery capacity: 12V / 55AH
Controller type: MPPT
Estimated weight: 90kg
USB charging ports: 2
Wireless charging: 2 units
LED Strip Light: Warm White/White/RGBW
Bluetooth speaker: 5/12V
4G International router



WYC1829

Standard Components Connected Only with NVIDIA AI JETSON

- | | |
|--|---|
| <ul style="list-style-type: none"> • Sensor Alarm • Motion Sensor • Sensor Temperature • Bluetooth Speaker • USB Charger • Wireless Charger • Solar Panel • MPPT Controller • Led Light • Battery • Router • LED SCREEN • GPS | Optional: <ul style="list-style-type: none"> • Sensor CO2, • Smart Voice Speaker • LED SCREEN • Digital Display • AC-DC Power Inverter • Camera • Cooling System • Trash Compactor Control • Desinfection • Network Notice • Voice broadcast • And More..... |
|--|---|

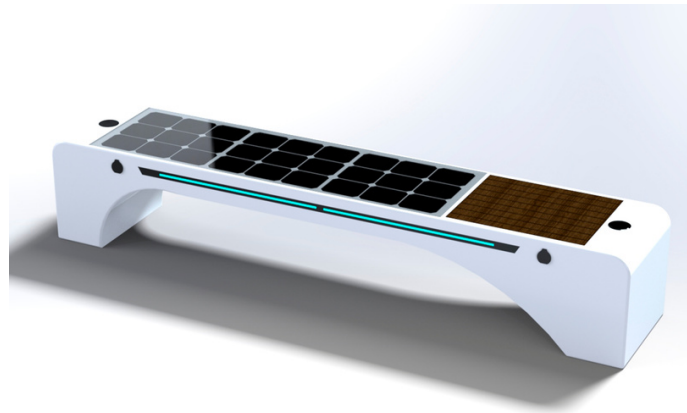


Material: 201 stainless steel + WPC WOOD
Dimensions: L: 230cm / W: 45cm / H: 42cm
Solar panel: 90W
Battery capacity: 12V / 55AH
Controller type: MPPT
Estimated weight: 110kg
USB charging ports: 2
Wireless charging: 2 units
LED Strip Light: Warm White/White/RGBW
Advertising Optional: LED light box / LED display
Bluetooth speaker: 5/12V
4G International router

WYC1830A

Standard Components Connected Only with NVIDIA AI JETSON

- | | |
|--|---|
| <ul style="list-style-type: none"> • Sensor Alarm • Motion Sensor • Sensor Temperature • Bluetooth Speaker • USB Charger • Wireless Charger • Solar Panel • MPPT Controller • Led Light • Battery • Router • LED SCREEN • GPS | Optional: <ul style="list-style-type: none"> • Sensor CO2, • Smart Voice Speaker • LED SCREEN • Digital Display • AC-DC Power Inverter • Camera • Cooling System • Trash Compactor Control • Desinfection • Network Notice • Voice broadcast • And More..... |
|--|---|

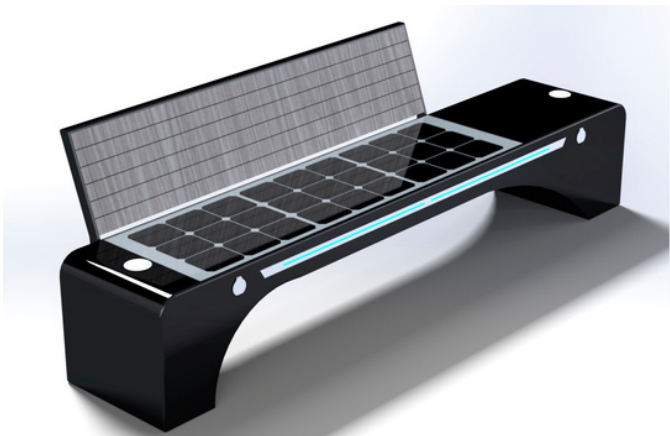


Material: 201 stainless steel + WPC WOOD
Dimensions: L: 215cm / W: 60cm / H: 44/79cm
Solar panel: 60W
Battery capacity: 12V / 55AH
Controller type: MPPT
Estimated weight: 80kg
USB charging ports: 2
Wireless charging: 2 units
LED Strip Light: Warm White/White/RGBW
Bluetooth speaker: 5/12V
4G International router

WYC1835

Standard Components Connected Only with NVIDIA AI JETSON

- | | |
|--|---|
| <ul style="list-style-type: none"> • Sensor Alarm • Motion Sensor • Sensor Temperature • Bluetooth Speaker • USB Charger • Wireless Charger • Solar Panel • MPPT Controller • Led Light • Battery • Router • LED SCREEN • GPS | Optional: <ul style="list-style-type: none"> • Sensor CO2, • Smart Voice Speaker • LED SCREEN • Digital Display • AC-DC Power Inverter • Camera • Cooling System • Trash Compactor Control • Desinfection • Network Notice • Voice broadcast • And More..... |
|--|---|

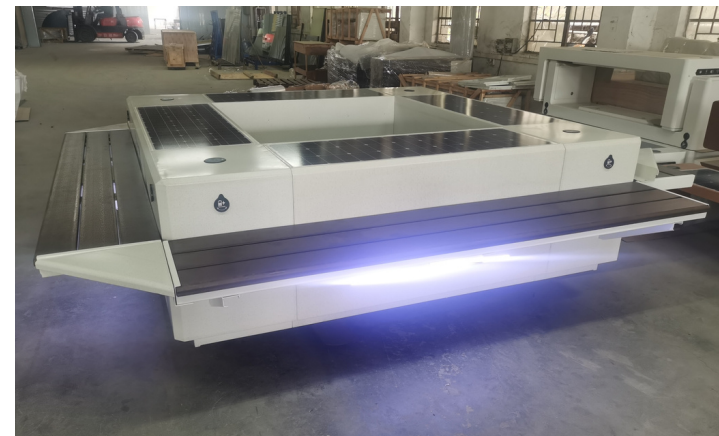
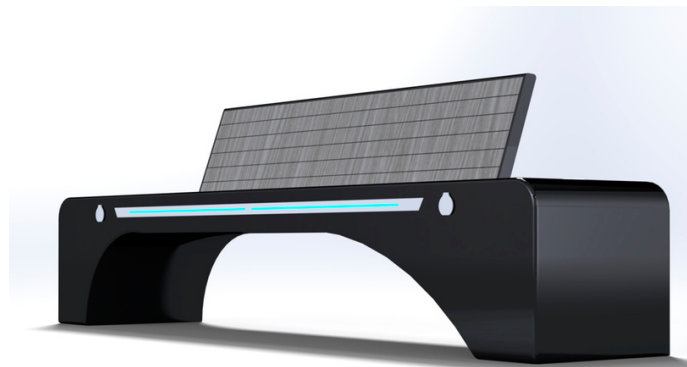


Material: 201 stainless steel + WPC WOOD
Dimensions: L: 230cm / W: 45cm / H: 42/77cm
Solar panel: 90W
Battery capacity: 12V / 55AH
Controller type: MPPT
Estimated weight: 110kg
USB charging ports: 2
Wireless charging: 2 units
LED Strip Light: Warm White/White/RGBW
Advertising Optional: LED light box / LED display
Bluetooth speaker: 5/12V
4G International router

WYC1830B

Standard Components Connected Only with NVIDIA AI JETSON

- | | |
|--|---|
| <ul style="list-style-type: none"> • Sensor Alarm • Motion Sensor • Sensor Temperature • Bluetooth Speaker • USB Charger • Wireless Charger • Solar Panel • MPPT Controller • Led Light • Battery • Router • LED SCREEN • GPS | Optional: <ul style="list-style-type: none"> • Sensor CO2, • Smart Voice Speaker • LED SCREEN • Digital Display • AC-DC Power Inverter • Camera • Cooling System • Trash Compactor Control • Desinfection • Network Notice • Voice broadcast • And More..... |
|--|---|



New generation bench with smart system integrated and smart hydraulic irrigation system.
Material: 201 stainless steel + WPC WOOD
Dimensions: L: 290cm / W: 290cm / H: 67cm
Solar panel: 360W
Battery capacity: 12V / 200AH
Controller type: MPPT
Estimated weight: 270kg
USB charging ports: 8
Wireless charging: 4 units
LED Spot Light: Warm White/White/RGBW
Bluetooth speaker: 5/12V
4G International router

WYC1855

Standard Components Connected Only with NVIDIA AI JETSON

- | | |
|--|---|
| <ul style="list-style-type: none"> • Sensor Alarm • Motion Sensor • Sensor Temperature • Bluetooth Speaker • USB Charger • Wireless Charger • Solar Panel • MPPT Controller • Led Light • Battery • Router • LED SCREEN • GPS | Optional: <ul style="list-style-type: none"> • Sensor CO2, • Smart Voice Speaker • LED SCREEN • Digital Display • AC-DC Power Inverter • Camera • Cooling System • Trash Compactor Control • Desinfection • Network Notice • Voice broadcast • And More..... |
|--|---|





Material: 201 stainless steel
Dimensions: L: 200cm / W: 55cm / H: 45cm
Solar panel: 90W
Battery capacity: 12V / 55AH
Controller type: MPPT
Estimated weight: 80kg
USB charging ports: 4
Wireless charging: 1units
LED Strip Light: Warm White/White/RGBW
Advertising Optional: LED light box / LED display
Bluetooth speaker: 5/12V
4G International router



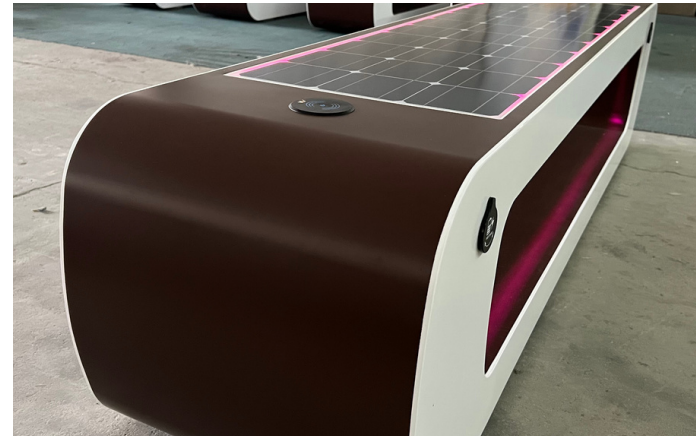
WYC1901

Standard Components Connected Only with NVIDIA AI JETSON

- | | |
|--|---|
| <ul style="list-style-type: none"> • Sensor Alarm • Motion Sensor • Sensor Temperature • Bluetooth Speaker • USB Charger • Wireless Charger • Solar Panel • MPPT Controller • Led Light • Battery • Router • LED SCREEN • GPS | Optional: <ul style="list-style-type: none"> • Sensor CO2, • Smart Voice Speaker • LED SCREEN • Digital Display • AC-DC Power Inverter • Camera • Cooling System • Trash Compactor Control • Desinfection • Network Notice • Voice broadcast • And More..... |
|--|---|



Material: 201 stainless steel + WPC WOOD
Dimensions: L: 180cm / W: 46cm / H: 48cm
Solar panel: 90W
Battery capacity: 12V / 55AH
Controller type: MPPT
Estimated weight: 70kg
USB charging ports: 4
Wireless charging: 2 units
LED Strip Light: Warm White/White/RGBW
Advertising Optional: LED light box / LED display
Bluetooth speaker: 5/12V
4G International router



WYC1902A

Standard Components Connected Only with NVIDIA AI JETSON

- | | |
|--|---|
| <ul style="list-style-type: none"> • Sensor Alarm • Motion Sensor • Sensor Temperature • Bluetooth Speaker • USB Charger • Wireless Charger • Solar Panel • MPPT Controller • Led Light • Battery • Router • LED SCREEN • GPS | Optional: <ul style="list-style-type: none"> • Sensor CO2, • Smart Voice Speaker • LED SCREEN • Digital Display • AC-DC Power Inverter • Camera • Cooling System • Trash Compactor Control • Desinfection • Network Notice • Voice broadcast • And More..... |
|--|---|



Material: 201 stainless steel + WPC WOOD
Dimensions: L: 180cm / W: 46cm / H: 48cm
Solar panel: 90W
Battery capacity: 12V / 55AH
Controller type: MPPT
Estimated weight: 70kg
USB charging ports: 4
Wireless charging: 2 units
LED Strip Light: Warm White/White/RGBW
Advertising Optional: LED light box / LED display
Bluetooth speaker: 5/12V
4G International router



WYC1902

Standard Components Connected Only with NVIDIA AI JETSON

- | | |
|--|---|
| <ul style="list-style-type: none"> • Sensor Alarm • Motion Sensor • Sensor Temperature • Bluetooth Speaker • USB Charger • Wireless Charger • Solar Panel • MPPT Controller • Led Light • Battery • Router • LED SCREEN • GPS | Optional: <ul style="list-style-type: none"> • Sensor CO2, • Smart Voice Speaker • LED SCREEN • Digital Display • AC-DC Power Inverter • Camera • Cooling System • Trash Compactor Control • Desinfection • Network Notice • Voice broadcast • And More..... |
|--|---|



Dimensions: L- 181cm, W- 55cm, H- 45/73cm
Solar Panel: 90W
Battery capacity: 12V / 55AH
Controller Type: MPPT
Weight: estimated 60kg
USB charging: 2
Wireless charging: 2
Ambient light: LED strip RGBW/Warm White
Bluetooth speaker: 5/12V
Wi-Fi: 4G/International router



WYC1903A

Standard Components Connected Only with NVIDIA AI JETSON

- | | |
|--|---|
| <ul style="list-style-type: none"> • Sensor Alarm • Motion Sensor • Sensor Temperature • Bluetooth Speaker • USB Charger • Wireless Charger • Solar Panel • MPPT Controller • Led Light • Battery • Router • LED SCREEN • GPS | Optional: <ul style="list-style-type: none"> • Sensor CO2, • Smart Voice Speaker • LED SCREEN • Digital Display • AC-DC Power Inverter • Camera • Cooling System • Trash Compactor Control • Desinfection • Network Notice • Voice broadcast • And More..... |
|--|---|

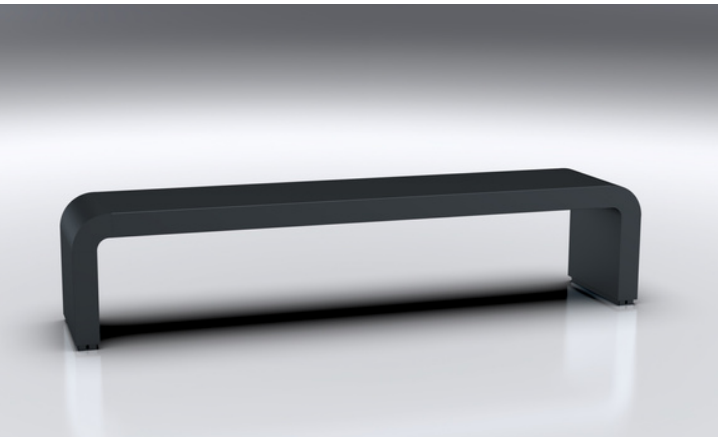


Material: 201 stainless steel + WPC WOOD
Dimensions: L: 170cm / W: 45cm / H: 45cm
Solar panel: 90W
Battery capacity: 12V / 55AH
Controller type: MPPT
Estimated weight: 70kg
USB charging ports: 2
Wireless charging: 2 units
LED Strip Light: Warm White/White/RGBW
Bluetooth speaker: 5/12V
4G International router

WYC1904

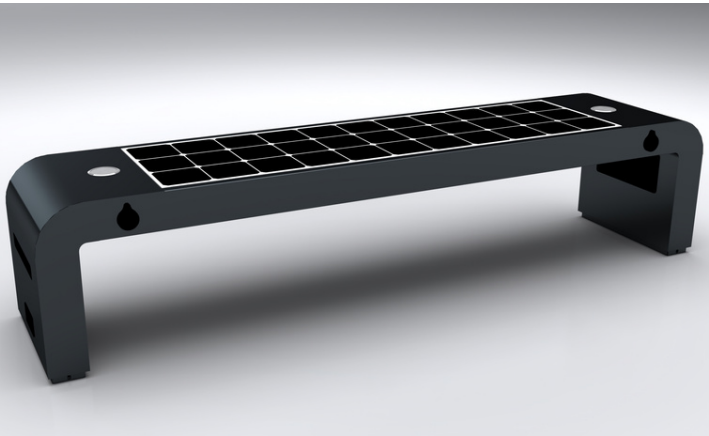
Standard Components Connected Only with NVIDIA AI JETSON

- | | |
|--|---|
| <ul style="list-style-type: none"> • Sensor Alarm • Motion Sensor • Sensor Temperature • Bluetooth Speaker • USB Charger • Wireless Charger • Solar Panel • MPPT Controller • Led Light • Battery • Router • LED SCREEN • GPS | Optional: <ul style="list-style-type: none"> • Sensor CO2, • Smart Voice Speaker • LED SCREEN • Digital Display • AC-DC Power Inverter • Camera • Cooling System • Trash Compactor Control • Desinfection • Network Notice • Voice broadcast • And More..... |
|--|---|



Material: 201 stainless steel
Dimensions: L: 204cm / W: 45cm / H: 45cm
Estimated weight: 80kg

WYC1908E

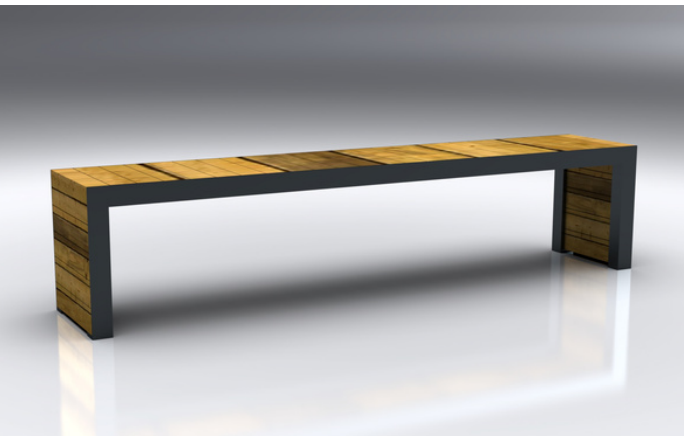


Material: 201 stainless steel
Dimensions: L: 204cm / W: 45cm / H: 45cm
Solar panel: 90W
Battery capacity: 12V / 55AH
Controller type: MPPT
Estimated weight: 80kg
USB charging ports: 2
Wireless charging: 2 units
LED Strip Light: Warm White/White/RGBW
Advertising: Led light Box/Led Screen Optional
Bluetooth speaker: 5/12V
4G International router

WYC1908D

Standard Components Connected Only with NVIDIA AI JETSON

- | | |
|--|---|
| <ul style="list-style-type: none"> • Sensor Alarm • Motion Sensor • Sensor Temperature • Bluetooth Speaker • USB Charger • Wireless Charger • Solar Panel • MPPT Controller • Led Light • Battery • Router • LED SCREEN • GPS | Optional: <ul style="list-style-type: none"> • Sensor CO2, • Smart Voice Speaker • LED SCREEN • Digital Display • AC-DC Power Inverter • Camera • Cooling System • Trash Compactor Control • Desinfection • Network Notice • Voice broadcast • And More..... |
|--|---|



Material: 201 stainless steel + WPC WOOD
Dimensions: L-204cm / W: 45cm / H:45cm
Estimated weight: 80kg

WYC1908F





WYC1908G

Material: 201 stainless steel + WPC WOOD
 Dimensions: L: 204cm / W: 55cm / H: 45-80cm
 Estimated weight: 90kg

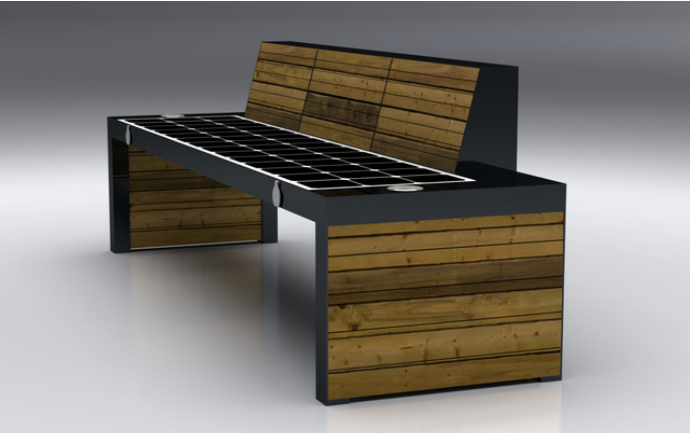


WYC1909C

Material: 201 stainless steel + WPC WOOD
 Dimensions: L: 204cm / W: 55cm / H: 45-80cm
 Solar panel: 90W
 Battery capacity: 12V / 55AH
 Controller type: MPPT
 Estimated weight: 100kg
 USB charging ports: 2
 Wireless charging: 2 units
 LED Strip Light: Warm White/White/RGBW
 Advertising: Led light Box/Led Screen Optional
 Bluetooth speaker: 5/12V
 4G International router

Standard Components Connected Only with NVIDIA AI JETSON

- | | |
|--|---|
| <ul style="list-style-type: none"> • Sensor Alarm • Motion Sensor • Sensor Temperature • Bluetooth Speaker • USB Charger • Wireless Charger • Solar Panel • MPPT Controller • Led Light • Battery • Router • LED SCREEN • GPS | Optional: <ul style="list-style-type: none"> • Sensor CO2, • Smart Voice Speaker • LED SCREEN • Digital Display • AC-DC Power Inverter • Camera • Cooling System • Trash Compactor Control • Desinfection • Network Notice • Voice broadcast • And More..... |
|--|---|



WYC1909B

Standard Components Connected Only with NVIDIA AI JETSON

- | | |
|--|---|
| <ul style="list-style-type: none"> • Sensor Alarm • Motion Sensor • Sensor Temperature • Bluetooth Speaker • USB Charger • Wireless Charger • Solar Panel • MPPT Controller • Led Light • Battery • Router • LED SCREEN • GPS | Optional: <ul style="list-style-type: none"> • Sensor CO2, • Smart Voice Speaker • LED SCREEN • Digital Display • AC-DC Power Inverter • Camera • Cooling System • Trash Compactor Control • Desinfection • Network Notice • Voice broadcast • And More..... |
|--|---|



Material: 201 stainless steel + WPC WOOD
 Dimensions: L-204cm / W: 45cm / H:45cm
 Solar panel: 90W
 Battery capacity: 12V / 55AH
 Controller Type: MPPT
 Estimated weight: 80kg
 USB charging: 2
 Wireless charging: 2 units
 LED Strip light: Warm White/White/RGBW
 Bluetooth speaker: 5/12V
 Wi-Fi: 4G/International router



WYC1916

Standard Components Connected Only with NVIDIA AI JETSON

- | | |
|--|---|
| <ul style="list-style-type: none"> • Sensor Alarm • Motion Sensor • Sensor Temperature • Bluetooth Speaker • USB Charger • Wireless Charger • Solar Panel • MPPT Controller • Led Light • Battery • Router • LED SCREEN • GPS | Optional: <ul style="list-style-type: none"> • Sensor CO2, • Smart Voice Speaker • LED SCREEN • Digital Display • AC-DC Power Inverter • Camera • Cooling System • Trash Compactor Control • Desinfection • Network Notice • Voice broadcast • And More..... |
|--|---|

Material: 201 stainless steel + WPC WOOD
 Dimensions: L: 203cm / W: 68.6cm / H: 309cm
 Solar panel: 135W
 Battery capacity: 12V / 55AH
 Controller type: MPPT
 Estimated weight: 180kg
 USB charging ports: 2
 Wireless charging: 2 units
 LED Spot Light: Warm White/White/RGBW
 Advertising: LED light box / LED display Optional
 Bluetooth speaker: 5/12V
 4G International router





Hybrid System: Solar panel + AC POWER

Material: 201 stainless steel + WPC WOOD

Dimensions: L: 203cm / W: 68.6cm / H: 309cm

Solar panel: 135W

Battery capacity: 12V / 55AH

Controller type: MPPT

Estimated weight: 180kg

USB charging ports: 2

Wireless charging: 2 units

LED Spot Light: Warm White/White/RGBW

Advertising: LED light box / LED display Optional

Charging Scooter: 2

Bluetooth speaker: 5/12V

4G International router

WYC1916A

Standard Components Connected Only with NVIDIA AI JETSON

- | | |
|--|---|
| <ul style="list-style-type: none"> • Sensor Alarm • Motion Sensor • Sensor Temperature • Bluetooth Speaker • USB Charger • Wireless Charger • Solar Panel • MPPT Controller • Led Light • Battery • Router • LED SCREEN • GPS | Optional: <ul style="list-style-type: none"> • Sensor CO2, • Smart Voice Speaker • LED SCREEN • Digital Display • AC-DC Power Inverter • Camera • Cooling System • Trash Compactor Control • Desinfection • Network Notice • Voice broadcast • And More..... |
|--|---|



Material: Stainless steel #201 + WPC wood

Dimensions: L- 203cm, W- 68.6cm, H- 309cm

Solar panel: 135W + AC power

Battery capacity: 12V, 55AH

Controller Type: MPPT

Weight: estimated 180kg

USB charging: 2

Wireless charging: 2

Ambient light: LED light

Advertising display: 43" LCD screen back, 2000lm

Bluetooth speaker: 5/12V

Wi-Fi: 4G/International router

WYC1916C

Standard Components Connected Only with NVIDIA AI JETSON

- | | |
|--|---|
| <ul style="list-style-type: none"> • Sensor Alarm • Motion Sensor • Sensor Temperature • Bluetooth Speaker • USB Charger • Wireless Charger • Solar Panel • MPPT Controller • Led Light • Battery • Router • LED SCREEN • GPS | Optional: <ul style="list-style-type: none"> • Sensor CO2, • Smart Voice Speaker • LED SCREEN • Digital Display • AC-DC Power Inverter • Camera • Cooling System • Trash Compactor Control • Desinfection • Network Notice • Voice broadcast • And More..... |
|--|---|



WYC1916B

Standard Components Connected Only with NVIDIA AI JETSON

- | | |
|--|---|
| <ul style="list-style-type: none"> • Sensor Alarm • Motion Sensor • Sensor Temperature • Bluetooth Speaker • USB Charger • Wireless Charger • Solar Panel • MPPT Controller • Led Light • Battery • Router • LED SCREEN • GPS | Optional: <ul style="list-style-type: none"> • Sensor CO2, • Smart Voice Speaker • LED SCREEN • Digital Display • AC-DC Power Inverter • Camera • Cooling System • Trash Compactor Control • Desinfection • Network Notice • Voice broadcast • And More..... |
|--|---|



Material: 201 stainless steel + WPC wood

Dimensions: L- 223cm, W- 55cm, H- 247.2cm

Solar Panel: 90W

Battery capacity: 12V / 55AH

Controller Type: MPPT

Weight: estimated 180kg

USB charging: 4

Wireless charging: 2

Ambient light: LED spot light

Advertising display: LED light box and monochrome

LED display screen optional

Bluetooth speaker: 5/12V

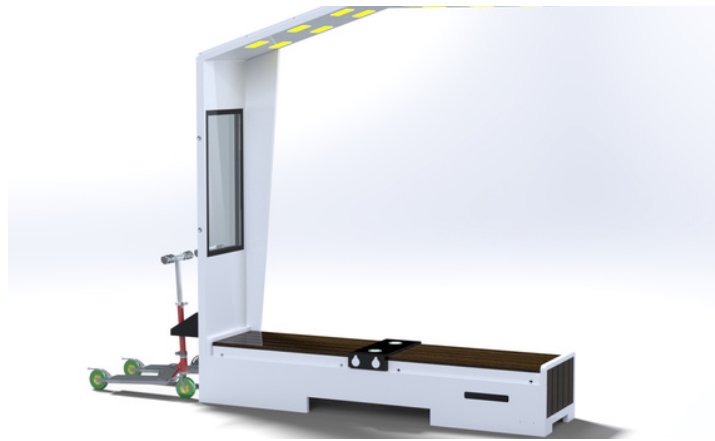
Wi-Fi: 4G/International router

WYC1917

Standard Components Connected Only with NVIDIA AI JETSON

- | | |
|--|---|
| <ul style="list-style-type: none"> • Sensor Alarm • Motion Sensor • Sensor Temperature • Bluetooth Speaker • USB Charger • Wireless Charger • Solar Panel • MPPT Controller • Led Light • Battery • Router • LED SCREEN • GPS | Optional: <ul style="list-style-type: none"> • Sensor CO2, • Smart Voice Speaker • LED SCREEN • Digital Display • AC-DC Power Inverter • Camera • Cooling System • Trash Compactor Control • Desinfection • Network Notice • Voice broadcast • And More..... |
|--|---|





Material: 201 stainless steel + WPC WOOD

Dimensions: L: 223cm / W: 55cm / H: 247.2cm

Solar panel: 90W

Battery capacity: 12V / 55AH

Controller type: MPPT

Estimated weight: 180kg

USB charging ports: 4

Wireless charging: 2 units

LED Spot Light: Warm White/White/RGBW

Advertising: 2 LED light box / LED display Optional

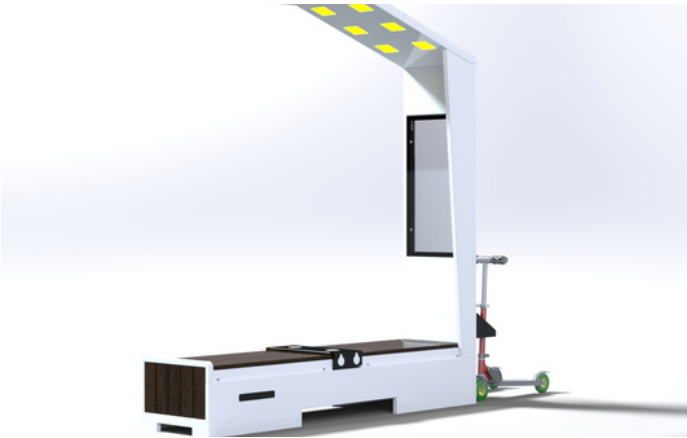
Bluetooth speaker: 5/12V

4G International router

WYC1917B

Standard Components Connected Only with NVIDIA AI JETSON

- | | |
|--|--|
| <ul style="list-style-type: none"> • Sensor Alarm • Motion Sensor • Sensor Temperature • Bluetooth Speaker • USB Charger • Wireless Charger • Solar Panel • MPPT Controller • Led Light • Battery • Router • LED SCREEN • GPS | <p>Optional:</p> <ul style="list-style-type: none"> • Sensor CO2, • Smart Voice Speaker • LED SCREEN • Digital Display • AC-DC Power Inverter • Camera • Cooling System • Trash Compactor Control • Desinfection • Network Notice • Voice broadcast • And More..... |
|--|--|



Material: 201 stainless steel + WPC WOOD

Dimensions: L: 203cm / W: 68.6cm / H: 250cm

Solar panel: 200W

Battery capacity: 12V / 55AH

Controller type: MPPT

Estimated weight: 190kg

USB charging ports: 4

Wireless charging: 2 units

LED Spot Light: Warm White/White/RGBW

Advertising: 1 LED light box / LED display Optional

Bluetooth speaker: 5/12V

4G International router

WYC1919

Standard Components Connected Only with NVIDIA AI JETSON

- | | |
|--|--|
| <ul style="list-style-type: none"> • Sensor Alarm • Motion Sensor • Sensor Temperature • Bluetooth Speaker • USB Charger • Wireless Charger • Solar Panel • MPPT Controller • Led Light • Battery • Router • LED SCREEN • GPS | <p>Optional:</p> <ul style="list-style-type: none"> • Sensor CO2, • Smart Voice Speaker • LED SCREEN • Digital Display • AC-DC Power Inverter • Camera • Cooling System • Trash Compactor Control • Desinfection • Network Notice • Voice broadcast • And More..... |
|--|--|



Material: 201 stainless steel + imitation wood paint

Dimensions: L- 210cm, W- 50cm, H- 45/240cm

Solar Panel: 90W

Battery capacity: 12V / 55AH

Controller Type: MPPT

Weight: estimated 60kg

USB charging: 2

Wireless charging: 2

Ambient light: LED strip RGBW/Warm White

Bluetooth speaker: 5/12V

Wi-Fi: 4G/International router

Battery remaining capacity display

WYC1918

Standard Components Connected Only with NVIDIA AI JETSON

- | | |
|--|--|
| <ul style="list-style-type: none"> • Sensor Alarm • Motion Sensor • Sensor Temperature • Bluetooth Speaker • USB Charger • Wireless Charger • Solar Panel • MPPT Controller • Led Light • Battery • Router • LED SCREEN • GPS | <p>Optional:</p> <ul style="list-style-type: none"> • Sensor CO2, • Smart Voice Speaker • LED SCREEN • Digital Display • AC-DC Power Inverter • Camera • Cooling System • Trash Compactor Control • Desinfection • Network Notice • Voice broadcast • And More..... |
|--|--|



Material: 201 stainless steel + WPC WOOD

Dimensions: L: 200cm / W: 58cm / H: 220cm

Solar panel: 100W

Battery capacity: 12V / 55AH

Controller type: MPPT

Estimated weight: 190kg

USB charging ports: 4

Wireless charging: 2 units

LED Spot Light: Warm White/White/RGBW

Advertising: LED light box Optional / LED display Optional

Bluetooth speaker: 5/12V

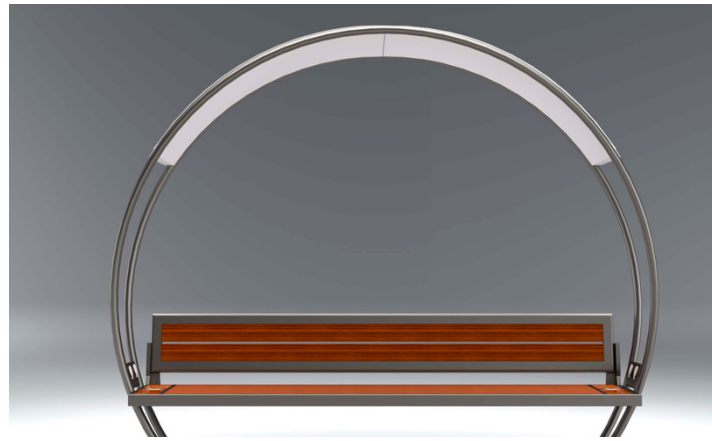
4G International router

WYC1920

Standard Components Connected Only with NVIDIA AI JETSON

- | | |
|--|--|
| <ul style="list-style-type: none"> • Sensor Alarm • Motion Sensor • Sensor Temperature • Bluetooth Speaker • USB Charger • Wireless Charger • Solar Panel • MPPT Controller • Led Light • Battery • Router • LED SCREEN • GPS | <p>Optional:</p> <ul style="list-style-type: none"> • Sensor CO2, • Smart Voice Speaker • LED SCREEN • Digital Display • AC-DC Power Inverter • Camera • Cooling System • Trash Compactor Control • Desinfection • Network Notice • Voice broadcast • And More..... |
|--|--|



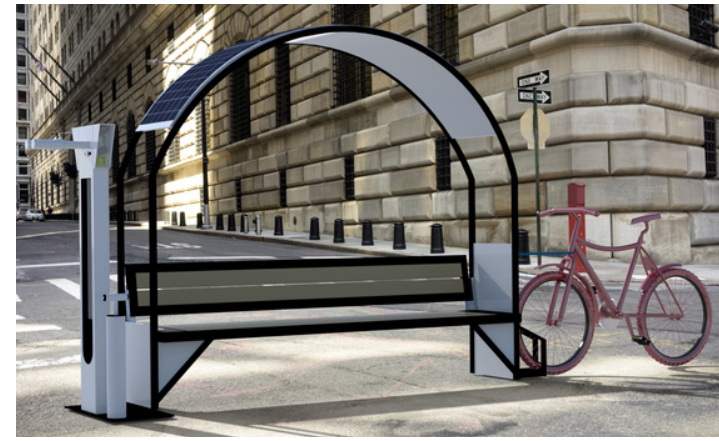


Material: 304 stainless steel + WPC WOOD
Dimensions: L: 241cm / W: 69cm / H: 45/84/216cm
Solar panel: 160W
Battery capacity: 12V / 55AH
Controller type: MPPT
Estimated weight: 130kg
USB charging ports: 3
Wireless charging: 2 units
LED Strip Light: Warm White/White/RGBW
Bluetooth speaker: 5/12V
4G International router

WYC1926

Standard Components Connected Only with NVIDIA AI JETSON

- | | |
|--|---|
| <ul style="list-style-type: none"> • Sensor Alarm • Motion Sensor • Sensor Temperature • Bluetooth Speaker • USB Charger • Wireless Charger • Solar Panel • MPPT Controller • Led Light • Battery • Router • LED SCREEN • GPS | Optional: <ul style="list-style-type: none"> • Sensor CO2, • Smart Voice Speaker • LED SCREEN • Digital Display • AC-DC Power Inverter • Camera • Cooling System • Trash Compactor Control • Desinfection • Network Notice • Voice broadcast • And More..... |
|--|---|

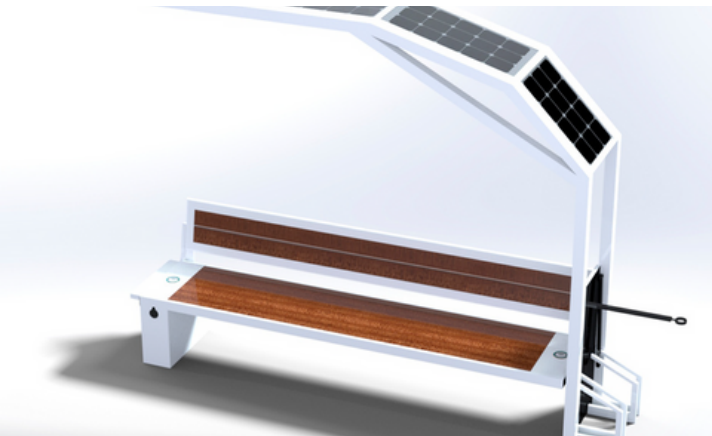


Material: 304 stainless steel + WPC WOOD
Dimensions: L: 241cm / W: 69cm / H: 45/84/216cm
Solar panel: 162W
Battery capacity: 12V / 55AH*2
Controller type: MPPT
Estimated weight: 160kg
Electric bike charging sockets / Bike Racks / Air Pump
USB charging ports: 3
Wireless charging: 2 units
LED Strip Light: Warm White/White/RGBW
Bluetooth speaker: 5/12V
4G International router

WYC1928

Standard Components Connected Only with NVIDIA AI JETSON

- | | |
|--|---|
| <ul style="list-style-type: none"> • Sensor Alarm • Motion Sensor • Sensor Temperature • Bluetooth Speaker • USB Charger • Wireless Charger • Solar Panel • MPPT Controller • Led Light • Battery • Router • LED SCREEN • GPS | Optional: <ul style="list-style-type: none"> • Sensor CO2, • Smart Voice Speaker • LED SCREEN • Digital Display • AC-DC Power Inverter • Camera • Cooling System • Trash Compactor Control • Desinfection • Network Notice • Voice broadcast • And More..... |
|--|---|

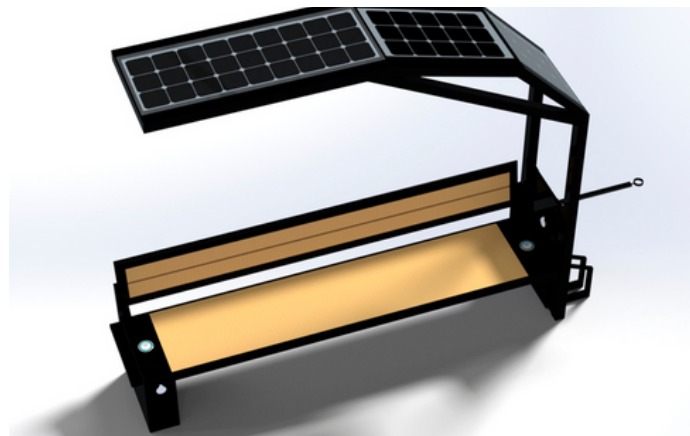


Material: 304 stainless steel + WPC WOOD
Dimensions: L: 220cm / W: 53cm / H: 45/73/230cm
Solar panel: 160W
Battery capacity: 12V / 85AH
Controller type: MPPT
Estimated weight: 130kg
USB charging ports: 3
Wireless charging: 2 units
LED Strip Light: Warm White/White/RGBW
Bluetooth speaker: 5/12V
4G International router

WYC1927

Standard Components Connected Only with NVIDIA AI JETSON

- | | |
|--|---|
| <ul style="list-style-type: none"> • Sensor Alarm • Motion Sensor • Sensor Temperature • Bluetooth Speaker • USB Charger • Wireless Charger • Solar Panel • MPPT Controller • Led Light • Battery • Router • LED SCREEN • GPS | Optional: <ul style="list-style-type: none"> • Sensor CO2, • Smart Voice Speaker • LED SCREEN • Digital Display • AC-DC Power Inverter • Camera • Cooling System • Trash Compactor Control • Desinfection • Network Notice • Voice broadcast • And More..... |
|--|---|



Material: 201 stainless steel + WPC WOOD
Dimensions: L: 218cm / W: 45cm / H: 46/88/220cm
Solar panel: 144W
Battery capacity: 12V / 55AH
Controller type: MPPT
Estimated weight: 180kg
USB charging ports: 2
Wireless charging: 2 units
LED Strip Light: Warm White/White/RGBW
Bluetooth speaker: 5/12V
4G International router

WYC2021

Standard Components Connected Only with NVIDIA AI JETSON

- | | |
|--|---|
| <ul style="list-style-type: none"> • Sensor Alarm • Motion Sensor • Sensor Temperature • Bluetooth Speaker • USB Charger • Wireless Charger • Solar Panel • MPPT Controller • Led Light • Battery • Router • LED SCREEN • GPS | Optional: <ul style="list-style-type: none"> • Sensor CO2, • Smart Voice Speaker • LED SCREEN • Digital Display • AC-DC Power Inverter • Camera • Cooling System • Trash Compactor Control • Desinfection • Network Notice • Voice broadcast • And More..... |
|--|---|





Material: Stainless steel #201 + WPC wood
Dimensions: L- 218cm, W- 45cm, H- 220cm
Solar Panel: 135W
Battery capacity: 12V, 55AH
Controller Type: MPPT
Weight: estimated 180kg
USB charger: 2pcs
Wireless charger: 2pcs
LED light: top light + embient strip light
Advertising LED light box *1 windows
Bluetooth speaker: 5/12V
Wi-Fi: 4G/International router
P2.5 LED screen on the back, supported by AC HYBRID SYSTEM

WYC2021A

Standard Components Connected Only with NVIDIA AI JETSON

- | | |
|--|---|
| <ul style="list-style-type: none"> • Sensor Alarm • Motion Sensor • Sensor Temperature • Bluetooth Speaker • USB Charger • Wireless Charger • Solar Panel • MPPT Controller • Led Light • Battery • Router • LED SCREEN • GPS | Optional: <ul style="list-style-type: none"> • Sensor CO2, • Smart Voice Speaker • LED SCREEN • Digital Display • AC-DC Power Inverter • Camera • Cooling System • Trash Compactor Control • Desinfection • Network Notice • Voice broadcast • And More..... |
|--|---|



Material: Stainless steel #201 + WPC wood
Dimensions: 170*45*45cm
Solar Panel: 33W
Battery capacity: 12V, 20AH
Controller Type: MPPT
Estimated weight: 45kg
USB charging ports: 2 Units
Wireless charger: 2
Lighting: No
Bluetooth speaker: 5v/12v
Wi-Fi: No

WYC2101

Standard Components Connected Only with NVIDIA AI JETSON

- | | |
|--|---|
| <ul style="list-style-type: none"> • Sensor Alarm • Motion Sensor • Sensor Temperature • Bluetooth Speaker • USB Charger • Wireless Charger • Solar Panel • MPPT Controller • Led Light • Battery • Router • LED SCREEN • GPS | Optional: <ul style="list-style-type: none"> • Sensor CO2, • Smart Voice Speaker • LED SCREEN • Digital Display • AC-DC Power Inverter • Camera • Cooling System • Trash Compactor Control • Desinfection • Network Notice • Voice broadcast • And More..... |
|--|---|

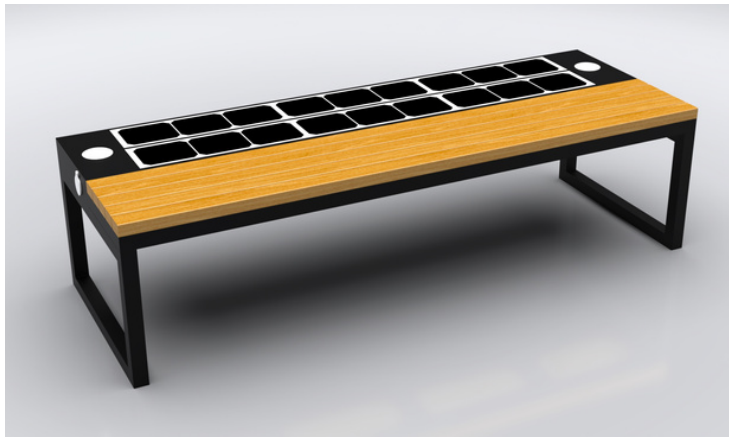
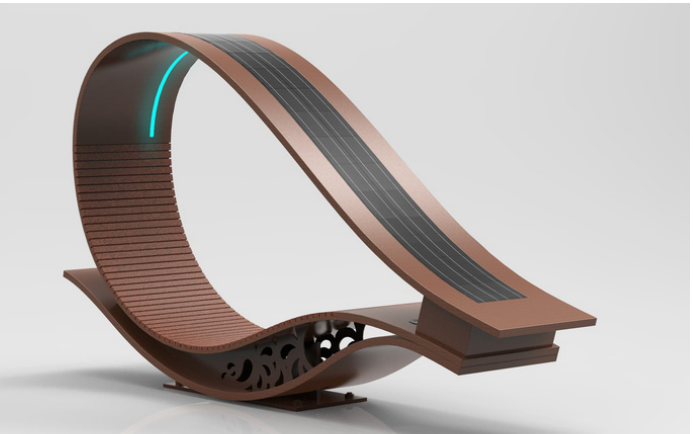


Material: 201 stainless steel
Dimensions: L-263cm / W: 47cm / H:152cm
Solar panel: 90W
Battery capacity: 12V / 55AH
Controller Type: MPPT
Estimated weight: 90kg
USB charging: 2
Wireless charging: 2 units
LED Strip light: Warm White/White/RGBW
Bluetooth speaker: 5/12V
Wi-Fi: 4G/International router

WYC2022

Standard Components Connected Only with NVIDIA AI JETSON

- | | |
|--|---|
| <ul style="list-style-type: none"> • Sensor Alarm • Motion Sensor • Sensor Temperature • Bluetooth Speaker • USB Charger • Wireless Charger • Solar Panel • MPPT Controller • Led Light • Battery • Router • LED SCREEN • GPS | Optional: <ul style="list-style-type: none"> • Sensor CO2, • Smart Voice Speaker • LED SCREEN • Digital Display • AC-DC Power Inverter • Camera • Cooling System • Trash Compactor Control • Desinfection • Network Notice • Voice broadcast • And More..... |
|--|---|



Material: Stainless steel #201 + WPC wood
Dimensions: 170*60*45cm
Solar Panel: 66W
Battery capacity: 12V, 30AH
Controller Type: MPPT
Estimated weight: 45kg
USB charging ports: 2 Units
Wireless charger: 2
LED Strip light: Warm White/White/RGBW
Bluetooth speaker: 5v/12v
Wi-Fi: No

WYC2101A

Standard Components Connected Only with NVIDIA AI JETSON

- | | |
|--|---|
| <ul style="list-style-type: none"> • Sensor Alarm • Motion Sensor • Sensor Temperature • Bluetooth Speaker • USB Charger • Wireless Charger • Solar Panel • MPPT Controller • Led Light • Battery • Router • LED SCREEN • GPS | Optional: <ul style="list-style-type: none"> • Sensor CO2, • Smart Voice Speaker • LED SCREEN • Digital Display • AC-DC Power Inverter • Camera • Cooling System • Trash Compactor Control • Desinfection • Network Notice • Voice broadcast • And More..... |
|--|---|





Material: Stainless steel #201 + WPC wood

Dimensions: 200*60*45cm

Solar Panel: 66W

Battery capacity: 12V, 30AH

Controller Type: MPPT

Estimated weight: 60kg

USB charging: 2

Wireless charging: 2 units

LED Strip light: Warm White/White/RGBW

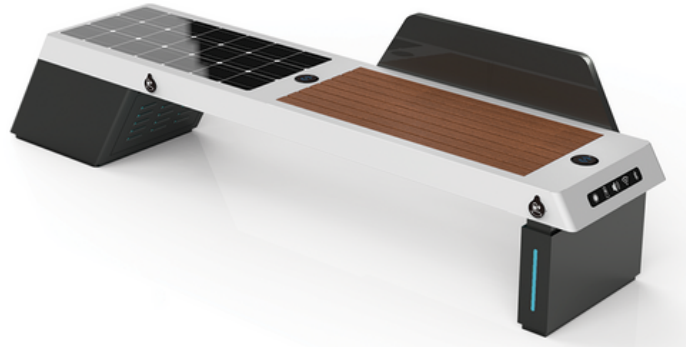
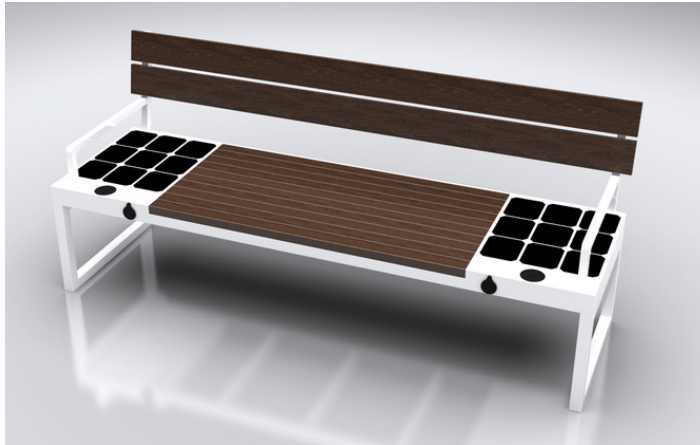
Bluetooth speaker: 5/12V

Wi-Fi: No

WYC2101B

Standard Components Connected Only with NVIDIA AI JETSON

- | | |
|--|--|
| <ul style="list-style-type: none">• Sensor Alarm• Motion Sensor• Sensor Temperature• Bluetooth Speaker• USB Charger• Wireless Charger• Solar Panel• MPPT Controller• Led Light• Battery• Router• LED SCREEN• GPS | Optional: <ul style="list-style-type: none">• Sensor CO2,• Smart Voice Speaker• LED SCREEN• Digital Display• AC-DC Power Inverter• Camera• Cooling System• Trash Compactor Control• Desinfection• Network Notice• Voice broadcast• And More..... |
|--|--|



Material: 201 stainless steel + WPC WOOD

Dimensions: L: 246cm / W: 54.7cm / H: 65cm

Solar panel: 63W

Battery capacity: 12V / 55AH

Controller type: MPPT

Estimated weight: 90kg

USB charging ports: 2

Wireless charging: 2 units

LED Strip Light: Warm White/White/RGBW

Advertising: Led light Box/Led Screen Optional

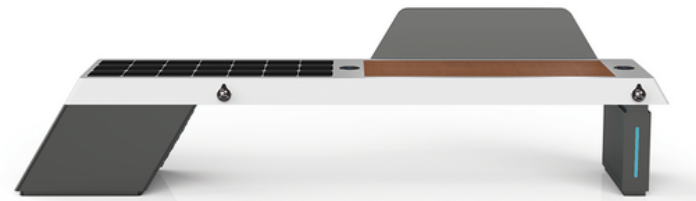
Bluetooth speaker: 5/12V

4G International router

WYC2109A

Standard Components Connected Only with NVIDIA AI JETSON

- | | |
|--|--|
| <ul style="list-style-type: none">• Sensor Alarm• Motion Sensor• Sensor Temperature• Bluetooth Speaker• USB Charger• Wireless Charger• Solar Panel• MPPT Controller• Led Light• Battery• Router• LED SCREEN• GPS | Optional: <ul style="list-style-type: none">• Sensor CO2,• Smart Voice Speaker• LED SCREEN• Digital Display• AC-DC Power Inverter• Camera• Cooling System• Trash Compactor Control• Desinfection• Network Notice• Voice broadcast• And More..... |
|--|--|



Material: 201 stainless steel + WPC WOOD

Dimensions: L: 246cm / W: 54.7cm / H: 65cm

Solar panel: 99W

Battery capacity: 12V / 55AH

Controller type: MPPT

Estimated weight: 90kg

USB charging ports: 2

Wireless charging: 2 units

LED Strip Light: Warm White/White/RGBW

Advertising: Led light Box/Led Screen Optional

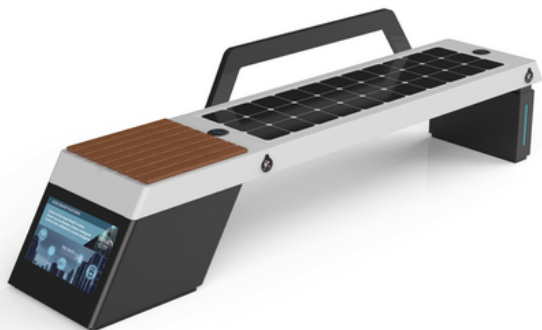
Bluetooth speaker: 5/12V

4G International router

WYC2109

Standard Components Connected Only with NVIDIA AI JETSON

- | | |
|--|--|
| <ul style="list-style-type: none">• Sensor Alarm• Motion Sensor• Sensor Temperature• Bluetooth Speaker• USB Charger• Wireless Charger• Solar Panel• MPPT Controller• Led Light• Battery• Router• LED SCREEN• GPS | Optional: <ul style="list-style-type: none">• Sensor CO2,• Smart Voice Speaker• LED SCREEN• Digital Display• AC-DC Power Inverter• Camera• Cooling System• Trash Compactor Control• Desinfection• Network Notice• Voice broadcast• And More..... |
|--|--|



Material: Stainless steel #201 + WPC wood

Dimensions: 200*60*45cm

Solar Panel: 66W

Battery capacity: 12V, 30AH

Controller Type: MPPT

Estimated weight: 60kg

USB charging: 2

Wireless charging: 2 units

LED Strip light: Warm White/White/RGBW

Bluetooth speaker: 5/12V

Wi-Fi: No

WYC2204

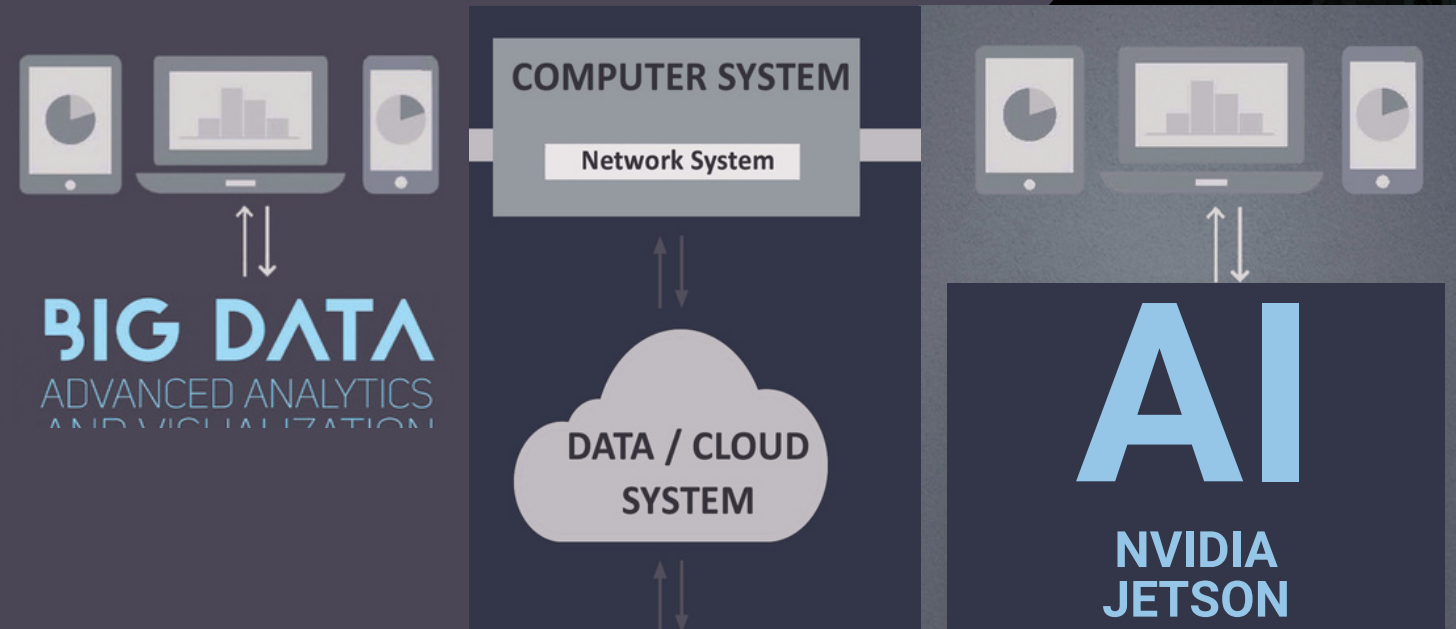
Standard Components Connected Only with NVIDIA AI JETSON

- | | |
|--|--|
| <ul style="list-style-type: none">• Sensor Alarm• Motion Sensor• Sensor Temperature• Bluetooth Speaker• USB Charger• Wireless Charger• Solar Panel• MPPT Controller• Led Light• Battery• Router• LED SCREEN• GPS | Optional: <ul style="list-style-type: none">• Sensor CO2,• Smart Voice Speaker• LED SCREEN• Digital Display• AC-DC Power Inverter• Camera• Cooling System• Trash Compactor Control• Desinfection• Network Notice• Voice broadcast• And More..... |
|--|--|



SMART CITY INTEGRATED MANAGEMENT SYSTEM

SMART CITY - AI



Components Connected with NVIDIA AI JETSON

Our Standard Platform

- Sensor Alarm
- Motion Sensor
- Sensor Temperature
- Bluetooth Speaker
- USB Charger
- Wireless Charger
- Solar Panel
- MPPT Controller
- Led Light / Intensity - ON/OFF
- Timing Schedule
- Battery
- Router
- LED SCREEN
- GPS

Components Connected with NVIDIA AI JETSON

Optional:

- Sensor CO2
- Sensor Waterproof
- Sensor Humidity
- Sensor Wind Speed
- Sensor Wind Direction
- Sensor Atmospheric Pressure
- Sensor Noise
- Sensor Filled Alarm
- Sensor PM10 - PM2.5
- Sensor Bin Automatic Door
- Sensor Bin Capacity
- Sensor + Laser People Counters
- Trash Compactor Control
- Desinfection
- Network Notice
- Smart Voice
- Voice broadcast
- Digital Display
- AC-DC Power Inverter
- Camera
- Cooling System

ADLIS SMART CITY INTEGRATED MANAGEMENT SYSTEM

ADLIS CLOUD PLATFORM

Each of our products can be configured with different options. With our Hardware-Software combined with NVIDIA AI JETSON BOX allows us all possible options for total Smart City

BASIC PLATFORM

Licences Prices Month
Prices Cloud Month
1 to 200 JETSON BOX Connected

PREMIUM PLATFORM

Licences Prices Month
Prices Cloud Month
200 to 1000 JETSON BOX Connected

FULL PLATFORM

Licences Prices Year
Special Cloud Prices
Full JETSON BOX Connected

ADLIS HOSTING SERVER

Each NVIDIA AI JETSON BOX connected to our products is configured separately. We configure the JETSON BOX with a different protocol for each product. The configuration has an additional cost that is paid once. The cost depend on the configuration and components.

BASIC PLATFORM

Server Prices Year
Adlissmart Domain
www.adlissmart.com-Name
1 to 200 JETSON BOX Connected

PREMIUM PLATFORM

Server Prices Year
Adlissmart SubDomain
www.Name/adlissmart.com
1 to 200 JETSON BOX Connected

FULL PLATFORM

Server Prices Year
Private Domain
www.DomainName.com
Full JETSON BOX Connected

ADLIS SMART DATA

We manufacture the chosen Model and connect one NVIDIA AI JETSON BOX. We configure the JETSON BOX with our platform with unique protocol. Unique link for each Distributor and Client to control our platform and manage the data of each component.

BASIC PLATFORM

Standard Data Smart Components
Extra cost for more Components

PREMIUM PLATFORM

Standard Data Smart Components
Extra cost for more Components

FULL PLATFORM

Extra Data Smart Components
Extra cost for Special Components

- Our Platform is configured with the standard components in all our models.
- Standard components connected to an NVIDIA AI Jetson Box to be able to control all Standard components and manage data.
- Each Jetson Box has an extra cost: **MODEL + JETSON BOX + Platform Plan**
- To receive information about our standard components list and prices for Basic/Premium/Full Platform contact: mori@adlissmart.com / Office@OpTeamizer.co.il

For more information about our AI NEW GEN Platform contact:

mori@adlissmart.com

Office@OpTeamizer.co.il

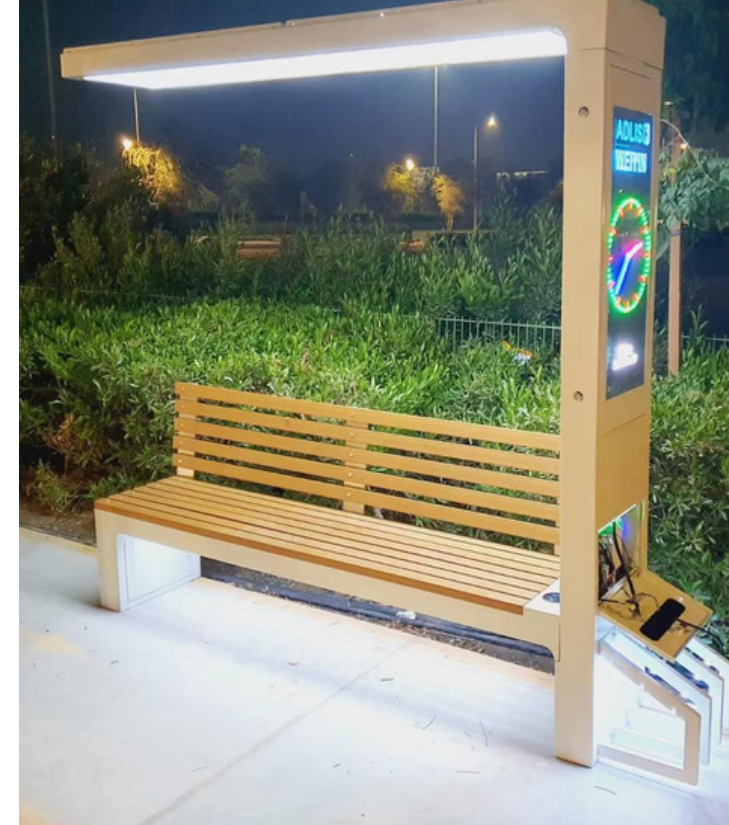
The concept in the new technology is the future.

Simplicity of communication, Individual solutions for customers.

Our concepts reflect our imagination and common sense.

We provide a wide range of services, Design 3D/AR/VR/CAD...

We create all the ideas, manufacturing our and your products



Solar/No Solar Smart Street Furniture

All our products can be customized to the client's request.

- Paint Colors
- USB
- wireless
- Wood color
- Router
- Advertising

And much more.

We can change the standard measurements of our products but it will have an extra cost for the artwork engineer.



NEXT GEN OF ADLIS INTEGRATED SYSTEM POWERED BY NVIDIA JETSON



Chief Business Development

Jane Wu

sales@solarbenchchina.com

0086 13823126631