



# WYC1908D

CATALOGUE

[www.adlissmart.com](http://www.adlissmart.com)

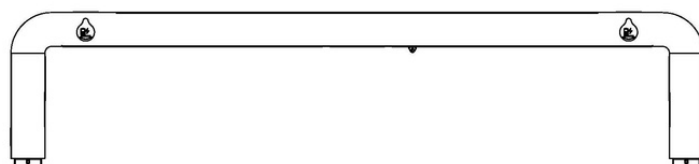
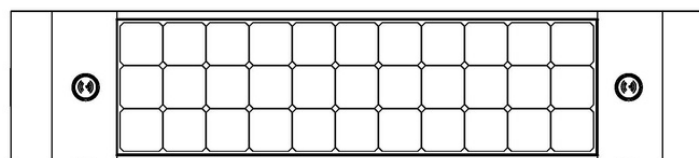
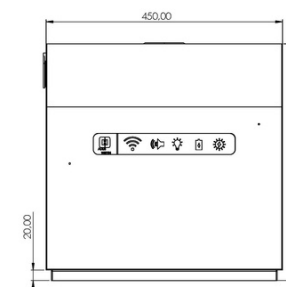
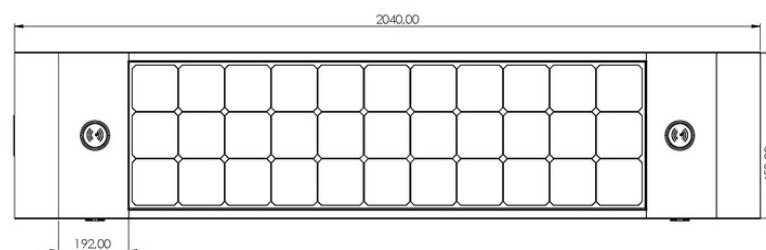
# DESCRIPTION

Solar Smart Bench is made of corten steel  
Stainless Steel #201

**Option Stainless Steel #304 / #316**

Solar Panel: 90W

WIFI Router 4G



## WYC1908D

Smart Solar Bench  
Bench is made of corten steel  
Stainless Steel #201  
Thickness 2-4 mm

[www.adlissmart.com](http://www.adlissmart.com)

# FINISHES

Plexus box - 1055 2P USB 5V 2.1A)

Stainless Steel #201 or #304

Thermo lacquered in choice of RAL

Dimensions: L 200mm x 500mm x H 460mm - WEIGHT: 80Kg

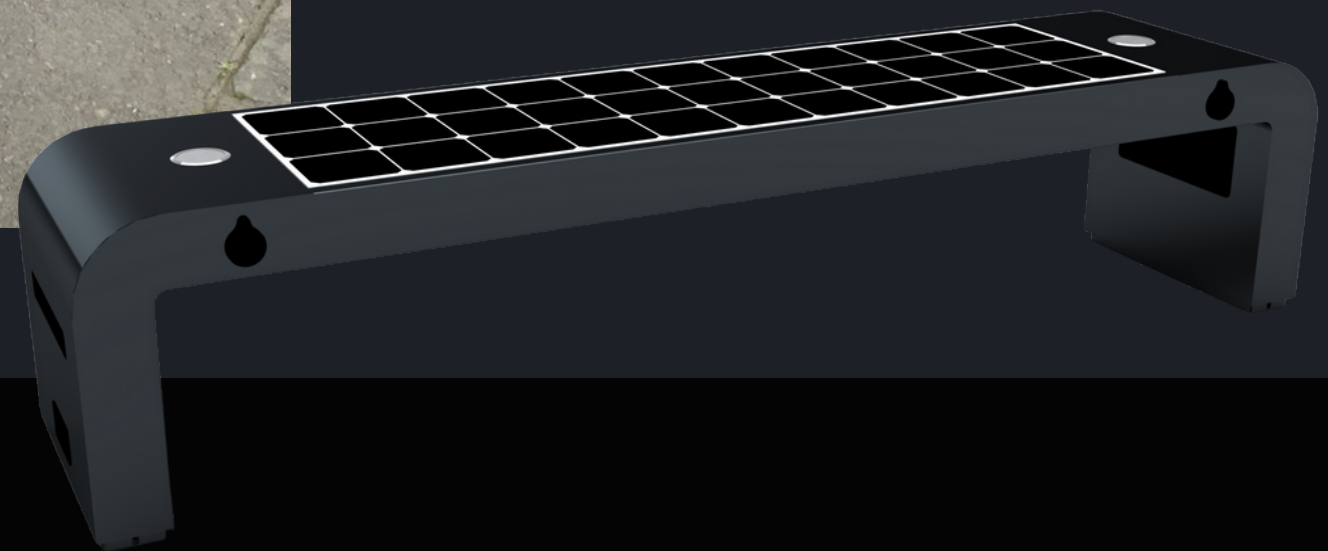






## ADLIS SMART

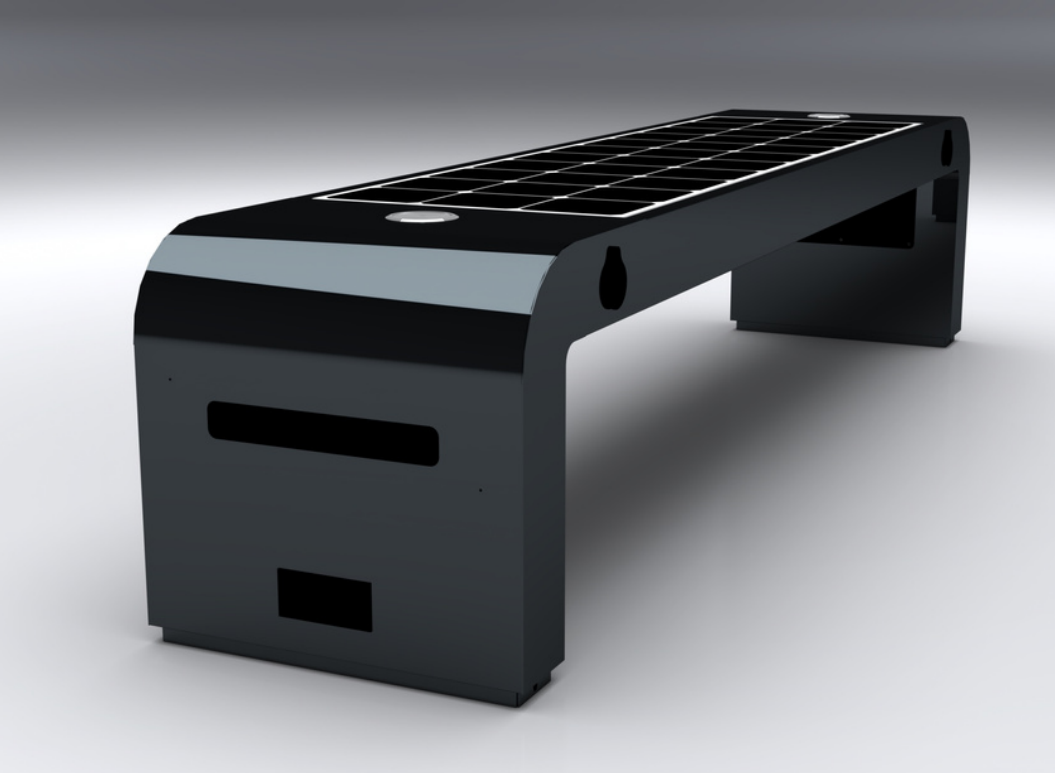
The importance of always creating something new, designing new concepts allows Adlis Smart to remain a leader in the production of Smart Street Furniture.



## OUR MODEL, OUR IDEA

WYC1908D is part of our Solar Smart Bench collection, a simple design that fits anywhere. Comfortable, personalized, it comes with all the necessary components to facilitate any communication and information.

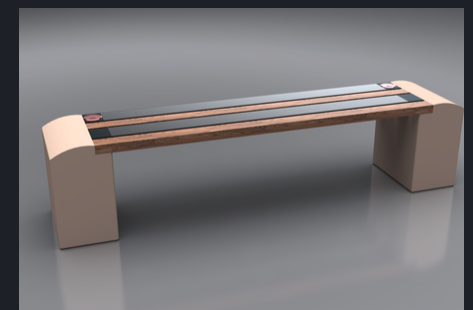




WYC1908D offers several options to choose from. possibility of changing measurements, increasing the power of the solar panel and others.

WYC1908D for assembly offers other options such as smart voice, digital display with hybrid system, SOS system and our Platform Smart City AI management system.

WYC1908D is our collection of Solar Smart Bench. Made of #201/#304 stainless steel, we offer standard system and standard system + options (Smart City AI Platform). Includes solar panel, battery, MPPT controller, WIFI, Spot Led Light, charger and others. We offer digital screen options with hybrid system, indoor options without solar panels, Smart Voice and much more. Ground anchoring device and steel casing - resistance to vandalism.



# WYC1908D

Material: Stainless steel #201

Dimensions: L- 200cm, W- 50cm, H- 46cm

Solar Panel: 90W

Battery capacity: 12V, 55AH

Controller Type: MPPT

Weight: estimated 80kg

USB charging: 2

Power (per port): 5V (2.1A)

Wireless charging: 2

Ambient light: LED strip RGBW/Warm white

Bluetooth speaker: 5/12V

Wi-Fi: 4G international router

## Optional

Platform Adlis Smart City AI Management System

Smart Voice

Smart camera

SOS button

Sensors (CO2, Noise, waterproof, Temperature etc....)

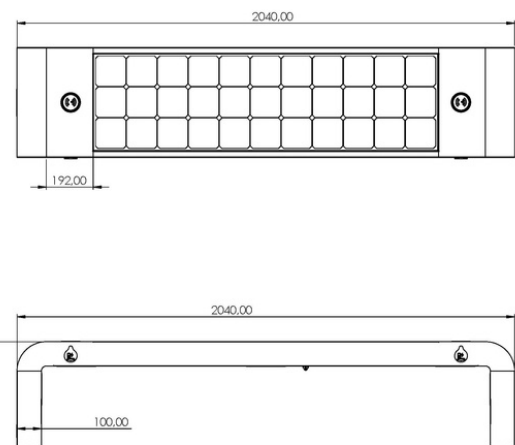
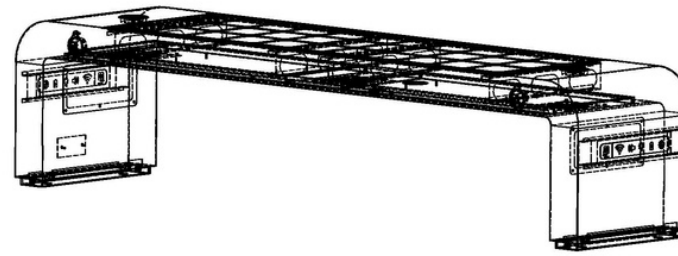
Digital Display/Led Screen for advertising

Hybrid system: solar + electricity

Can be upgraded and customized for specific applications

Custom colors available

Vandal resistant



## ADLIS/WEIYIN CORPORATION

Visit our website for product details, color charts, technical data sheet, sales office locations, download images, designs, brochure...

WYC1908D Design: Adlis Smart

WYC1908D is manufactured in Europ and China

Specifications are subject to change without notice.

3D Design / Artwork for the 21st century

2020 Adlis/Weiyin Corporation

2/F, Building E, Hengchangrong Industrial Park.  
Pinghu Street, Longgang District, Shenzhen City,  
Guangdong Province, China





# ADLIS SMART

TO REINVENT THE FUTURE,  
WE MUST ALL WORK TOGETHER.

[www.adlissmart.com](http://www.adlissmart.com)

